

FLOOD WATERS OVER CENTRAL SAGAING REGION, MYANMAR

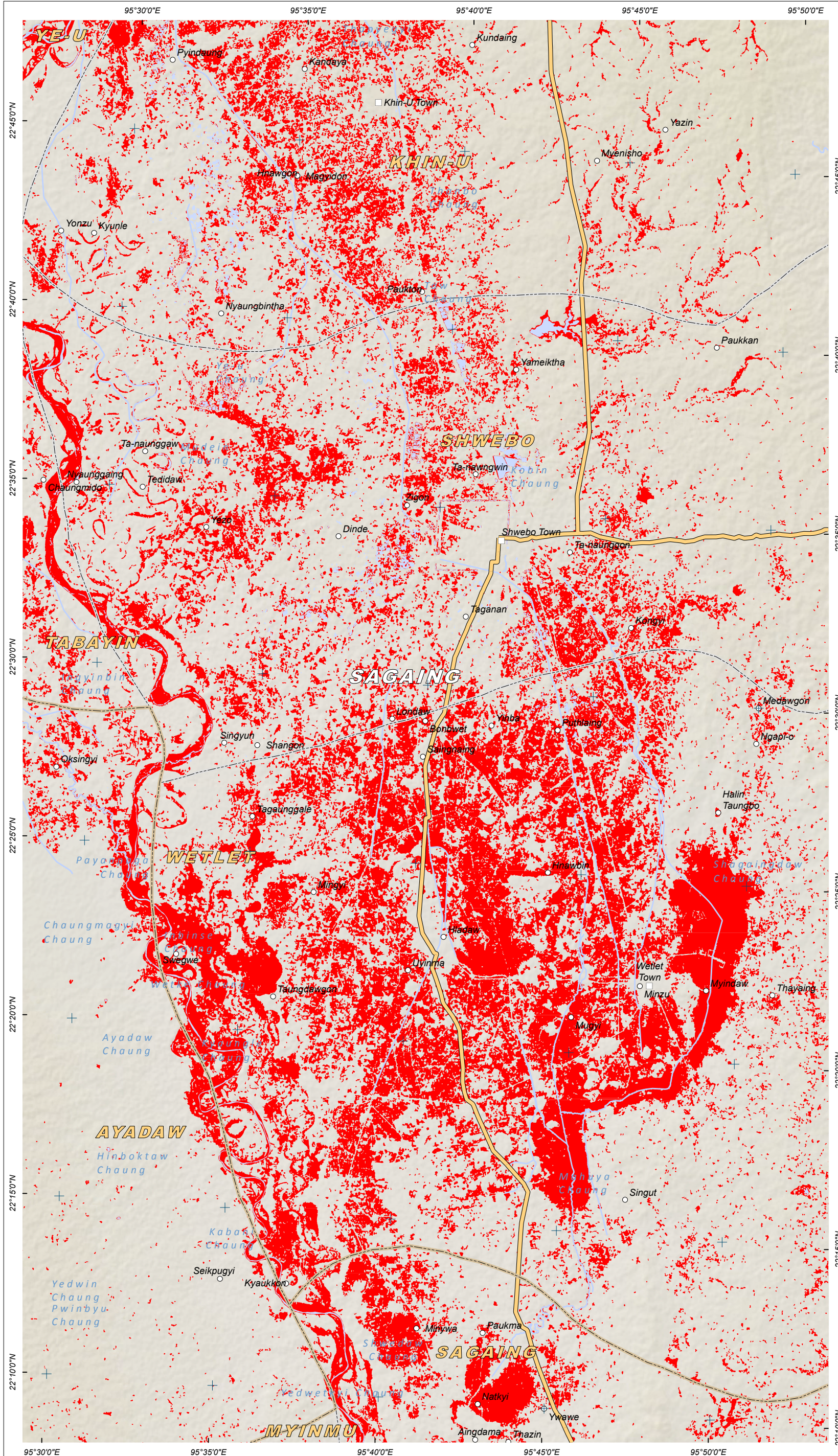
Analysis with Sentinel-1 Satellite Data Acquired 11 August 2015 and 20 March 2015

Flooding

Production Date:
13/08/2015

Version 1.0

Glide Number:
FL-2015-000089-MMR



This map illustrates satellite-detected flood waters in the central part of Sagaing region in the areas of Shwebo, Wetlet and Khin-U townships of Myanmar as imaged by the Sentinel-1 satellite on 11 August 2015. Waters along the Mu River have expanded and inundated lands on either sides of the river bank. Floods affected lands increased on the left bank of the Mu River (downstream). Total surface area covered with water in the analysed area has increased from a pre-flood level of 1% to 7% during the flood period, and as of 11 August 2015 a total of ~250,000 ha of lands were affected. This is a preliminary analysis and has not yet been validated in the field. Please send ground feedback to UNITAR-UNOSAT.

LEGEND

- City/Town
- Village
- Airport
- Highway/Primary Road
- State Boundary
- Township Boundary

FLOOD WATER EXTENT ANALYSIS (Satellite-Based Classification)

- Probable Standing Flood Waters: [Sentinel-1 - 11 August 2015]
- Pre-Crisis Water Extent: [Sentinel-1 - 20 March 2015]

Map Scale for A3: 1:200,000
0 1 2 3 4 5 6 Km

Satellite Data (1): Sentinel-1
Imagery Dates: 11 August 2015
Resolution: 10 m
Copyright: Copernicus 2014 / ESA
Source: Sentinel-1 Scientific Data Hub
Satellite Data (2): Sentinel-1
Imagery Dates: 20 March 2015
Resolution: 10 m
Copyright: Copernicus 2014 / ESA
Source: Sentinel-1 Scientific Data Hub
Road Data: OpenStreetMap
Other Data: USGS, UNCS, NASA, NGA, MIMU, COD
Analysis: UNITAR - UNOSAT
Production: UNITAR - UNOSAT
Analysis conducted with ArcGIS v10.3

Coordinate System: WGS 1984 UTM Zone 46N
Projection: Transverse Mercator
Datum: WGS 1984
Units: Meter

The depiction and use of boundaries, geographic names and related data shown here are not warranted to be error-free nor do they imply official endorsement or acceptance by the United Nations. UNOSAT is a program of the United Nations Institute for Training and Research (UNITAR), providing satellite imagery and related geographic information, research and analysis to UN humanitarian and development agencies and their implementing partners. This work by UNITAR/UNOSAT is licensed under a Creative Commons Attribution-NonCommercial-ShareAlike 3.0 Unported License.

Disaster coverage by the International Charter 'Space and Major Disasters'. For more information on the Charter, which is about assisting the disaster relief organizations with multi-satellite data and information, visit www.disasterscharter.org



UNOSAT

Contact Information: unosat@unitar.org
24/7 Hotline: +41 76 487 4998
www.unitar.org/unosat