



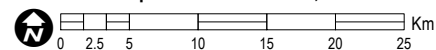
### Satellite detected water over Garsen Sub County, Tana River County

This map illustrates satellite-detected flood water extent over Garsen, Magarini, Malindi and Lamu West Sub Counties, Kenya. The analysis was conducted analyzing Sentinel-1 image acquired on the 4 May 2018. Within the extent of the map more than 25,000 ha of land appear to be inundated and around 20,000 people are living inside this flood water extent. Within the map extent, around 13,000 ha of inundated land are located inside Garsen sub county, potentially affecting 5,000 people. It is likely that flood waters have been systematically underestimated along highly vegetated areas along main river banks and within built-up urban areas because of the special characteristics of the satellite data used. This is a preliminary analysis and has not yet been validated in the field. Please send ground feedback to UNITAR UNOSAT.

#### Legend

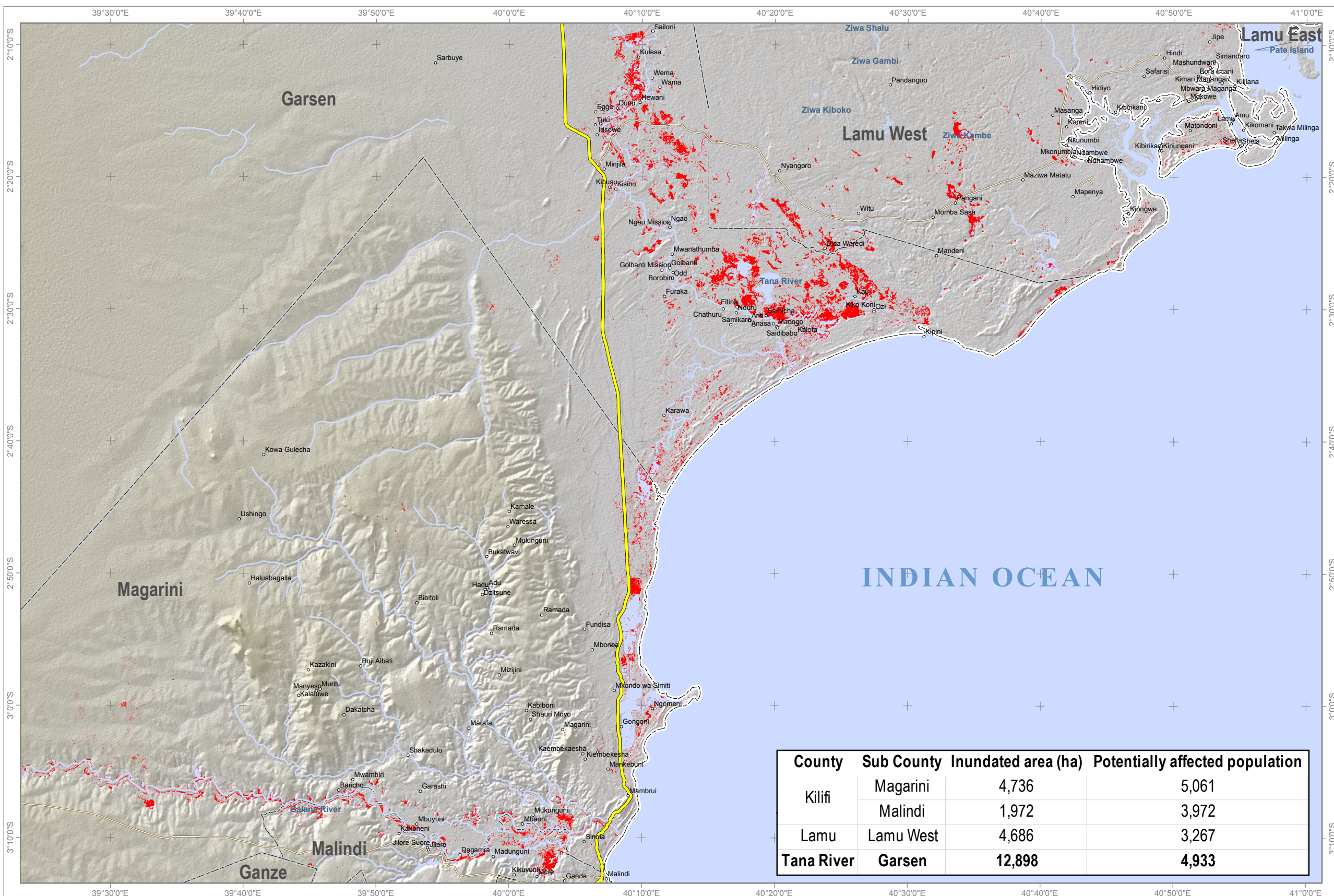
- Settlement
- Primary road
- Secondary road
- Reference water
- Satellite detected water as of 4 May 2018
- Sub county boundary
- International boundary

Map Scale for A3: 1:550,000



Analysis conducted with ArcGIS v10.4.1

Coordinate System: WGS 1984 UTM Zone 37N  
Projection: Transverse Mercator  
Datum: WGS 1984  
Units: Meter



County	Sub County	Inundated area (ha)	Potentially affected population
Kilifi	Magarini	4,736	5,061
	Malindi	1,972	3,972
Lamu	Lamu West	4,686	3,267
<b>Tana River</b>	<b>Garsen</b>	<b>12,898</b>	<b>4,933</b>

Satellite Data: Sentinel-1  
Imagery Date: 4 May 2018  
Resolution: 10 m  
Copyright: ESA  
Source: ESA  
Reference water: EC JRC/Google

Roads: Open Street Map  
Settlements: Data Exchange Platform for the Horn Africa (DEPHA) & OCHA ROSEA  
Administrative boundaries: Independent Electoral and Boundaries Commission (IEBC) & OCHA ROSEA  
Population: WorldPop 2015

Analysis: UNITAR - UNOSAT  
Production: UNITAR - UNOSAT

The depiction and use of boundaries, geographic names and related data shown here are not warranted to be error-free nor do they imply official endorsement or acceptance by the United Nations. UNOSAT is a program of the United Nations Institute for Training and Research (UNITAR), providing satellite imagery and related geographic information, research and analysis to UN humanitarian & development agencies & their implementing partners. This work by UNITAR-UNOSAT is licensed under a CC BY-NC 3.0.