








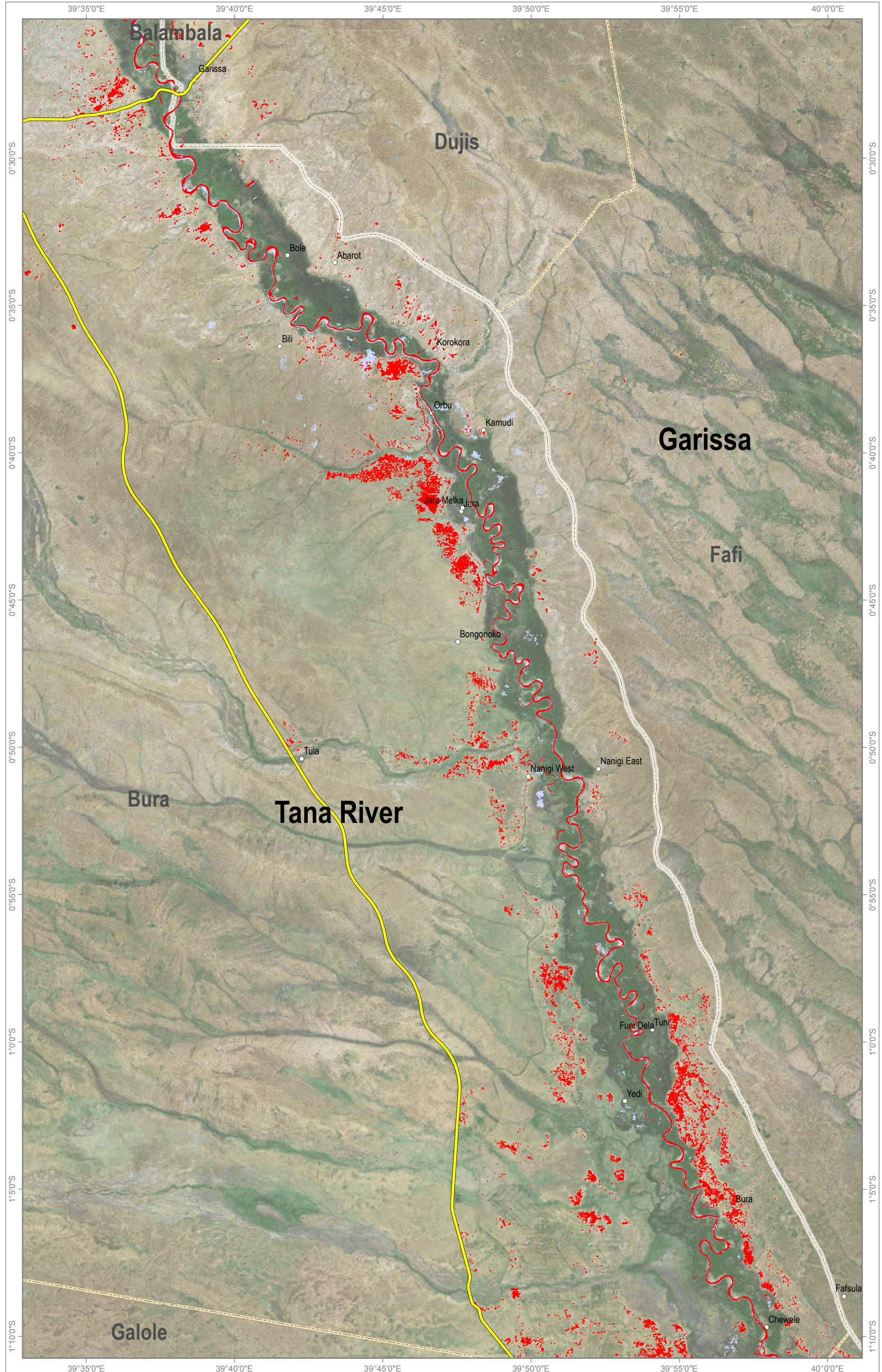


Satellite detected water along Tana River, Bura Sub County, Tana River county, Kenya

This map illustrates satellite-detected flood water extent along Tana River, Bura Sub County, Kenya. The analysis was conducted analyzing Sentinel-1 image acquired on the 4 May 2018. The analysis extent is focused on the river bed of Tana and the surrounding land between the primary road and the limit of the Tana River boundary, specifically where the population is concentrated. Within the analysis extent, more than 9,100 ha of land appear to be inundated and more than 9,800 people are living inside this flood water extent. It is likely that flood waters have been systematically underestimated along highly vegetated areas along main river banks and within built-up urban areas because of the special characteristics of the satellite data used. This is a preliminary analysis and has not yet been validated in the field. Please send ground feedback to UNITAR UNOSAT.

Legend

-  Settlement
-  Primary road
-  Secondary road
-  Reference water
-  Satellite detected water as of 4 May 2018
-  Sub county boundary
-  County boundary



Map Scale for A3: 1:250,000



Analysis conducted with ArcGIS v10.4.1

Coordinate System: WGS 1984 UTM Zone 37N
Projection: Transverse Mercator
Datum: WGS 1984
Units: Meter

Satellite Data: Sentinel-1
Imagery Date: 4 May 2018
Resolution: 10 m
Copyright: ESA
Source: ESA
Reference water: EC JRC/Google

Roads: Open Street Map
Settlements: Data Exchange Platform for the Horn Africa (DEPHA) & OCHA ROSEA
Administrative boundaries: Independent Electoral and Boundaries Commission (IEBC) & OCHA ROSEA

Population: Global Human Settlement (European Commission, Joint Research Centre (JRC))
Analysis: UNITAR - UNOSAT
Production: UNITAR - UNOSAT

The depiction and use of boundaries, geographic names and related data shown here are not warranted to be error-free nor do they imply official endorsement or acceptance by the United Nations. UNOSAT is a program of the United Nations Institute for Training and Research (UNITAR), providing satellite imagery and related geographic information, research and analysis to UN humanitarian & development agencies & their implementing partners. This work by UNITAR-UNOSAT is licensed under a CC BY-NC 3.0.