



Destroyed areas in Buthidaung, Maungdaw, and Rathedaung Townships of Rakhine State in Myanmar

This map illustrates areas of satellite-detected destroyed or otherwise damaged settlements in Buthidaung, Maungdaw, and Rathedaung Townships in Northern Rakhine State in Myanmar. Analysis primarily used satellite imagery collected on multiple dates from August 2017 to March 2018. Satellite analysis combined with information on settlement locations in Myanmar indicate that approximately 392 towns and villages from a total number of 993 were affected. This includes 96 out of 371 in Buthidaung, 277 out of 399 in Maungdaw, and 19 out of 223 in Rathedaung. Note that a sample of these locations are illustrated on the map due to the limitations of the map size and scale. UNOSAT performed an estimation of the number of destroyed structures in the 392 affected settlements based on the structure count in a sample of representative areas. UNOSAT estimates that approximately 37,700 structures were destroyed in the affected townships between 25 August 2017 and 18 March 2018, with an estimation error of approximately 10%. This is a preliminary analysis and has not yet been validated in the field. Please send ground feedback to UNITAR-UNOSAT.

Legend

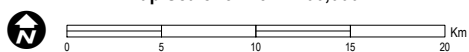
- Populated place
- Township capital
- International boundary
- Township boundary

Areas with visible destruction summarized by when detected

- 25 August 2017 - 16 September 2017
- 25 August 2017 - 11 October 2017 (*)
- 16 September 2017 - 11 October 2017
- 11 October 2017 - 16 December 2017
- 16 December 2017 - 20 February 2018
- 20 February 2018 - 18 March 2018

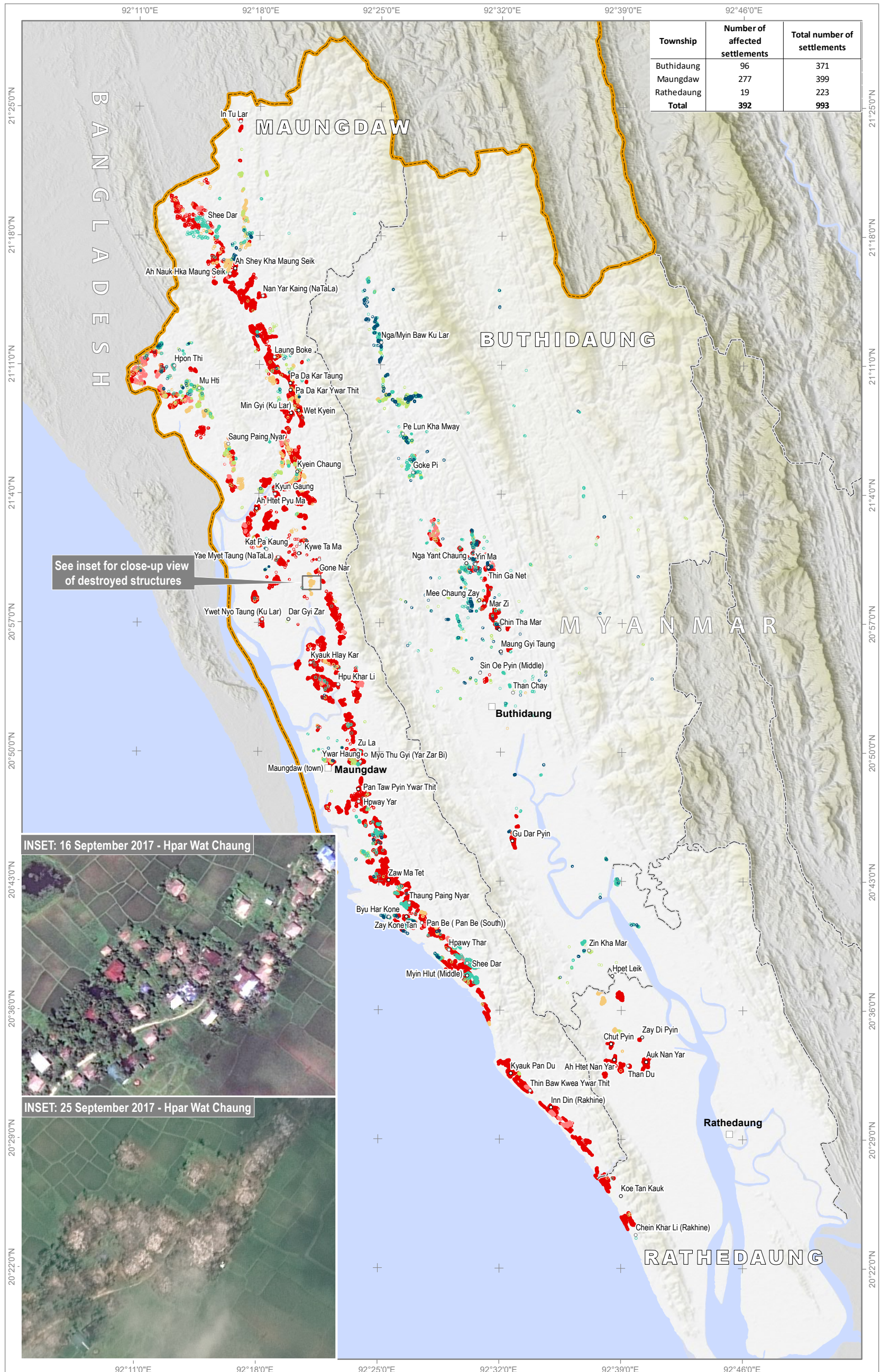
(*) Areas covered by clouds on September imagery

Map Scale for A3: 1:400,000



Analysis conducted with ArcGIS v10.4.1

Coordinate System: WGS 1984 UTM Zone 46N
 Projection: Transverse Mercator
 Datum: WGS 1984
 Units: Meter



Satellite Data (1): GeoEye-1, WorldView-1, WorldView-2 and WorldView-3
 Imagery Dates: Multiple dates ranging between 31 August 2017 to March 2018
 Resolution: 31-50 cm
 Copyright: © 2018 DigitalGlobe

Source: US Department of State - HIU - NextView License
 Satellite Data (3): Multiple previous images
 Other Data: HDX; MIMU
 Analysis produced by UNITAR-UNOSAT upon request of The Independent International Fact-Finding Mission on Myanmar.

The depiction and use of boundaries, geographic names and related data shown here are not warranted to be error-free nor do they imply official endorsement or acceptance by the United Nations. UNOSAT is a program of the United Nations Institute for Training and Research (UNITAR), providing satellite imagery and related geographic information, research and analysis to UN humanitarian & development agencies & their implementing partners. This work by UNITAR-UNOSAT is licensed under a CC BY-NC 3.0.