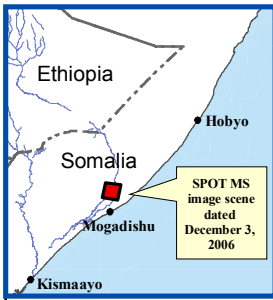


Shabeelle River Flooding Near Jawhar, Somalia, December 3, 2006

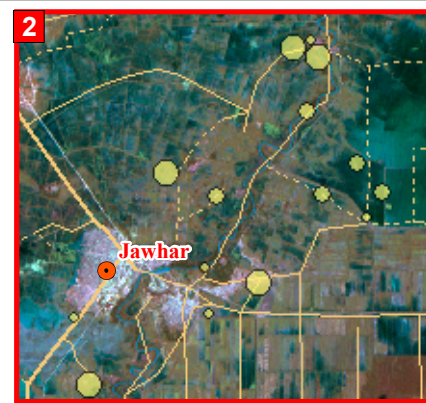


SPOT IMAGE

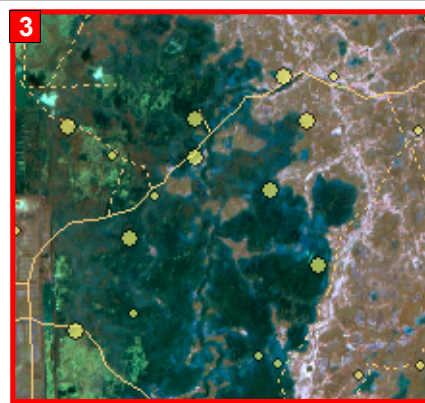
Based on settlement population estimates and the interpreted wet and flooded areas within this image, approximately 64,000 people are located within a 150 meter buffer of flooded areas. Approximately 107,000 people are within a 150 meter buffer of areas estimated to be flooded or wet. If the buffer is extended to 250 meters, the number of affected people increases to approximately 87,000 and 127,000, respectively.



Agricultural fields are visible beneath the flood water surface (blue areas). This scene is a subset of the SPOT MS image above and was PAN sharpened.



Population center of Jawhar is surrounded by flood waters. Dark areas indicate probable wet or flooded areas.



Flood waters extending far beyond river banks have inundated many small settlements and have severely limited transportation throughout the region. Dark areas indicate probable wet or flooded regions.

Estimated Population

- 0 - 200
- 201 - 600
- 601 - 1,500
- 1,501 - 3,000
- 3,001 - 6,500

● Jawhar District capital, Middle Shabeelle Region

— Major road

— Secondary road

- - - Track

Map Information

Multispectral imagery:
 SPOT 4
 Instrument:
 HRVIR 2
 Acquisition date:
 3 Dec. 2006
 Scene center:
 Lat N2° 47' 41",
 Lon E45° 25' 45"
 Image resolution: 20 m
 Copyright: CNES 2006,
 distributed by SPOT Image
 GIS data: GIST, NGA, HIU
 Map production:
 Humanitarian Information Unit
 Projection: UTM zone 38N
 Datum: WGS 1984
 Population counts based
 on UNDP sources.