

DAMAGE ASSESSMENT FOR YWE VILLAGE, LABUTTA TOWNSHIP, MYANMAR

Damage Assessment with WorldView-1 Satellite Imagery Recorded 6 May 2008

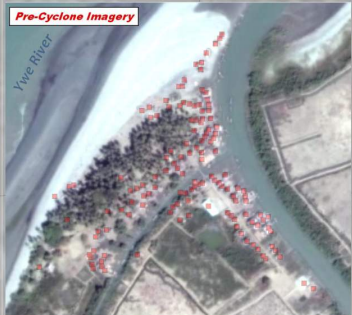
This map presents a satellite-based damage assessment for the affected village of Ywe, Labutta Township (MMR017016), Ayeeyarwady Division, Myanmar. Damaged buildings have been identified with WorldView-1 satellite imagery acquired on 6 May 2008 at a spatial resolution of 50cm. Pre-cyclone Quickbird imagery in Google Earth from 10 Feb. 2004 was also used. This is an initial damage assessment & has not yet been validated in the field.

GISCORPS **RPS** **URSA**
 Damage assessment by UNOSAT with assistance from GISCorps volunteers (www.giscorps.org).

Cyclone Nargis 22 May 2008
Version 1.0
 TC-2008-000057-MMR
 Township ID: MMR017016



Damage Summary for Ywe Village:
 - 134 buildings likely destroyed
 - This represents approximately 100% of all Ywe buildings

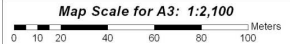
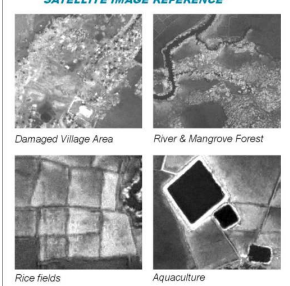


10 Feb. 2004 QuickBird - Digital Globe - Google Earth



- Legend**
- Village Main Road
 - Township Boundary
 - Airport
 - Port
 - Health Facility

- SATELLITE DAMAGE ASSESSMENT**
- Building: Severely Damaged / Destroyed
 - Building: Under cloud in post-cyclone imagery but high probability of destruction due to severe storm-surge land erosion
 - Building: No Visible Damage
 - Building Not Assessed (Outside Post-Cyclone Imagery)



Satellite Data WorldView-1
 Resolution 50 cm
 Imagery Dates 6 May 2008
 Source Digital Globe (2008)
 Processing Pacific Disaster Center (PDC)
 Additional Imagery Archived QuickBird (GoogleEarth)
 GIS Data GISCorps, NGA, RespondKey/keys
 Health Data WHO
 Admin data MIMU, WHO
 Damage Analysis UNOSAT & GISCorps
 Map Production UNOSAT (22 May 2008)
 Projection UTM Zone 46 North - WGS 1984

The depiction and use of boundaries, geographic names and related data shown here are not warranted to be error-free nor do they imply official endorsement or acceptance by the United Nations. This map was produced by the United Nations Institute for Training and Research (UNITAR) Operational Satellite Applications Program (UNOSAT). UNOSAT provides satellite imagery & related geographic information to UN humanitarian & development agencies & their implementing partners.

UNOSAT
 satellite solutions for all
 Contact Information: info@unosat.org
 24/7 Hotline: +41 76 487 4998
 www.unosat.org