

Overview of Flood Waters in Pauktaw and Kyaukpyu Province, Myanmar

Flood Analysis with Radasat-2 Satellite Imagery Recorded on 25 October 2010

Disaster coverage by the International Charter 'Space and Major Disasters'. For more information on the Charter, which is about assisting the disaster relief organizations with multi-satellite data and information, visit www.disasterscharter.org

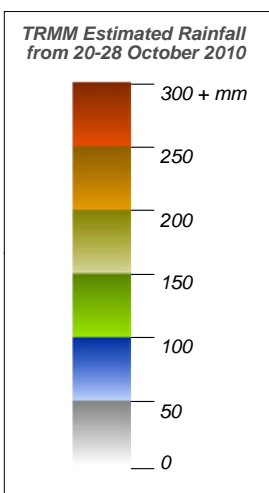
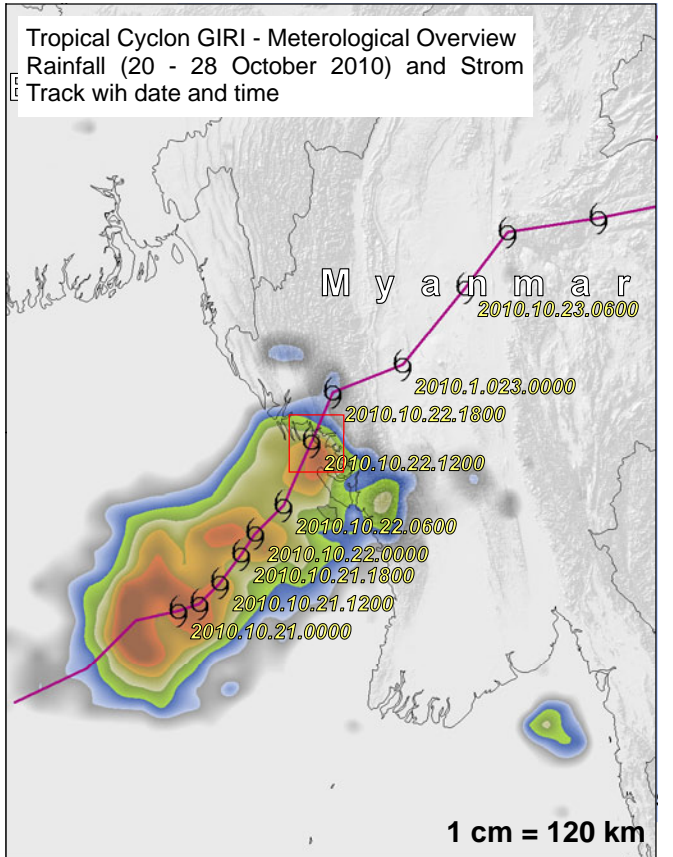
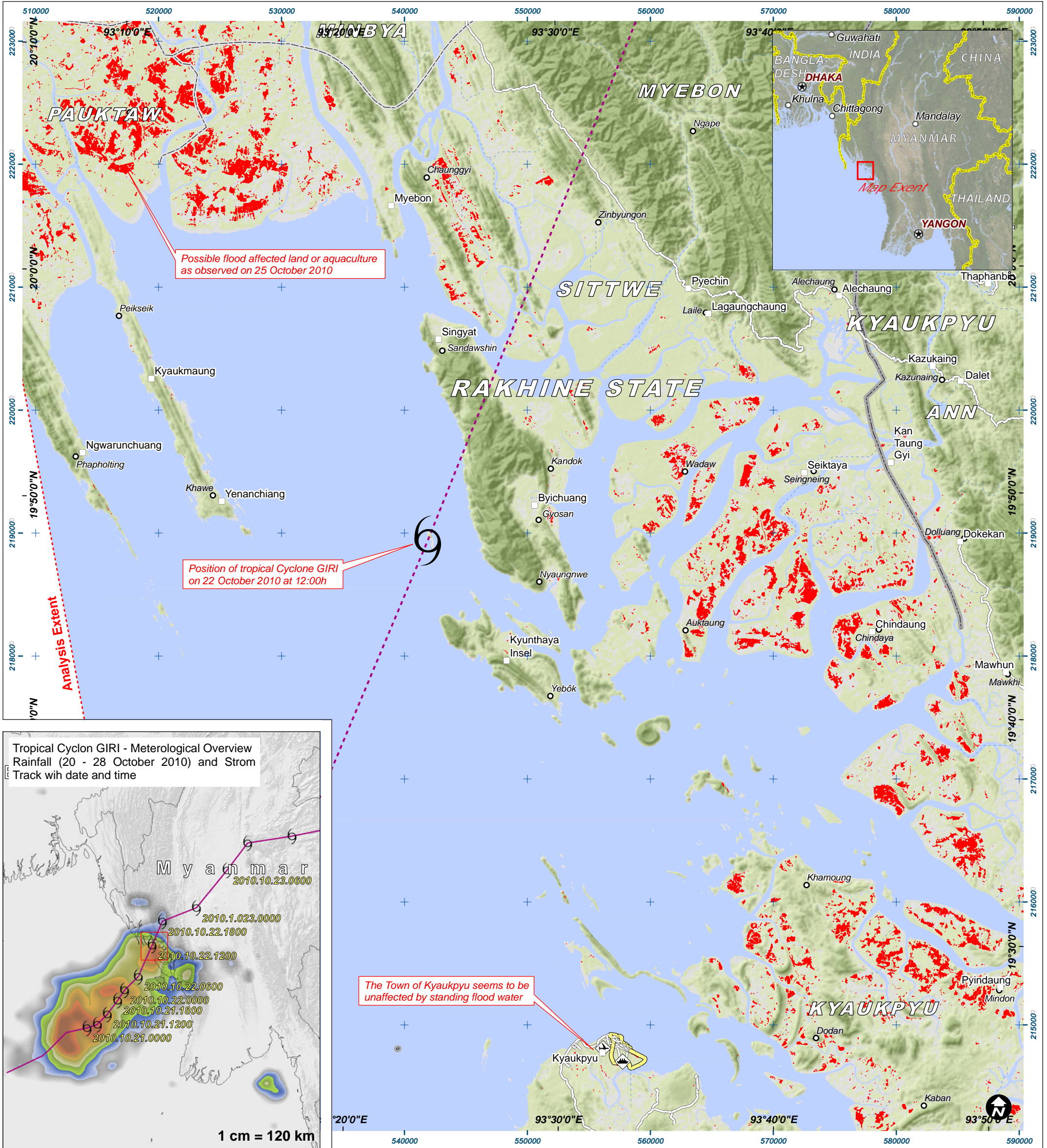


Tropical Cyclone 28 October 2010
Rains & Flooding

Version 1.0



Glide No:
TC-2010-000211-MMR



- Legend**
- Town / City
 - Village / Settlement
 - ✈ Airport / Airfield
 - ⚓ Port
 - Province Border
 - District Boundary
 - Tehsil Boundary
 - - - Drainage Line
 - Primary Road
 - Secondary / Local Road
 - Railroad
 - - - Storm Track

SATELLITE ASSESSMENT CLASSIFICATION:

- Probable Flood Waters and/or Aquaculture as on 25 October 2010
- Permanent Water Bodies as on 25 October 2010

This map presents the permanent water bodies and potential flood affected land and/or aquaculture in Rakhine State in Myanmar. The analysis reaches from the Districts of Pauktaw to Kyaukpyu. Radasat-2 imagery was acquired on 25 October 2010 and has a resolution of 25m. Due to the coastal and delta character of the observed area and lack of corresponding pre-crisis radar data, the analysis has a high level of uncertainty. Detected water bodies likely reflect an underestimation of all flood-affected areas within the map extent. This analysis has not yet been validated in the field. Please send ground feedback to UNITAR / UNOSAT.

Map Scale for A3: 1:300,000

0 6 12 Kilometers

Crisis Satellite DataRadasat-2
Resolution25 meters
Image Date..... 25 October 2010
Source RADARSAT-2 © MDA 2009
PreCrisis Satellite Data Not available
Rainfall Data TRMM (NASA)
Resolution: 0.25 deg
Date Series: 20 - 28 October 2010
Cyclone GIRI - Data: CIRA
Elevation Data Aster GDEM
Source METI & NASA 2009
GIS Data NGA, OCHA, UNEP
Hydrology Data USGS HydroSheds
Road Data : Google Map Maker 2010
Airfield Data Google Maps
Flood Analysis UNITAR / UNOSAT
Map Production UNITAR / UNOSAT
Projection UTM Zone 46N
Datum WGS-84

The depiction and use of boundaries, geographic names and related data shown here are not warranted to be error-free nor do they imply official endorsement or acceptance by the United Nations. UNOSAT is a program of the United Nations Institute for Training and Research (UNITAR), providing satellite imagery and related geographic information, research and analysis to UN humanitarian & development agencies & their implementing partners.

UNITAR
United Nations Institute for Training and Research

UNOSAT

Contact Information: unosat@unitar.org
24/7 Hotline: +41 76 487 4998
www.unosat.org