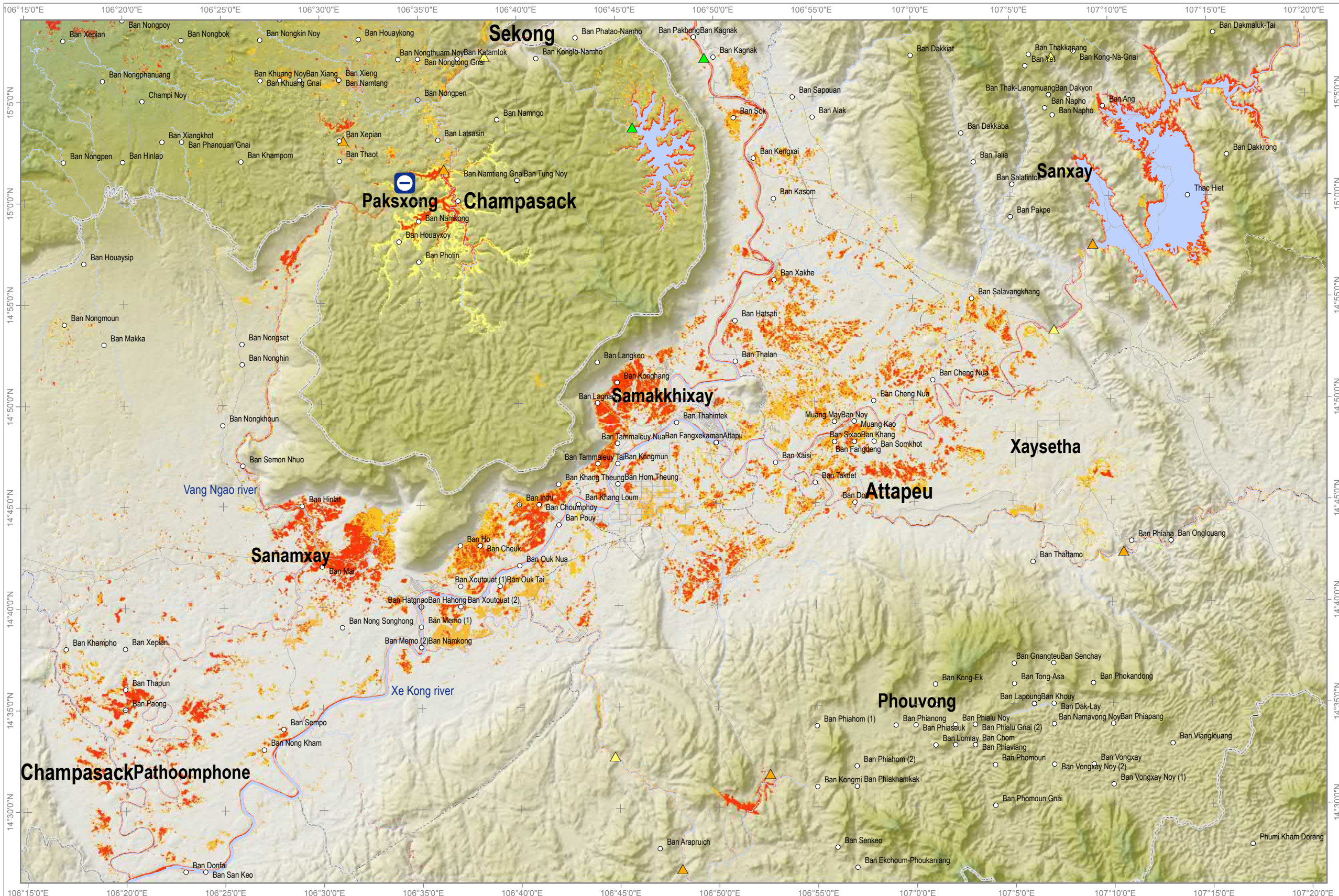
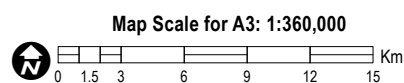




Time series: evolution satellite detected water extent over Sanamxay District, Attapeu Province, Lao PDR

This map illustrates a time series analysis of the evolution of satellite-detected surface waters in Sanamxay district, Attapeu province, based on satellite data collected on 13, 25 and 29 July 2018. Within the current map extent, on 13 July 2018, before the collapse of the dam, a total surface of 47,717 ha was detected as inundated and the reservoir controlled by the dam was full of water. As of 25 July 2018, two days after the dam collapsed, an additional surface of 7,531 ha of inundated areas were detected, representing an increase of the surface waters of 16%. On 29 July 2018, floodwaters are receding, especially along the riverbanks of Xe Kong River. A total surface of 30,435 ha was detected as inundated at that date, representing a decrease of the surface waters of 45%. The reservoir that was controlled by the dam has continuously decreased in its size since the dam collapsed. It is likely that flood waters have been systematically underestimated along highly vegetated areas, along main riverbanks and within built-up urban areas because of the special characteristics of the used satellite data. Additional optical VHR data are needed to validate analysis over areas covered by mud, hardly detected by radar data. This is a preliminary analysis and has not yet been validated in the field. Please send ground feedback to UNITAR - UNOSAT.

- Legend**
- Populated place
 - ▲ Operational dam
 - ▲ Planned dam
 - ▲ Dam under construction
 - ⊖ Collapsed dam
 - Local/Urban Road
 - Reference water
 - Flood water extent as of 29 July 2018
 - Flood water extent as of 25 July 2018
 - Flood water extent as of 13 July 2018
 - District boundary
 - Province boundary



Satellite Data (Post): Sentinel-1
Imagery Dates: 25 & 29 July 2018
Resolution: 10 m
Copyright: ESA 2018
Source: ESA

Satellite Data (Pre): Sentinel-1
Imagery Date: 13 July 2018
Resolution: 10 m
Copyright: ESA 2018
Source: ESA

Other data: OCHA ROAP, WFP
Waterways: Open Street Map
Roads: Open Street Map
Analysis: UNITAR - UNOSAT
Production: UNITAR - UNOSAT



The depiction and use of boundaries, geographic names and related data shown here are not warranted to be error-free nor do they imply official endorsement or acceptance by the United Nations. UNOSAT is a program of the United Nations Institute for Training and Research (UNITAR), providing satellite imagery and related geographic information, research and analysis to UN humanitarian & development agencies & their implementing partners. This work by UNITAR-UNOSAT is licensed under a CC BY-NC 3.0.