

8 MARCH 2022




PRELIMINARY SATELLITE-DERIVED LANDSLIDE IMPACT ASSESSMENT



Mount Talakmau in Sumatra Barat Province, Indonesia


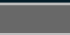
 Status: Landslides observed in northwestern and northeastern part of Mount Talakmau

 Further action(s): Continue monitoring

INDONESIA

INDONESIA

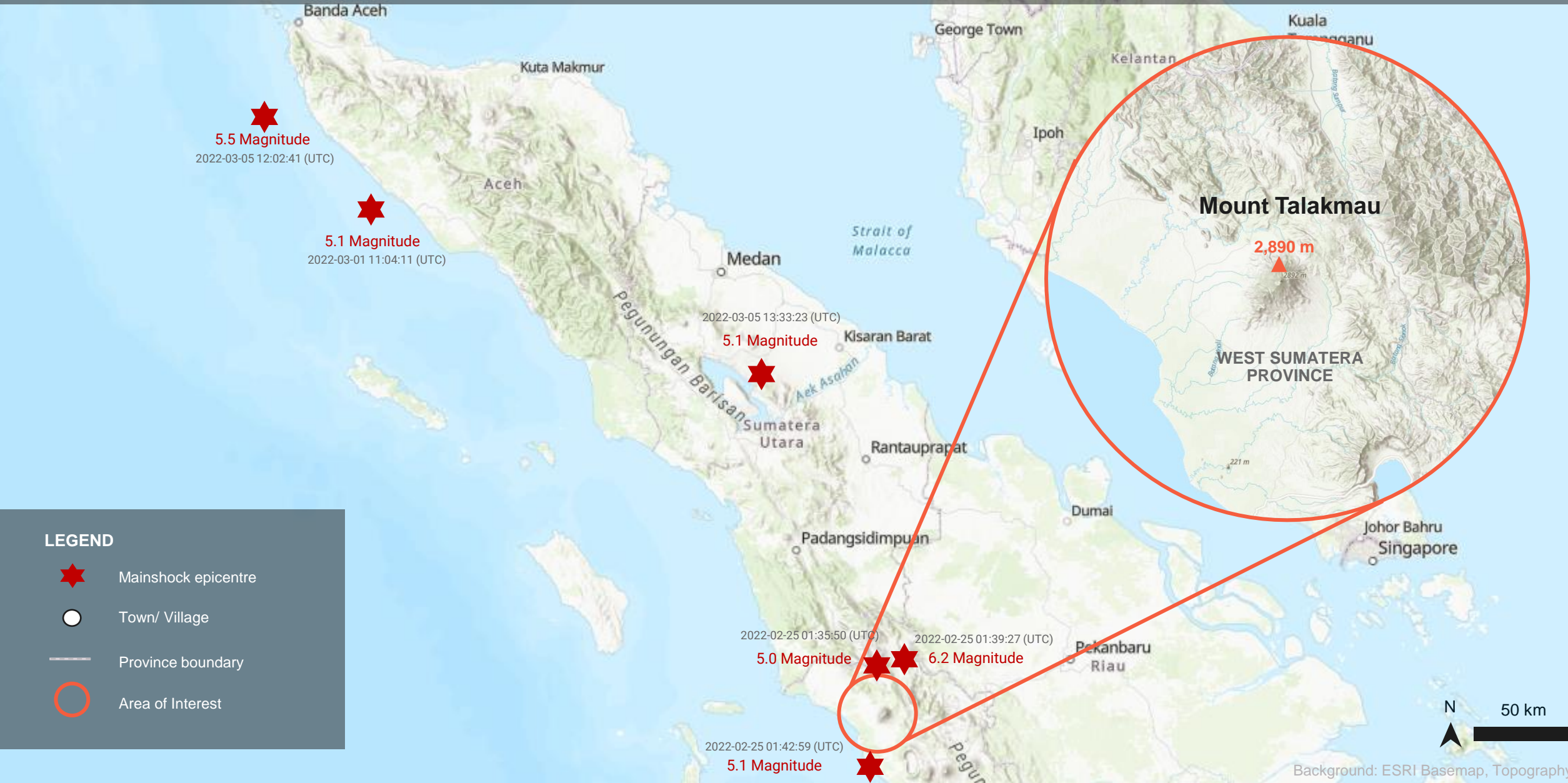


-  AREA OF INTEREST
-  PROVINCE

INDONESIA

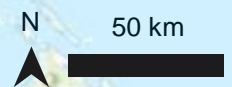


INDONESIA



LEGEND

- ★ Mainshock epicentre
- Town/ Village
- Province boundary
- Area of Interest



Background: ESRI Basemap, Topography

MOUNT TALAKMAU, WEST SUMATRA PROVINCE

Landslides in northwestern and northeastern part of Mount Talakmau

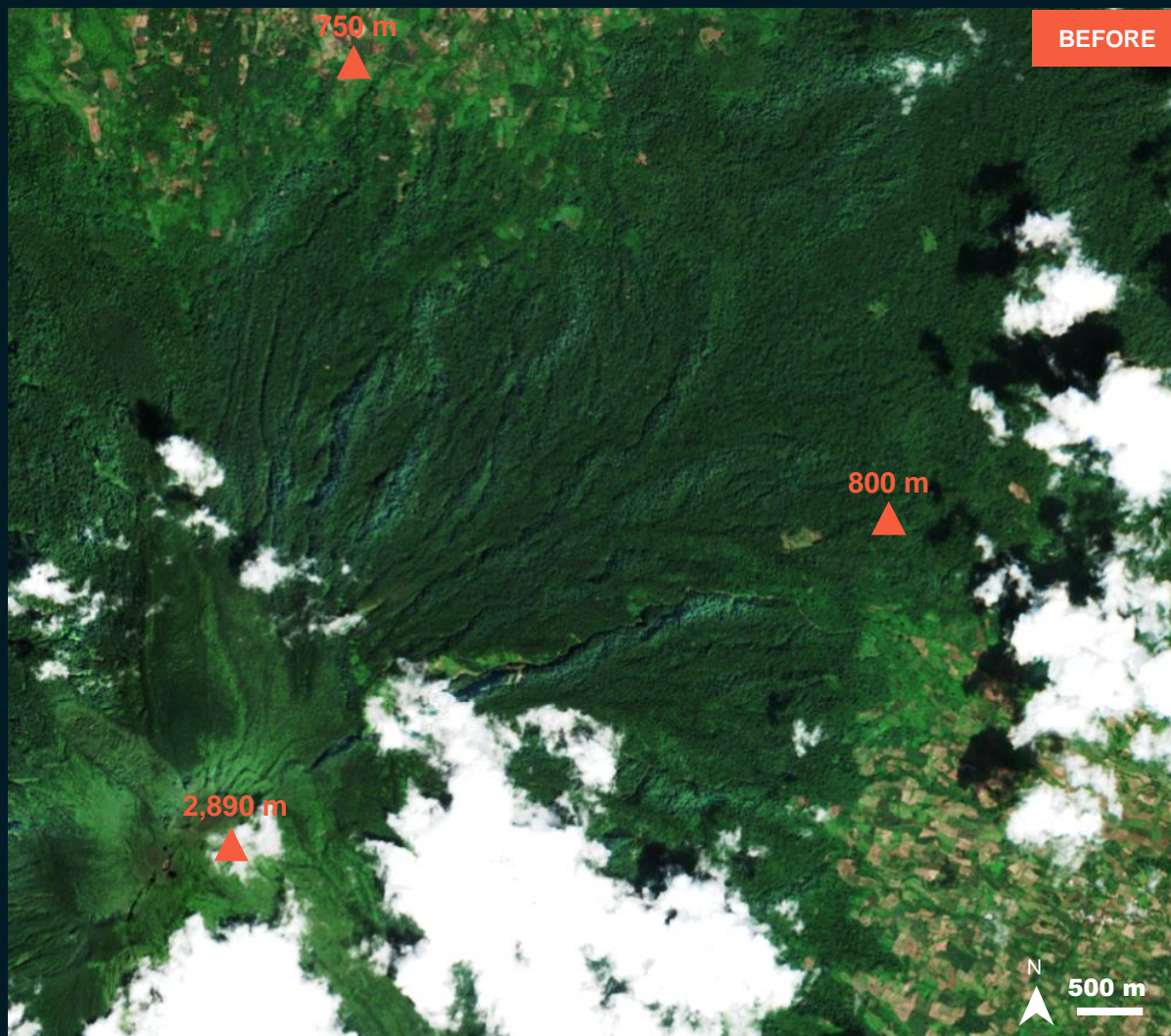


Sentinel-2 image acquired on 4 March 2022
Image Center : 99°59'13.331"E 0°4'41.769"N

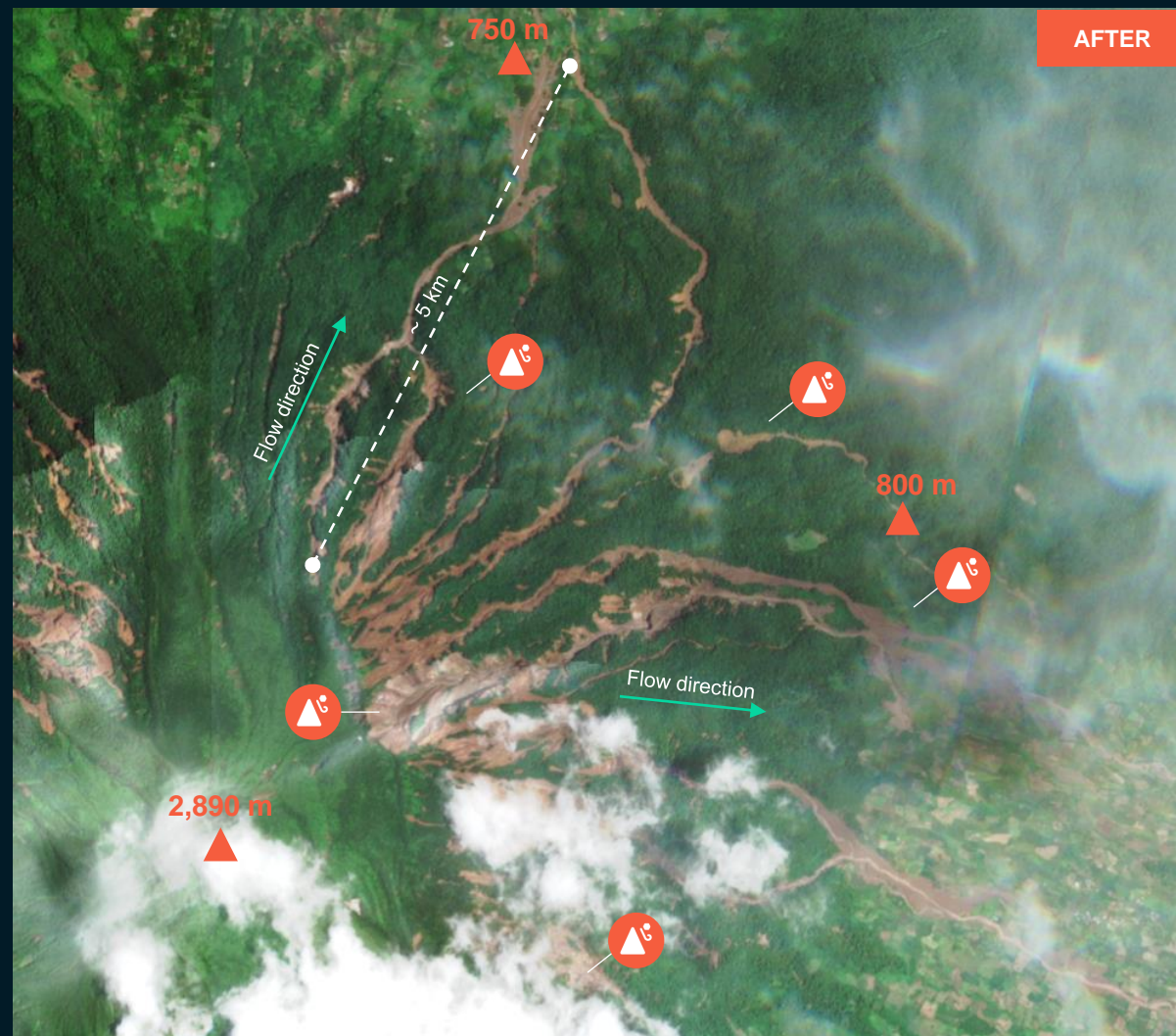
MOUNT TALAKMAU, LUBUK SIKAPING SUB DISTRICT, PASAMAN DISTRICT, SUMATERA BARAT PROVINCE

Landslides observed

Image center:
100°0'12.273"E
0°5'27.011"N



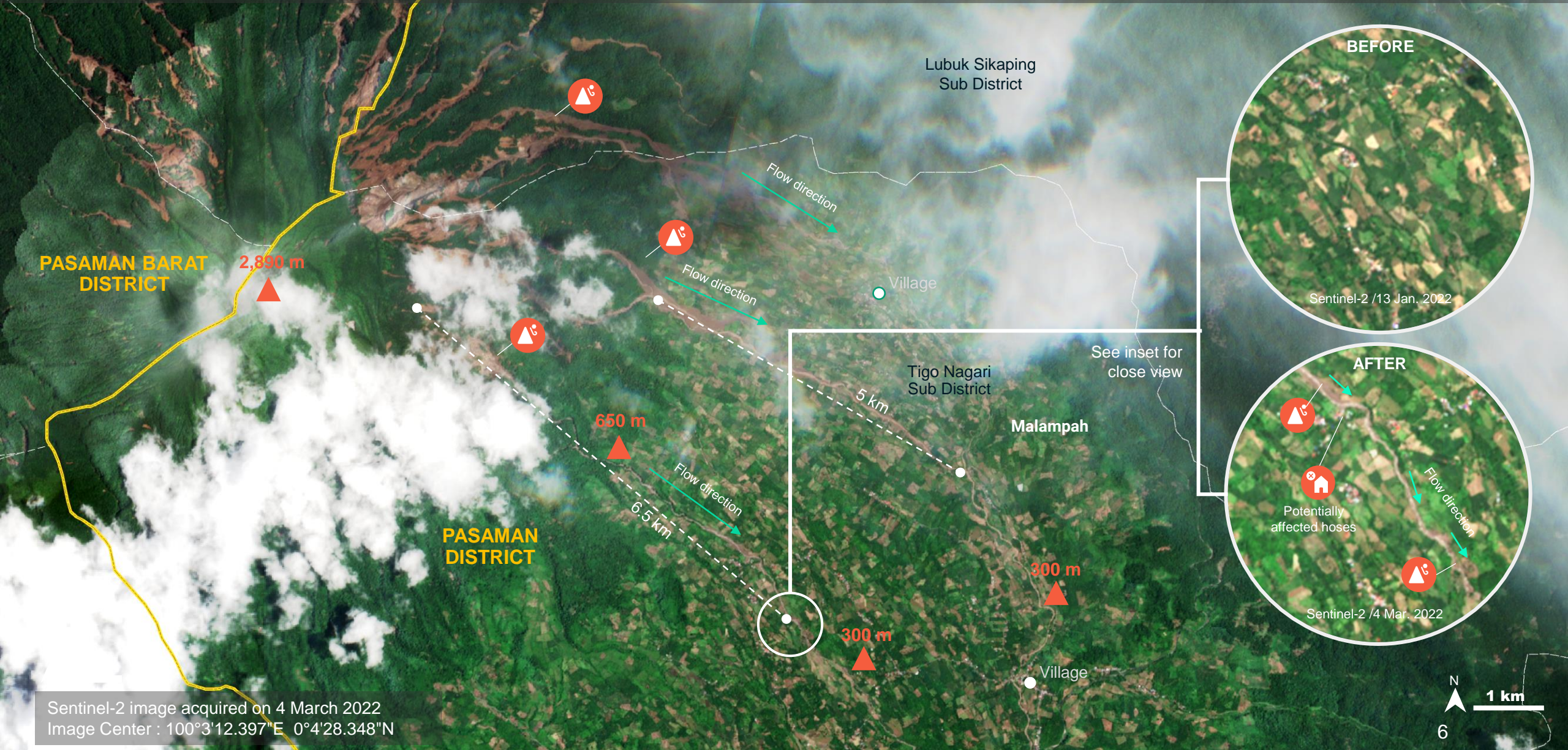
Sentinel-2 / 13 January 2022



Sentinel-2 / 4 March 2022

MOUNT TALAKMAU, LUBUK SIKAPING AND TIGO NAGARI SUB DISTRICT, PASAMAN DISTRICT, SUMATERA BARAT PROVINCE

Landslides observed

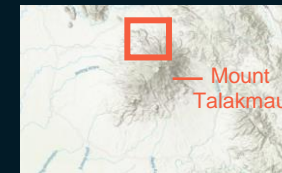


Sentinel-2 image acquired on 4 March 2022
Image Center : 100°3'12.397"E 0°4'28.348"N

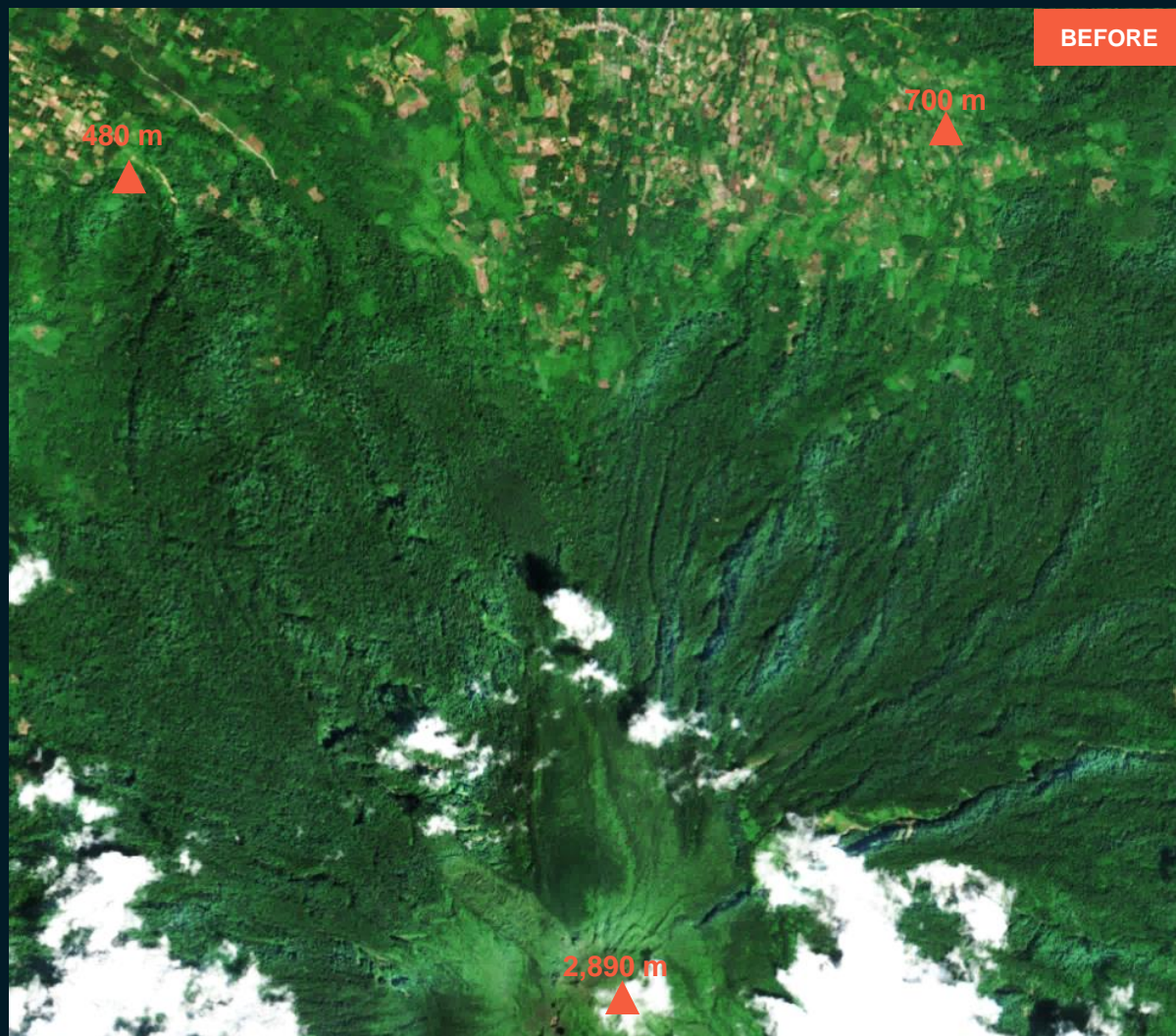


MOUNT TALAKMAU, TALAMAU SUB DISTRICT, PASAMAN BARAT DISTRICT, SUMATERA BARAT PROVINCE

Image center:
99°59'24.517"E
0°6'31.899"N



Landslides observed



Sentinel-2 / 13 January 2022



Sentinel-2 / 4 March 2022

MOUNT TALAKMAU, TALAMAU SUB DISTRICT, PASAMAN BARAT DISTRICT, SUMATERA BARAT PROVINCE

Landslides observed



BEFORE
Sentinel-2 / 13 Jan. 2022

AFTER
Sentinel-2 / 4 Mar 2022

Potentially affected hoses

Flow direction

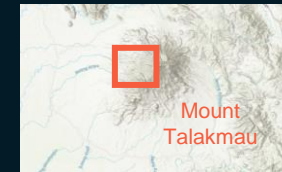
See inset for close view

Sentinel-2 image acquired on 4 March 2022
Image Center : 99°59'24.517"E 0°6'31.899"N

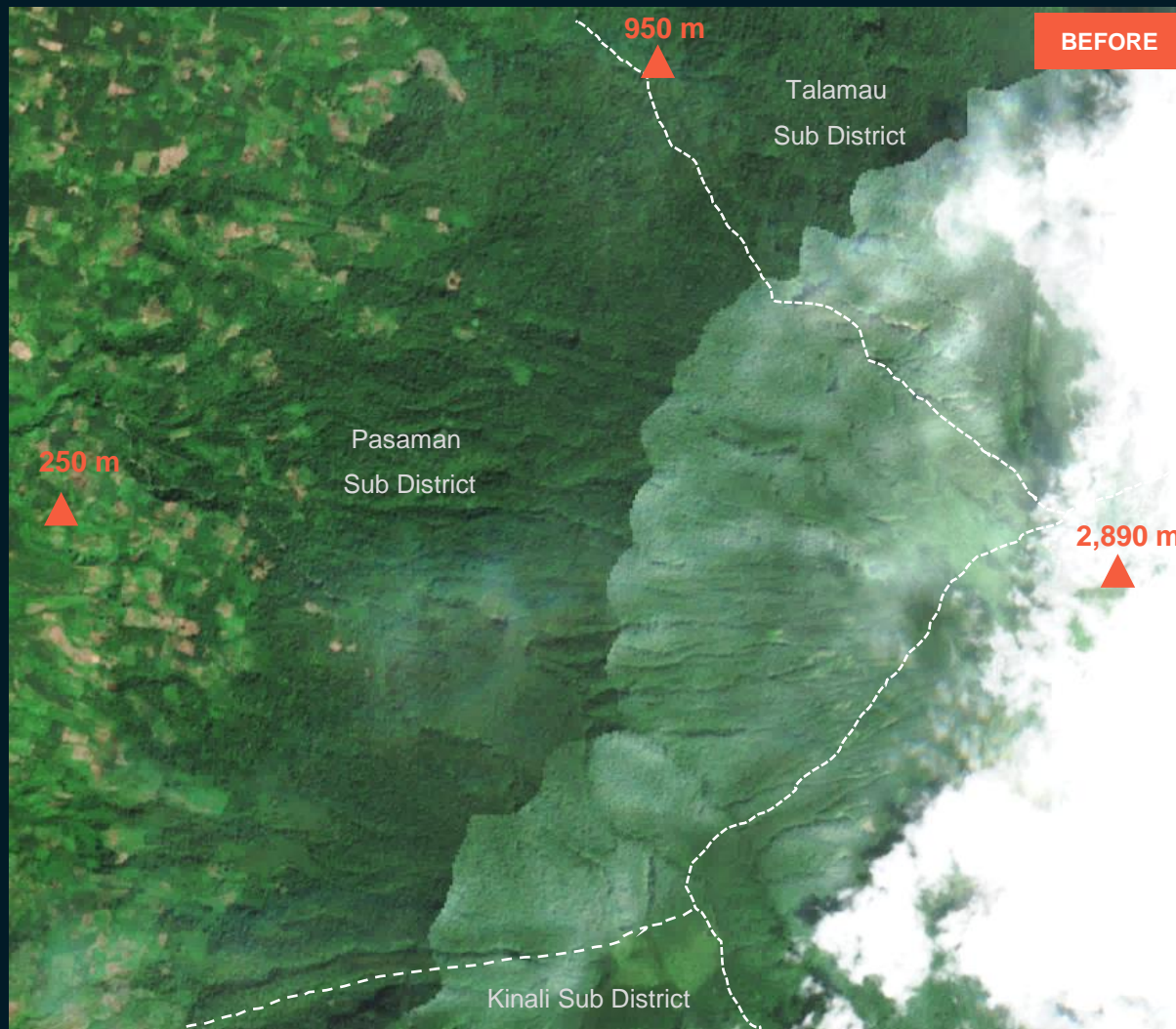


MOUNT TALAKMAU, PASAMAN SUB DISTRICT, PASAMAN BARAT DISTRICT, SUMATERA BARAT PROVINCE

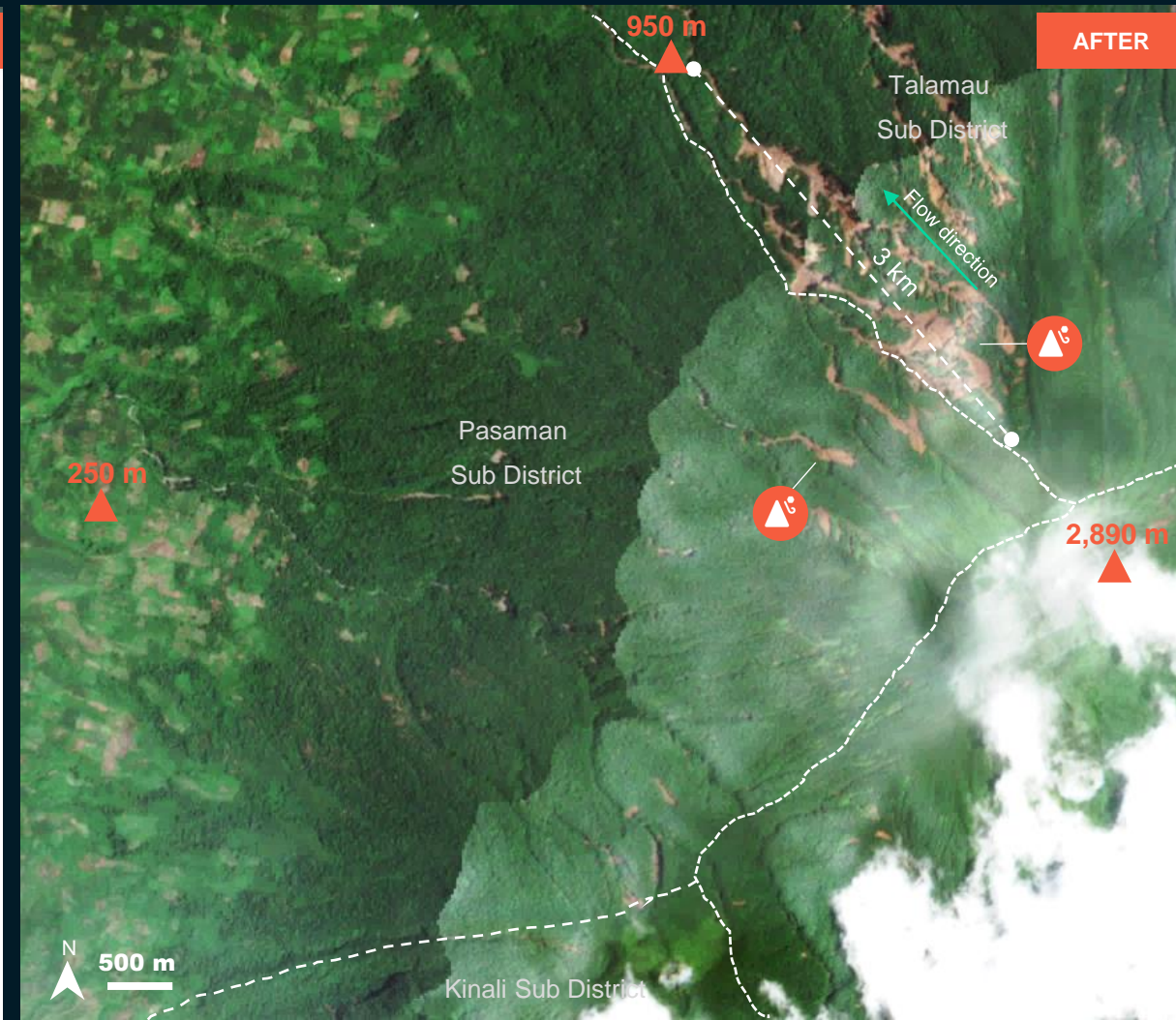
Image center:
99°56'46.431"E
0°4'51.804"N



Landslides observed



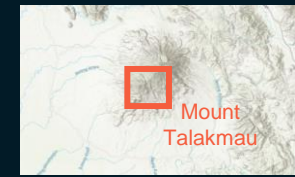
Sentinel-2 / 24 November 2021



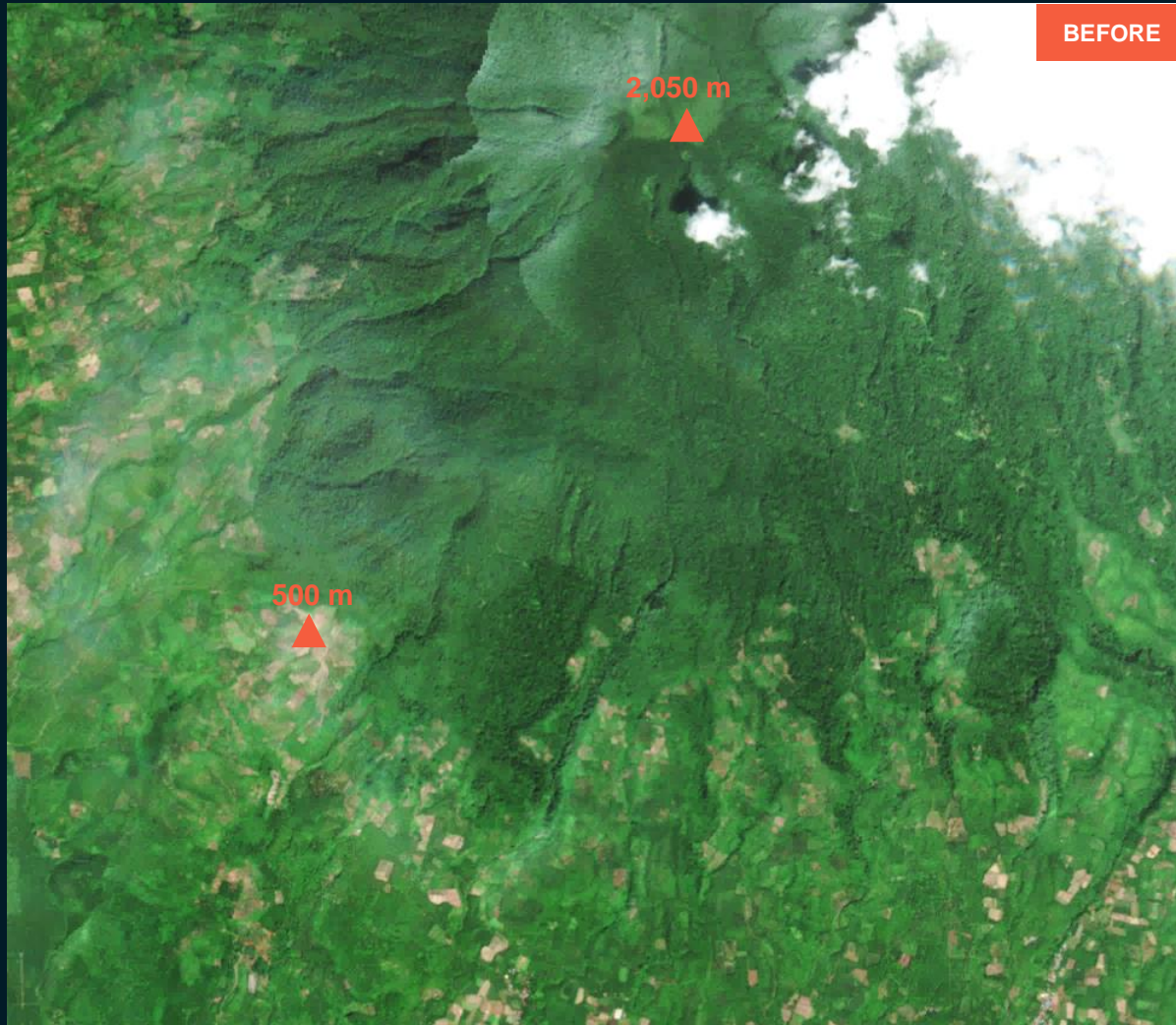
Sentinel-2 / 4 March 2022

MOUNT TALAKMAU, KINALI SUB DISTRICT, PASAMAN BARAT DISTRICT, SUMATERA BARAT PROVINCE

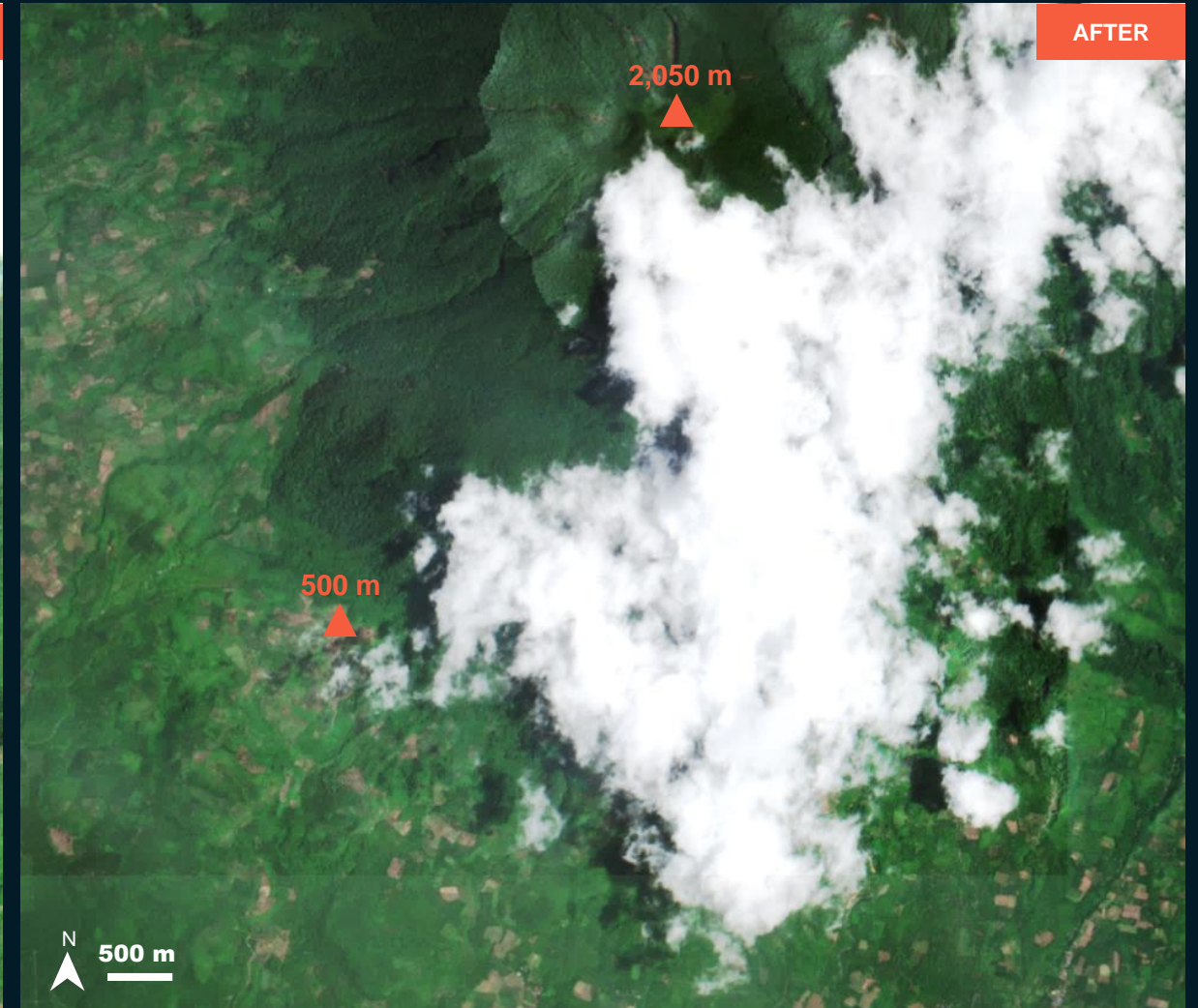
Image center:
99°56'52.738"E
0°2'2.902"N



No landslides observed in cloud-free zone



Sentinel-2 / 24 November 2021



Sentinel-2 / 4 March 2022

Summary Of Findings

- Landslides observed in Lubuk Sikaping Sub District, Pasaman District and Talamau Sub District, Pasaman Barat District of Sumatera Barat Province as of 4 March 2022.
- No landslides observed in Kinali and Pasaman Sub and District, Pasaman Barat District, Sumatera Barat Province as of 4 March 2022.

COPYRIGHTS AND SOURCES

Data sources:

(1) Satellite Image (Post-event)

Sentinel-2B / 4 March 2022 about 03:26 UTC
Resolution: 10 m
Copyright: Contains modified Copernicus Sentinel Data [2022]
Source: ESA

(2) Satellite Image (Pre-event)

Sentinel-2B / 13 January 2022 at 03:31 UTC
Sentinel-2B / 24 November 2022 at 03:30 UTC
Resolution: 10 m
Copyright: Contains modified Copernicus Sentinel Data [2022]
Source: ESA

(3) Ancillary data

Mainshock epicentre : National Earthquake Information Center
(NEIC) – USGS

Administrative boundaries: Badan Pusat Statistik
(BPS - Statistics Indonesia)

Analysis: United Nations Satellite Centre (UNOSAT)
Production: United Nations Satellite Centre (UNOSAT)

 **@UNOSAT**

 **@UNITAR.unosat**



UNOSAT, United Nations Institute for Training
and Research (UNITAR)
7 bis, Avenue de la Paix, CH-1202 Geneva 2,
Switzerland

T +41 22 917 4720
E unosat@unitar.org
www.unosat.org