

MADAGASCAR

Mananjary

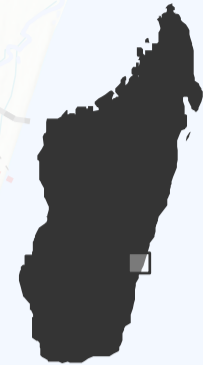
MANAKARA ATSIMO DISTRICT, VATOVAVY FITOVINANY REGION



IMAGERY ANALYSIS: 24/02/2022 PUBLISHED 25/02/2022 V1.

ANALYSED AREA	FLOODS EXTENT	POPULATION POTENTIALLY EXPOSED
3,000km ²	200km ²	39,000

TROPICAL CYCLONE TC20220221MDG



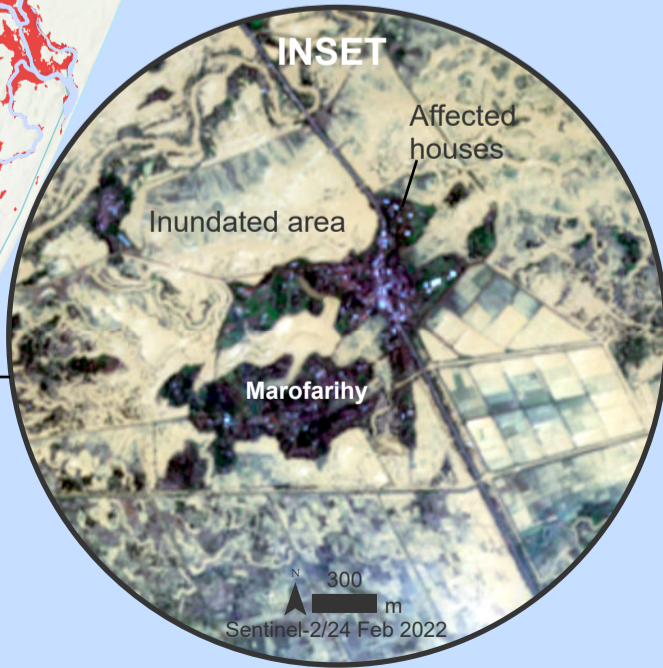
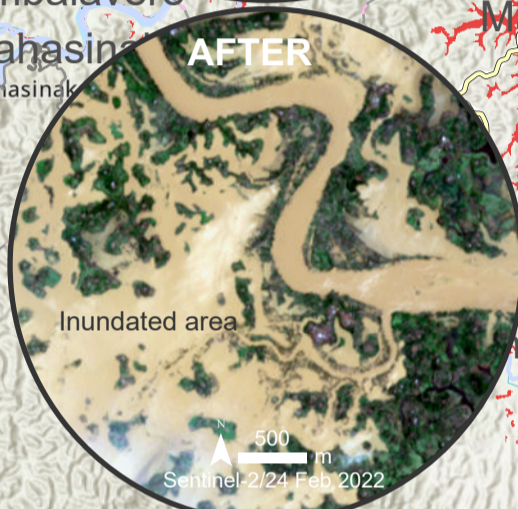
Satellite detected water extents in Manakara Atsimo district, Vatovavy Fitovinany region, Madagascar as of 24 February 2022

This map illustrates satellite-detected surface waters in Manakara Atsimo district, Vatovavy Fitovinany region, Madagascar as observed from a Sentinel-2 image acquired on 24 February 2022 at 10:00 local time. Within the analyzed cloud free zones of about 3,000 km², a total of about 200 km² of lands appear to be flooded. Based on Worldpop population data and the detected surface waters, about 39,000 people are potentially exposed or living close to flooded areas.

This is a preliminary analysis and has not yet been validated in the field. Please send ground feedback to United Nations Satellite Centre (UNOSAT).

Legend

- City/Town
- Secondary road
- Tertiary road
- Other road
- River
- District boundary
- Commune boundary
- Analysis extent
- Reference water
- Satellite detected water [24 Feb 2022]



Spatial Reference
 Name: WGS 1984 UTM Zone 38S
 PCS: WGS 1984 UTM Zone 38S
 GCS: GCS WGS 1984
 Datum: WGS 1984
 Projection: Transverse Mercator

Satellite Data: Sentinel-2
 Imagery Date: 24 Feb 2022 at 07:00 UTC
 Resolution: 10 m
 Copyright: Contains modified Copernicus Sentinel Data [2022]
 Source: ESA

Administrative boundaries: Madagascar National Disaster Management Office (BNGRC)
 Population data: WorldPop (2020)
 Reference Water: ESRI 2020 Land Cover
 Populated place: OpenStreetMap

Road data: OpenStreetMap
 Waterways: OpenStreetMap
 Background: ESRI Topography
 Background (insets): ESRI Basemap
 Analysis: United Nations Satellite Centre (UNOSAT)
 Production: United Nations Satellite Centre (UNOSAT)

