


15 Feb 2022




# TROPICAL CYCLONE DOVI, PRELIMINARY SATELLITE- DERIVED DAMAGE ASSESSMENT,

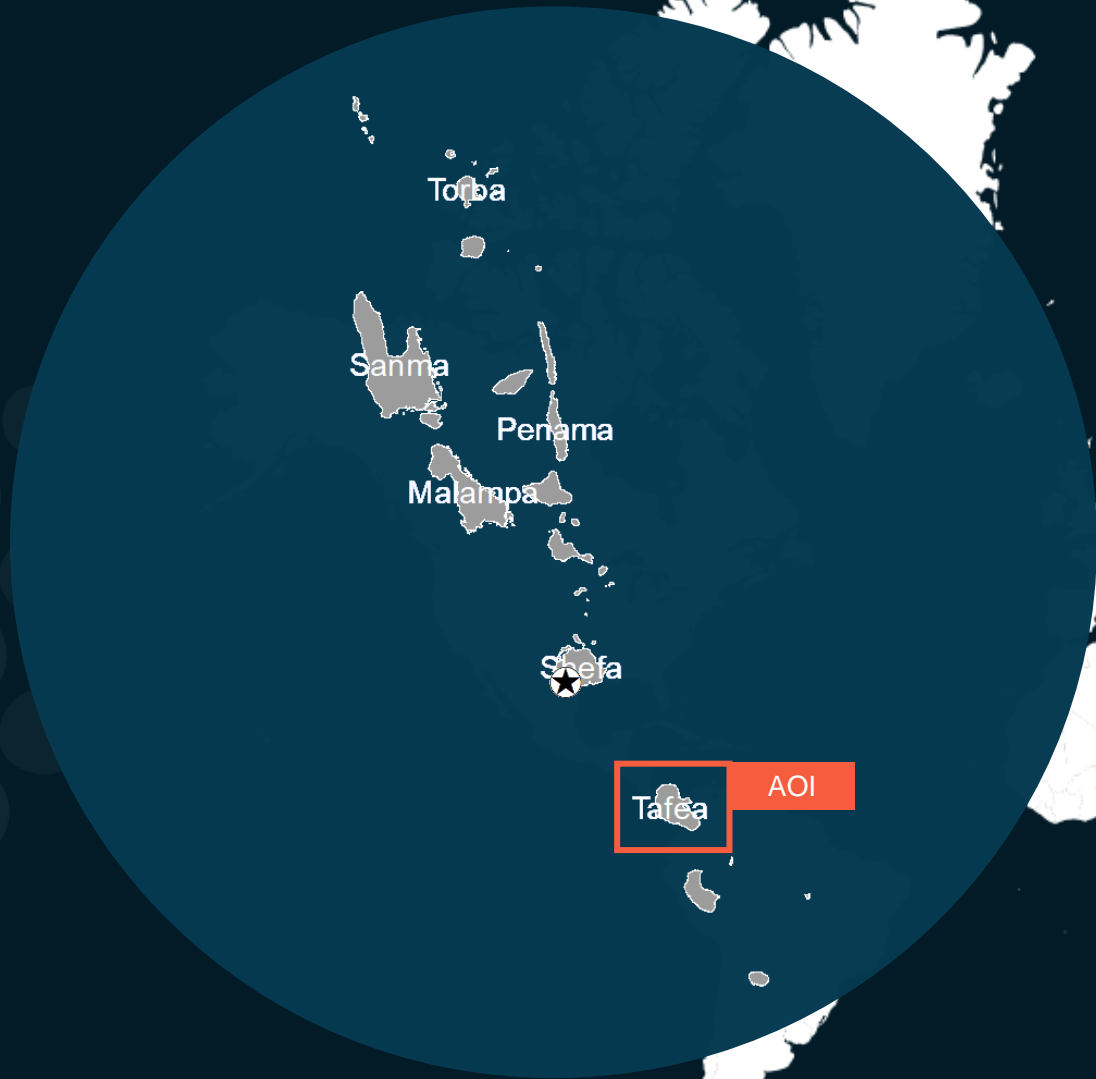




Dillon's Bay, Erromango Island, Tafea province, Vanuatu

 Status: Landslides, affected structures and damaged roads observed

 Further action(s): Continue monitoring

# VANUATU



-  Area of interest
-  Province boundary

# AOI 1- RUNTUOPONGIL VILLAGE, NORTH ERROMANGO COUNCIL, TAFEA PROVINCE

Landslides and damages along the river observed

Image center:  
169°1'46.038"E  
18°49'15.62"S



# AOI 1- UNPONGOR TOWN AND RUNTUOPONGIL VILLAGE, NORTH ERROMANGO COUNCIL, TAFEA PROVINCE



200 m



Landslide

~260 m

360 m



Landslide

~30 m



Damaged road

Washed away area

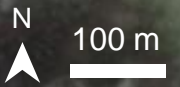


See enlarge image on next page

Williams River

Rantuopongil

Unpongor



GeoEye-1 image acquired on 11 Feb 2022  
Image Center : 169°1'42.525"E 18°49'6.505"S

# AOI 1- UNPONGOR TOWN AND RUNTUOPONGIL VILLAGE, NORTH ERROMANGO COUNCIL, TAFEA PROVINCE

See enlarge image on next page



Damaged road

~130 m

Landslide

250 m

~ 20 m

~ 30 m

Washed away area

100 m

Williams River

See enlarge image on next page

460 m

170 m

100 m



# AOI 1-1 - UNPONGOR TOWN, NORTH ERROMANGO COUNCIL, TAFEA PROVINCE



Metesons Guest House

Potentially damaged structure

Damaged road

Potentially damaged road

Damaged road

Williams River

~ 50 m ▲

~ 20 m ▲



30 m

GeoEye-1 image acquired on 11 Feb 2022  
Image Center : 169°1'19.243"E 18°49'9.394"S

# AOI 1-2 - RUNTUOPONGIL VILLAGE, NORTH ERROMANGO COUNCIL, TAFEA PROVINCE



damaged road

Washed away area

Williams River

Rantuopongil

Potentially affected structures



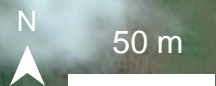
Inundated structures



Inundated structures

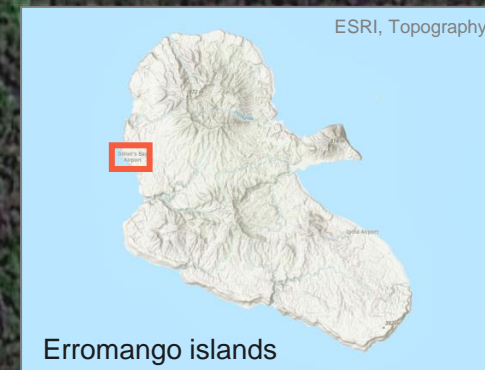


Inundated structures



GeoEye-1 image acquired on 11 Feb 2022  
Image Center : 169°1'32.296"E 18°49'16.337"S

# AOI 2- DILLON'S BAY, NORTH ERROMANGO COUNCIL, TAFEA PROVINCE



Affected shoreline



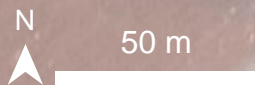
Potentially affected structures

Affected shoreline

Dillon's Bay

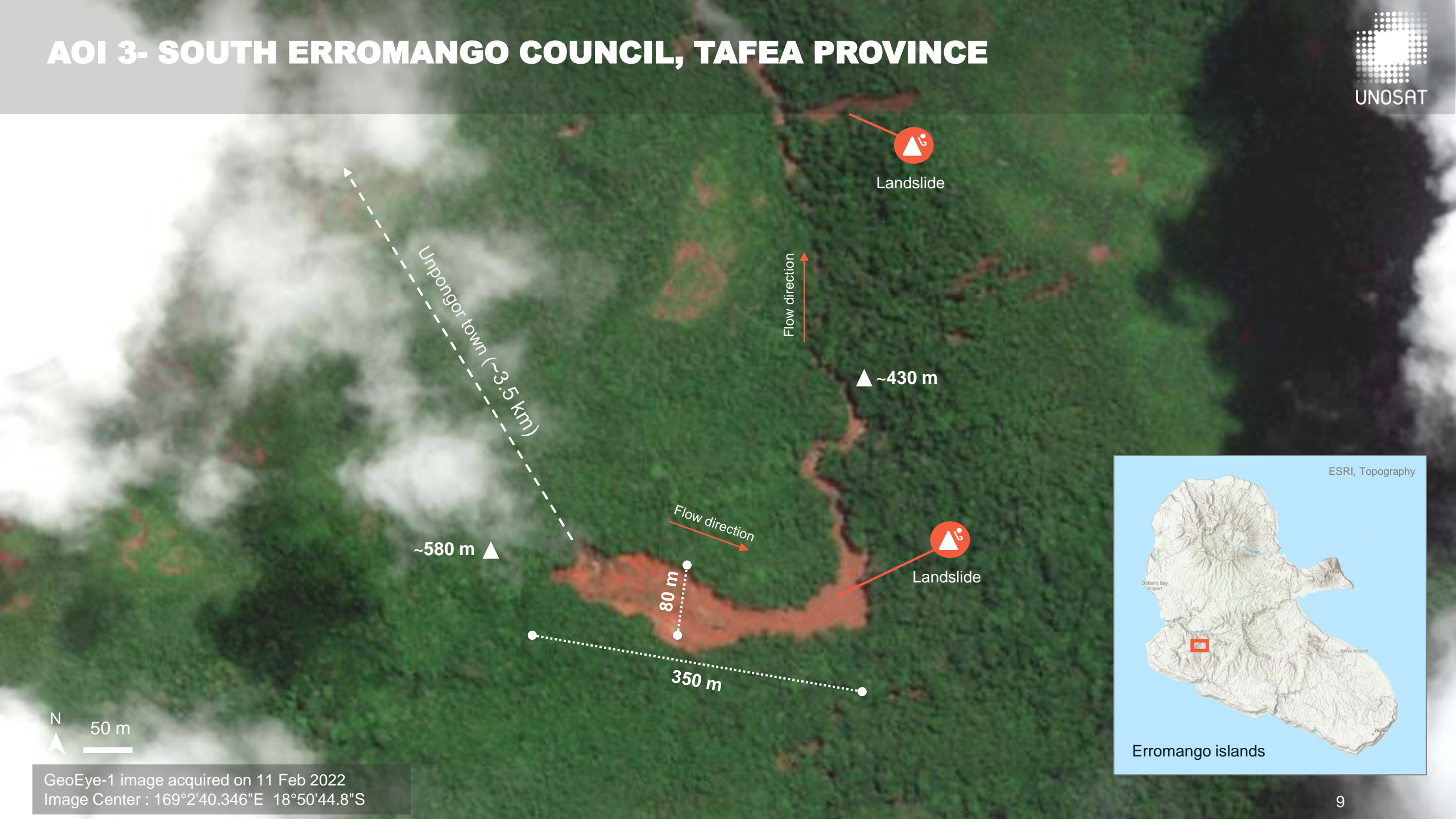
Dillons Bay Yacht Club - Guest house

Potentially affected structures



GeoEye-1 image acquired on 11 Feb 2022  
Image Center : 169°0'48.417"E 18°48'52.867"S

# AOI 3- SOUTH ERROMANGO COUNCIL, TAFEA PROVINCE



GeoEye-1 image acquired on 11 Feb 2022  
Image Center : 169°2'40.346"E 18°50'44.8"S

# SUMMARY OF FINDINGS

---

- Multiple landslides observed close to Unpongor town as of 11 February 2022
- Washed away area observed at 500m east of Unpongor along the William river as of 11 February 2022;
- Potentially damaged roads and potentially affected structures observed in Unpongor town as of 11 February 2022;
- Inundated structures observed in Runtuopongil village along the William river as of 11 February 2022;
- Affected area and potentially affected structures along the shoreline of Dillon's Bay observed as of as of 11 February 2022.

# COPYRIGHTS AND SOURCES

## Data sources:

### (1) Satellite Image (Post-event)

GeoEye-1 : 11 Feb 2022

Resolution: 50 cm

Copyright:© DigitalGlobe, Inc. (2022)

Source: USGS

### (2) Satellite Image (Pre-event)

Sentinel-2 : 11 Nov 2021

Resolution: 10 m

Copyright: Contains modified Copernicus Sentinel Data [2022]

Source: ESA

### (3) Ancillary data

Administrative boundaries: PopGIS2: Secretariat of the Pacific Community (SPC), Statistics for Development Division

Analysis: United Nations Satellite Centre (UNOSAT)

Production: United Nations Satellite Centre (UNOSAT)

 **@UNOSAT**

 **@UNITAR.unosat**



**UNOSAT**, United Nations Institute for Training  
and Research (UNITAR)  
7 bis, Avenue de la Paix, CH-1202 Geneva 2,  
Switzerland

T +41 22 917 4720  
E [unosat@unitar.org](mailto:unosat@unitar.org)  
[www.unosat.org](http://www.unosat.org)