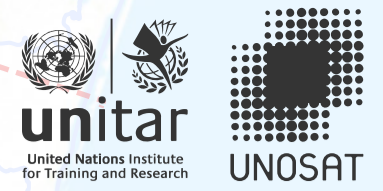


MADAGASCAR

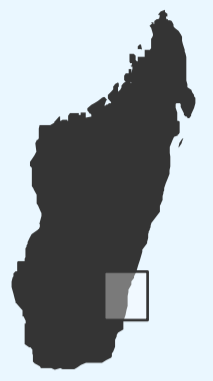
VATOVAVY FITOVINANY REGION



IMAGERY ANALYSIS: 08/02/2022 PUBLISHED 08/02/2022 V1.

<p>ANALYSED AREA</p> <p>3,800km²</p>	<p>FLOODS EXTENT</p> <p>210km²</p>	<p>POPULATION POTENTIALLY EXPOSED</p> <p>57,200</p>
-------------------------------------------------	-----------------------------------------------	-----------------------------------------------------

TROPICAL CYCLONE
TC20220201MDG



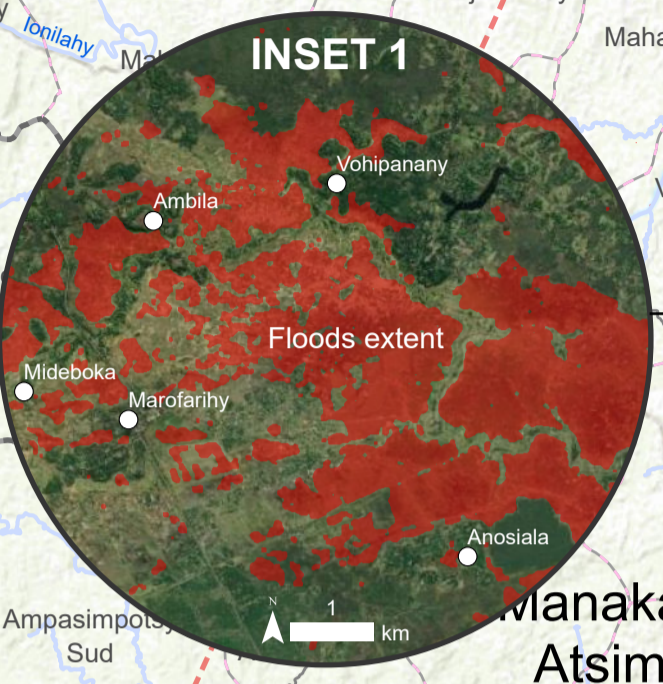
Satellite detected water extents in Vatoavy Fitovinany region, Madagascar as of 8 February 2022

This map illustrates satellite-detected surface waters in Vatoavy Fitovinany region, Madagascar as of 8 February 2022 at 05:20 local time. The flood analysis were carried out by using an automated analysis with Artificial Intelligence based methods.

Within the analyzed area of about 3,800 km², 210 km² of lands appear to be flooded. Based on Worldpop population data and the detected surface waters in the analyzed area, the potentially exposed population is 57,200 people mainly located in district of Vohipeno with ~ 30,000 people, and Manakara Atsimo with ~ 27,000 people,

This is a preliminary analysis and has not yet been validated in the field. Please send ground feedback to UNITAR-UNOSAT.

Important note: Flood analysis from radar images may underestimate the presence of standing waters in built-up areas and densely vegetated areas due to backscattering properties of the radar signal.



Legend

- City/Town
- Region boundary
- District boundary
- Commune boundary
- Secondary road
- Tertiary road
- River
- Analysis extent
- Reference water
- Satellite detect water [8 Feb 2022]

