

# NICARAGUA

## REGION AUTONOMA DEL ATLANTICO NORTE

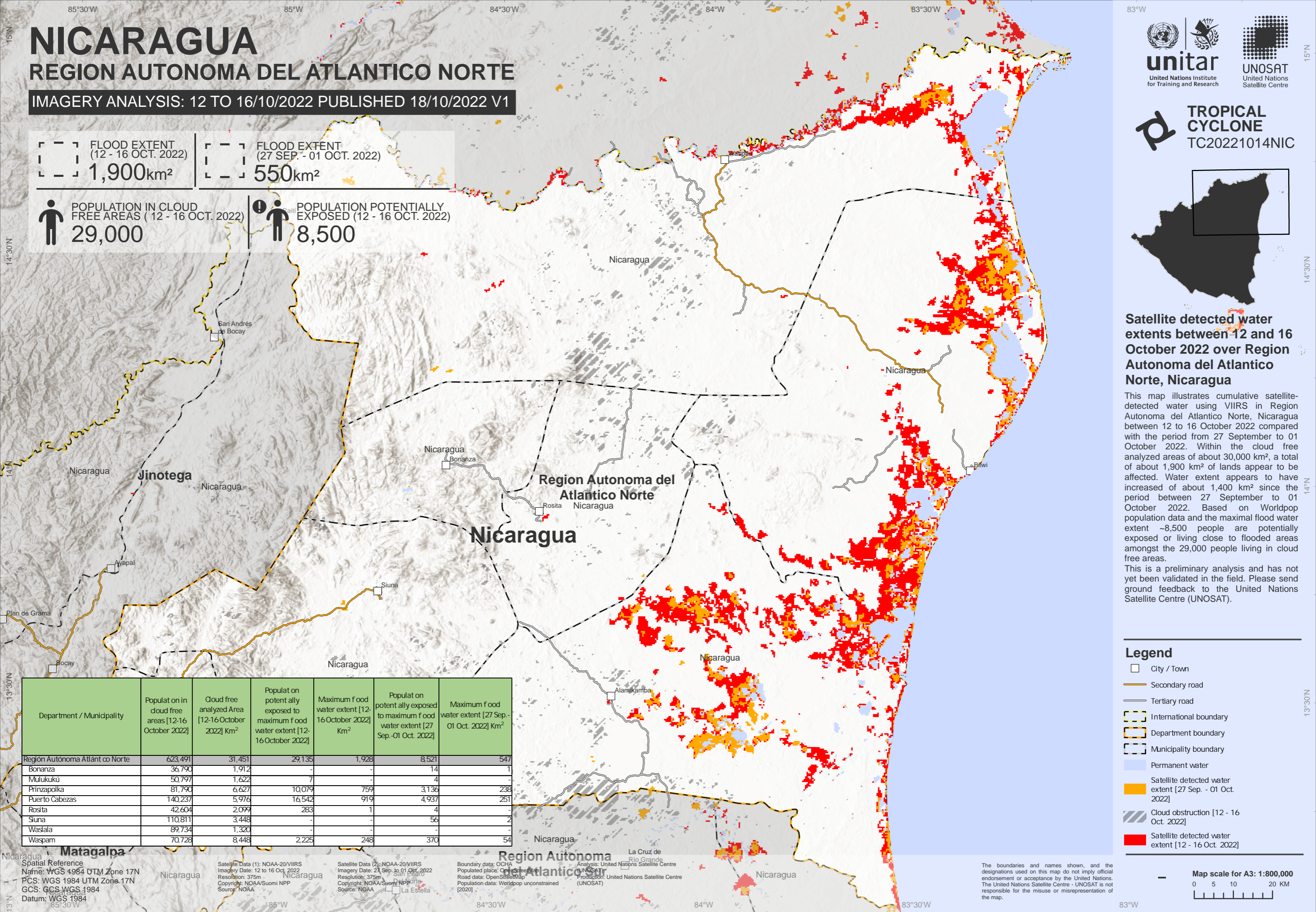
IMAGERY ANALYSIS: 12 TO 16/10/2022 PUBLISHED 18/10/2022 V1

FLOOD EXTENT  
(12 - 16 OCT. 2022)  
**1,900km<sup>2</sup>**

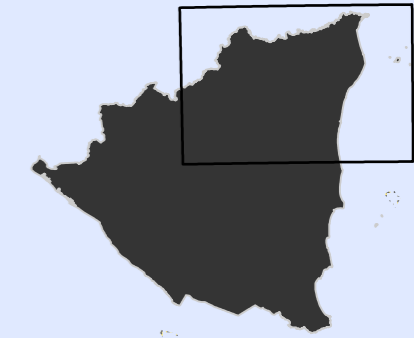
FLOOD EXTENT  
(27 SEP. - 01 OCT. 2022)  
**550km<sup>2</sup>**

POPULATION IN CLOUD  
FREE AREAS ( 12 - 16 OCT. 2022)  
**29,000**

POPULATION POTENTIALLY  
EXPOSED (12 - 16 OCT. 2022)  
**8,500**



**TROPICAL CYCLONE**  
TC20221014NIC



### Satellite detected water extents between 12 and 16 October 2022 over Region Autónoma del Atlántico Norte, Nicaragua

This map illustrates cumulative satellite-detected water using VIIRS in Region Autónoma del Atlántico Norte, Nicaragua between 12 to 16 October 2022 compared with the period from 27 September to 01 October 2022. Within the cloud free analyzed areas of about 30,000 km<sup>2</sup>, a total of about 1,900 km<sup>2</sup> of lands appear to be affected. Water extent appears to have increased of about 1,400 km<sup>2</sup> since the period between 27 September to 01 October 2022. Based on Worldpop population data and the maximal flood water extent -8,500 people are potentially exposed or living close to flooded areas amongst the 29,000 people living in cloud free areas.

This is a preliminary analysis and has not yet been validated in the field. Please send ground feedback to the United Nations Satellite Centre (UNOSAT).

#### Legend

- City / Town
- Secondary road
- Tertiary road
- International boundary
- Department boundary
- Municipality boundary
- Permanent water
- Satellite detected water extent [27 Sep. - 01 Oct. 2022]
- Satellite detected water extent [12 - 16 Oct. 2022]
- Cloud obstruction [12 - 16 Oct. 2022]

Department / Municipality	Populat on in cloud free areas [12-16 October 2022]	Cloud free analyzed Area [12-16 October 2022] Km <sup>2</sup>	Populat on potent ally exposed to maximum f ood water extent [12-16 October 2022]	Maximum f ood water extent [12-16 October 2022] Km <sup>2</sup>	Populat on potent ally exposed to maximum f ood water extent [27 Sep.-01 Oct. 2022]	Maximum f ood water extent [27 Sep.-01 Oct. 2022] Km <sup>2</sup>
Región Autónoma Atlántico Norte	623,491	31,451	29,135	1,928	8,521	547
Bonanza	36,790	1,912	-	-	14	1
Mulukuku	50,797	1,622	7	-	4	-
Prinzapolka	81,790	6,627	10,079	759	3,136	238
Puerto Cabezas	140,237	5,976	16,542	919	4,937	251
Rosita	42,604	2,099	283	1	4	-
Siuna	110,811	3,448	-	-	56	2
Waslala	89,734	-	-	-	-	-
Waspam	70,728	8,448	2,225	248	370	54

Spatial Reference  
Name: WGS 1984 UTM Zone 17N  
PCS: WGS 1984 UTM Zone 17N  
GCS: GCS\_WGS\_1984  
Datum: WGS 1984

Satellite Data (1): NOAA-20/VIIRS  
Imagery Date: 12 to 16 Oct. 2022  
Resolution: 375m  
Copyright: NOAA/Suomi NPP  
Source: NOAA

Satellite Data (2): NOAA-20/VIIRS  
Imagery Date: 27 Sep. to 01 Oct. 2022  
Resolution: 375m  
Copyright: NOAA/Suomi NPP  
Source: NOAA

Boundary data: OCHA  
Populated place: OpenStreetMap  
Road data: OpenStreetMap  
Population data: Worldpop unconstrained [2020]

Analysis: United Nations Satellite Centre  
UNOSAT  
Production: United Nations Satellite Centre  
(UNOSAT)

The boundaries and names shown, and the designations used on this map do not imply official endorsement or acceptance by the United Nations. The United Nations Satellite Centre - UNOSAT is not responsible for the misuse or misrepresentation of the map.

