

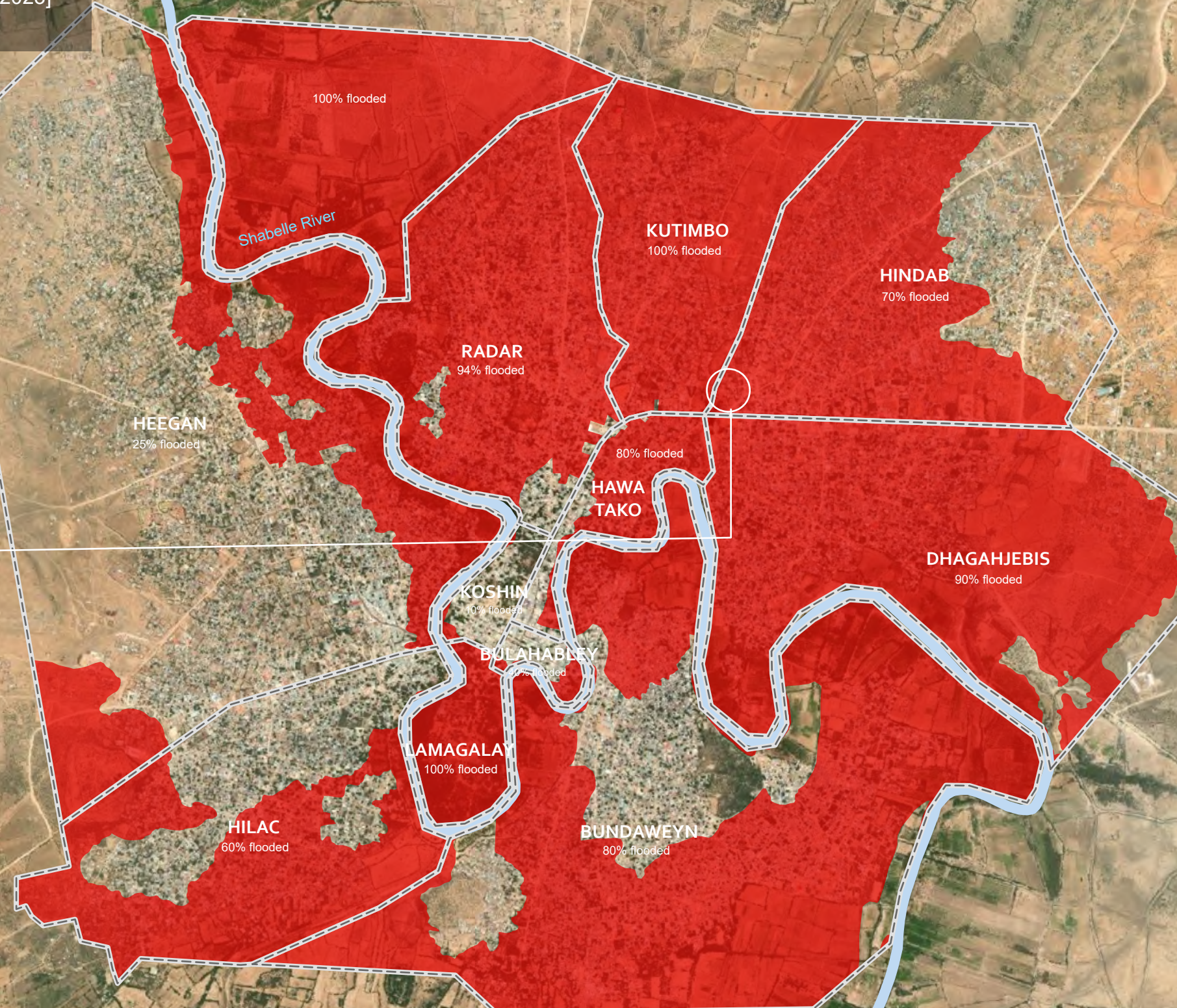
# SOMALIA

BELEDWEYNE, HIRAAN REGION, SOMALIA

IMAGERY ANALYSIS: 12&25/05/2023 PUBLISHED 25/05/2023 V1

ANALYSED  
CLOUD FREE AREA  
19km<sup>2</sup>

FLOOD EXTENT  
[12&25 MAY 2023]  
13km<sup>2</sup>



 **FLOOD**  
FL20230327SOM



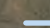

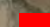
## Satellite detected cumulative water over Beledweyne City, Hiraan Region of Somalia between 12 and 25 May 2023

This map illustrates the cumulative satellite-detected water affected sectors of Beledweyne City in Hiiran Region, Somalia as detected from the analysis of a satellite Jilin-1 images acquired on 12 May 2023 and Pleiades acquired on 25 May 2023.

Beledweyne is heavily affected by floods and about 67% of the town and its vicinity is largely inundated; the sectors called Kutimbo Neighborhood and Lamagalay Regional Military Base appear to be the most affected by floodwaters.

This is a preliminary analysis and has not yet been validated in the field. Please send ground feedback to United Nations Satellite Centre (UNOSAT).

## Legend

-  River
-  Neighbourhood boundary
-  Satellite detected water [12 & 25 May 2023]



Map Scale for A3: 1:22,000

0 150 300 600 m