

# SOMALIA

## HIRAAN REGION AND JOWHAR CITY, MIDDLE SHABELLE REGION

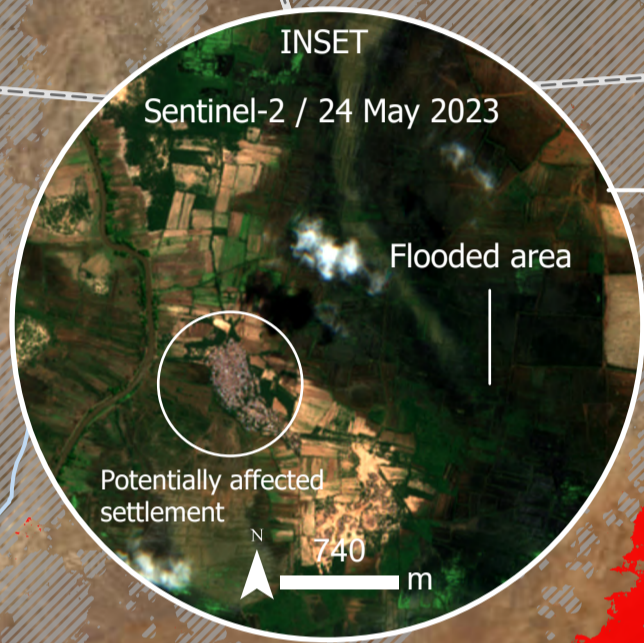
IMAGERY ANALYSIS: 24/05/2023 PUBLISHED 26/05/2023 V1

ANALYSED CLOUD FREE AREA [24 May 2023]  
6,800km<sup>2</sup>

FLOOD EXTENT [24 May 2023]  
430km<sup>2</sup>

POPULATION POTENTIALLY EXPOSED [24 May 2023]  
47,000

**FLOOD**  
FL20230327SOM



**Satellite detected water extent over southern Hiraan Region and Jowhar City, Middle Shabelle Region, Somalia as of 24 May 2023**

This map illustrates satellite-detected surface waters over southern Hiraan Region and Jowhar City, Middle Shabelle Region, Somalia observed from a Sentinel-2 image acquired on 24 May 2023 at 07:28 UTC. Within the analysed area of 8,600km<sup>2</sup>, about 430 km<sup>2</sup> of land appear to be flooded.

Based on Worldpop population data and the detected surface waters in the analysed area, at least 47,000 people are potentially exposed or living close to flooded areas.

This is a preliminary analysis and has not yet been validated in the field. Please send ground feedback to United Nations Satellite Centre (UNOSAT).

Region / District	Analyzed cloud free area [km2]	Flood extent as of 24 May 2023 [km2]	Population in cloud free areas	Population Potentially Exposed to Floods as of 24 May 2023
<b>Hiraan</b>	<b>2,444</b>	<b>30</b>	<b>47,210</b>	<b>1,739</b>
Bulo Burto	605	-	7,305	4
Jalalaqsi	1,840	30	39,905	1,735
<b>Lower Shabelle</b>	<b>1,101</b>	<b>3</b>	<b>37,557</b>	<b>90</b>
Afgooye	66	1	3,681	27
Wanla Weyn	1,035	3	33,876	62
<b>Middle Shabelle</b>	<b>3,271</b>	<b>401</b>	<b>258,958</b>	<b>45,400</b>
Balcad	214	19	16,846	1,617
Cadale	172	-	1,548	-
Jowhar	2,885	381	240,563	43,783
<b>Total</b>	<b>6,815</b>	<b>434</b>	<b>343,725</b>	<b>47,228</b>

- Legend**
- City / Town
  - River
  - Road
  - District boundary
  - Cloud obstruction [24 May 2023]
  - Satellite detected water [24 May 2023]

Spatial Reference Name: WGS 1984 UTM Zone 38N  
 Projection: Transverse Mercator  
 Satellite Imagery (1): Sentinel-2  
 Imagery Date: 24 May 2023  
 Resolution: 10 m  
 Copyright: Contains modified Copernicus Sentinel data (2023)  
 Source: ESA

Population data: WorldPop Unconstrained (2020)  
 Populated place: OpenStreetMap  
 Road data: OpenStreetMap  
 Background: ESRI World Imagery

Analysis: United Nations Satellite Centre (UNOSAT) - Contains modified ESA Charter Mapper processing services  
 Production: United Nations Satellite Centre (UNOSAT)

The boundaries and names shown, and the designations used on this map do not imply official endorsement or acceptance by the United Nations. The United Nations Satellite Centre - UNOSAT is not responsible for the misuse or misrepresentation of the map.



Map Scale for A3: 1:750,000  
 0 1.75 3.5 7 KM