

OCCUPIED PALESTINIAN TERRITORY

GAZA STRIP

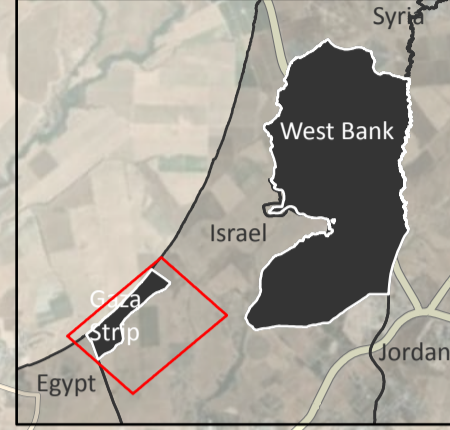
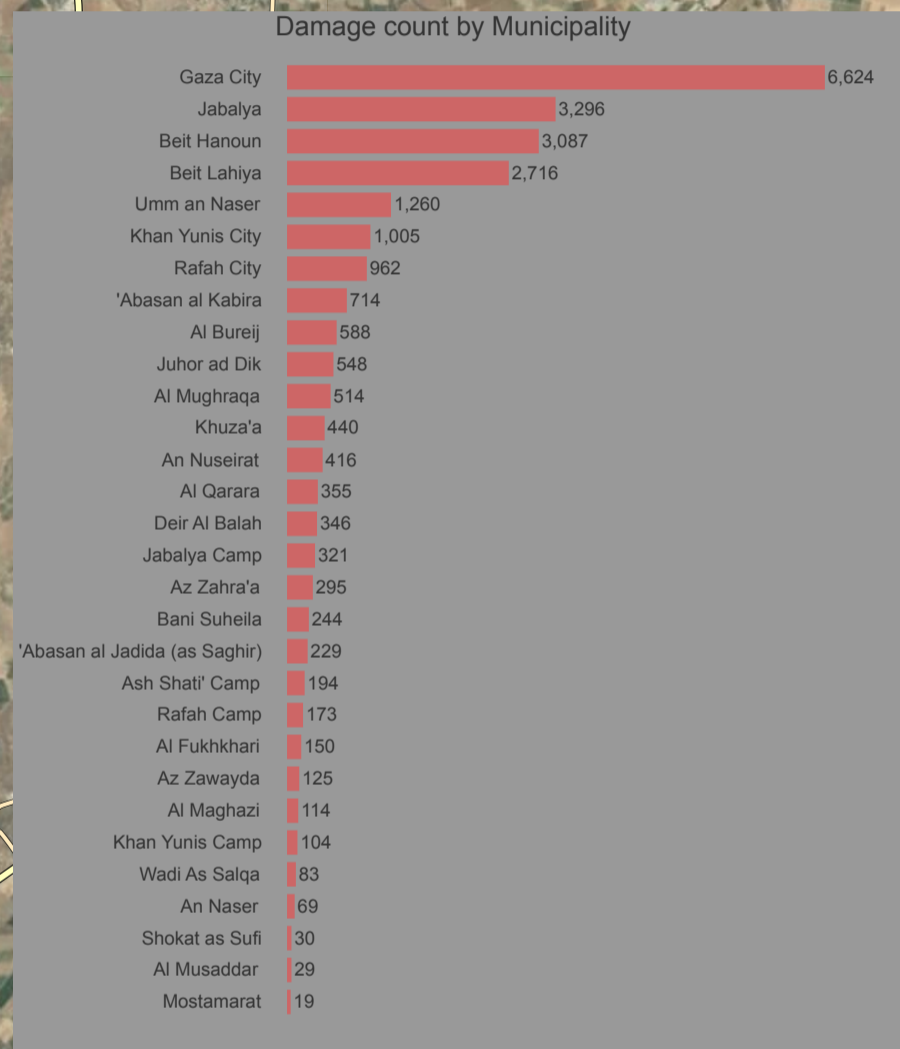
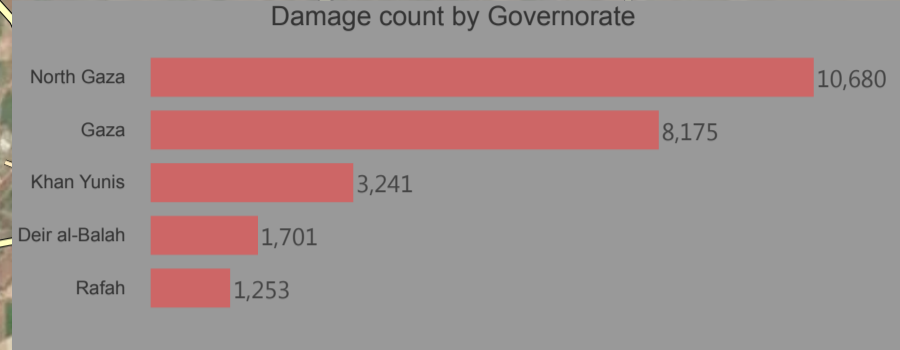
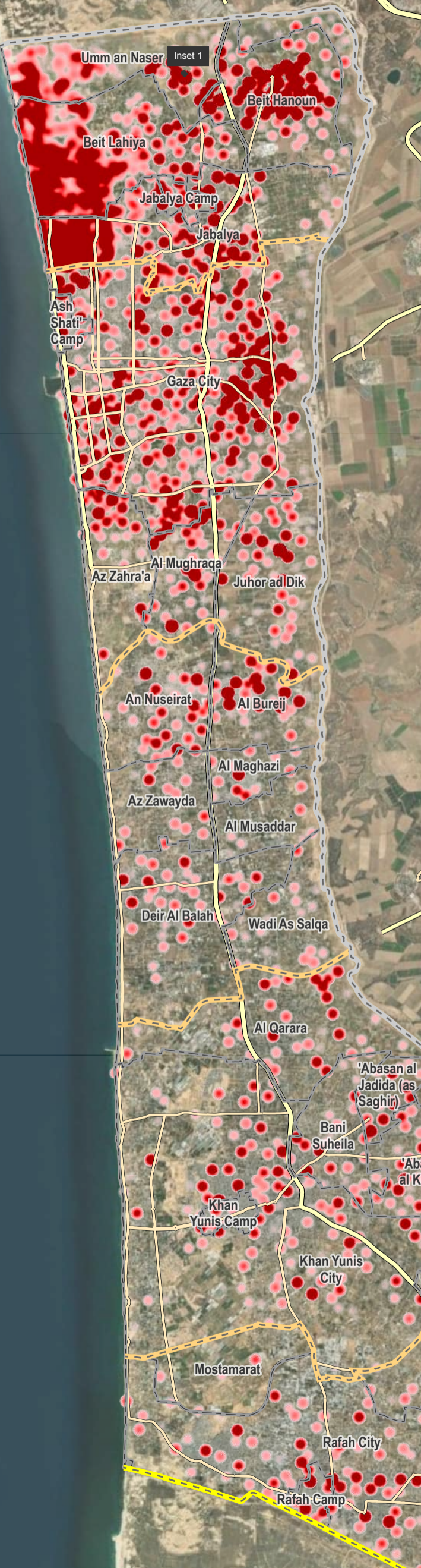
IMAGERY ANALYSIS: 7 NOVEMBER 2023 / PUBLISHED: 13 November 2023 / V2



COMPLEX EMERGENCY
CE20231007PSE

AREA OF INTEREST
361 km²

DAMAGED BUILDINGS
25050



UNOSAT Damage Assessment Overview Map

This map illustrates a satellite-imagery based comprehensive damage assessment to detect damage and destruction to structures within the area of interest in the Gaza Strip, Occupied Palestinian Territory, based on an image collected on 7 November 2023 when compared to images collected on 1 May 2023, 10 May 2023, 18 September 2023, and 15 October 2023. According to satellite imagery analysis, UNOSAT identified 6,583 destroyed structures, 6,062 severely damaged structures and 12,405 moderately damaged structures, for a total of 25,050 structures. This corresponds to approximately 10 per cent of the total structures in the Gaza Strip. The areas most affected by damage are the governorates of North Gaza and Gaza. Between 15 October and 7 November, there was an increase in the number of damaged buildings by approximately 137 per cent. From 15 October to 7 November 2023, the neighborhood of Al Qaraya al Badawiya al Maslakh in North Gaza has seen a notable increase in damage (see inset 1). This is a preliminary analysis and has not yet been validated in the field.



Legend

- Primary road
- Secondary road
- Armistice Demarcation Line
- International boundary
- Governorate boundary
- Municipality boundary

Damage density

- Sparse
- Dense

Damage assessment

- Destroyed
- Severely damaged
- Moderately damaged

The boundaries and names shown and the designations used on this map do not imply official endorsement or acceptance by the United Nations.