

# DEMOCRATIC REPUBLIC OF THE CONGO

## KINSHASA PROVINCE

IMAGERY ANALYSIS: 28/12/2023 PUBLISHED 02/01/2024 V1.



ANALYSED AREA ~44,000 ha	FLOOD EXTENT IN CLOUD FREE AREA ~460 ha	LANDSLIDE EXTENT IN CLOUD FREE AREA ~3 ha	POPULATION POTENTIALLY EXPOSED ~25,000
-----------------------------	--	--	---

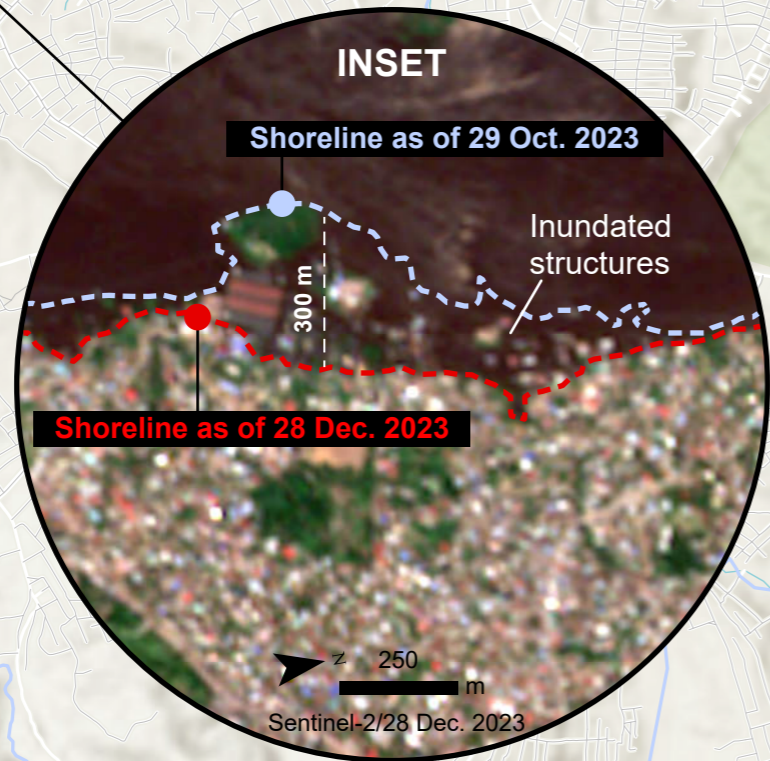
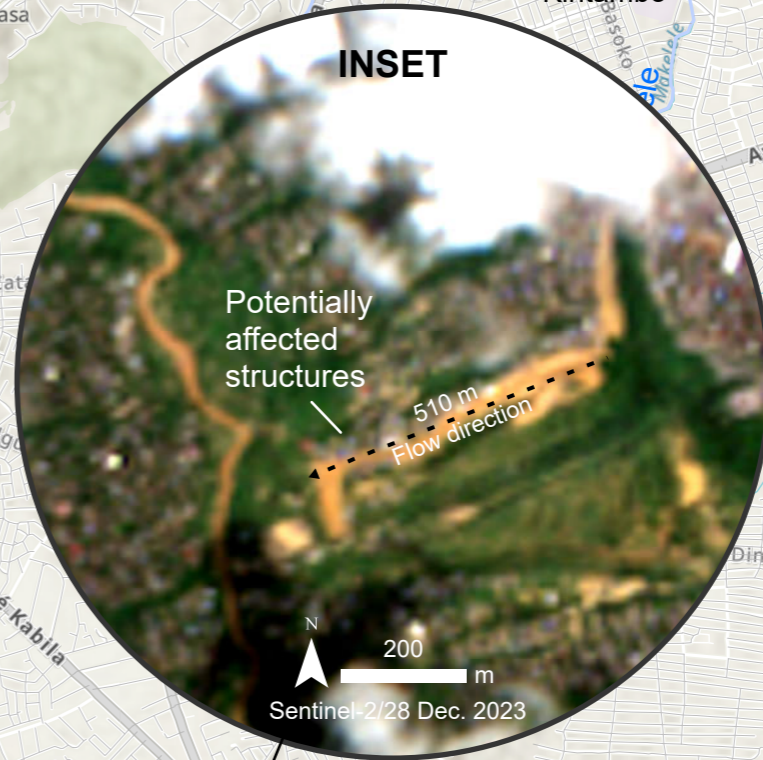
**FLOOD**  
FL20231229COD



CONGO

# DEMOCRATIC REPUBLIC OF THE CONGO

Kinshasa



**Satellite detected water and landslide extents in Kinshasa Province, Democratic Republic of The Congo as of 28 December 2023**

This map illustrates satellite-detected surface waters and landslides in Kinshasa Province, Democratic Republic of The Congo, as observed from a Sentinel-2 image acquired on 28 December 2023, at 10:21 local time. Within the analysed area of 44,000 ha, approximately 3 ha of landslide scars are observed and about 460 ha of land appear to be flooded. Based on Worldpop population data, the detected surface waters and the landslide scar extent, about 25,000 people are potentially exposed or living close to landslide and flooded areas.

This is a preliminary analysis and has not yet been validated in the field. Please provide ground feedback to the United Nations Satellite Centre (UNOSAT).

### Legend

- City/Town
- Landslide
- Road
- River
- Cloud obstruction [28 Dec. 2023]
- Satellite detected water [29 Oct. 2023]
- Satellite detected water [28 Dec. 2023]
- Landslide extent [28 Dec. 2023]

Spatial Reference  
Name: WGS 1984 UTM Zone 33S  
PCS: WGS 1984 UTM Zone 33S  
GCS: GCS WGS 1984  
Datum: WGS 1984

Satellite Data : Sentinel-2  
Imagery Date: 28 December 2023 at 09:21 UTC  
Resolution: 10 m  
Copyright: Contains modified Copernicus Sentinel Data [2023]  
Source: ESA

Satellite Data : Sentinel-2  
Imagery Date: 29 October 2023 at 09:21 UTC  
Resolution: 10 m  
Copyright: Contains modified Copernicus Sentinel Data [2023]  
Source: ESA

Waterways: OpenStreetMap  
Populated place: OpenStreetMap  
Road data: OpenStreetMap  
Population data: Worldpop Unconstrained UN Adjust [2020]  
Boundary data: Referenciel Géographique Commun  
Background: ESRI/Mapbox

Analysis: United Nations Satellite Centre (UNOSAT)  
Production: United Nations Satellite Centre (UNOSAT)

The boundaries and names shown, and the designations used on this map do not imply official endorsement or acceptance by the United Nations. The United Nations Satellite Centre (UNOSAT) is not responsible for the misuse or misrepresentation of the map.

Map scale for A3: 1:36,000  
0 0.25 0.5 1 KM