

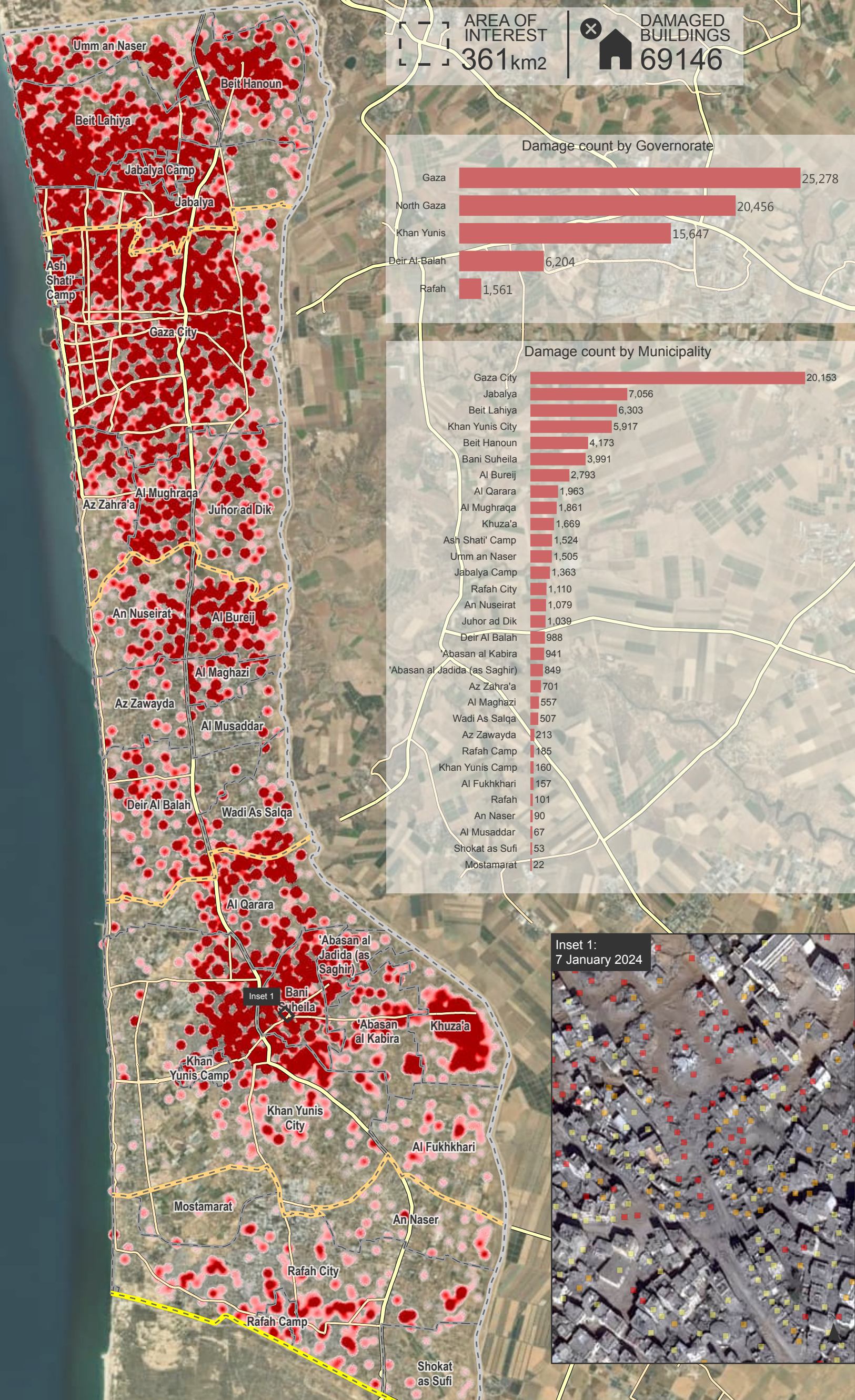
# OCCUPIED PALESTINIAN TERRITORY

## GAZA STRIP

IMAGERY ANALYSIS: 6-7 January 2024 / PUBLISHED: 07 February 2024 / V2



**COMPLEX  
EMERGENCY**  
CE20231007PSE



### UNOSAT Damage Assessment Overview Map

This map illustrates a satellite-imagery based comprehensive assessment of damage and destruction to structures within the area of interest in the Gaza Strip, Occupied Palestinian Territory, based on images collected on 6 and 7 January 2024 when compared to images collected on 1 May 2023, 10 May 2023, 18 September 2023, 15 October 2023, 7 November 2023, and 26 November 2023. According to satellite imagery analysis, UNOSAT identified 22,130 destroyed structures, 14,066 severely damaged structures and 32,950 moderately damaged structures, for a total of 69,146 structures. These correspond to around 30% of the total structures in the Gaza Strip and a total of 93,800 estimated damaged housing units. The governorates of Gaza and Khan Yunis have experienced the highest rise in damage, with 10,319 new structures damaged in Gaza and 11,893 in Khan Yunis. Gaza City had the highest number of newly destroyed structures, with 8,926 in total. This is a preliminary analysis and has not yet been validated in the field.

### Legend

- Primary road
- Secondary road
- Armistice Demarcation Line
- International boundary
- Governorate boundary
- Municipality boundary
- Damage density
  - Sparse
  - Dense
- Damage assessment
  - Destroyed
  - Severely damaged
  - Moderately damaged

The boundaries and names shown and the designations used on this map do not imply official endorsement or acceptance by the United Nations.

Map scale for A3: 1:125,000  
0 0.5 1 2 KM