

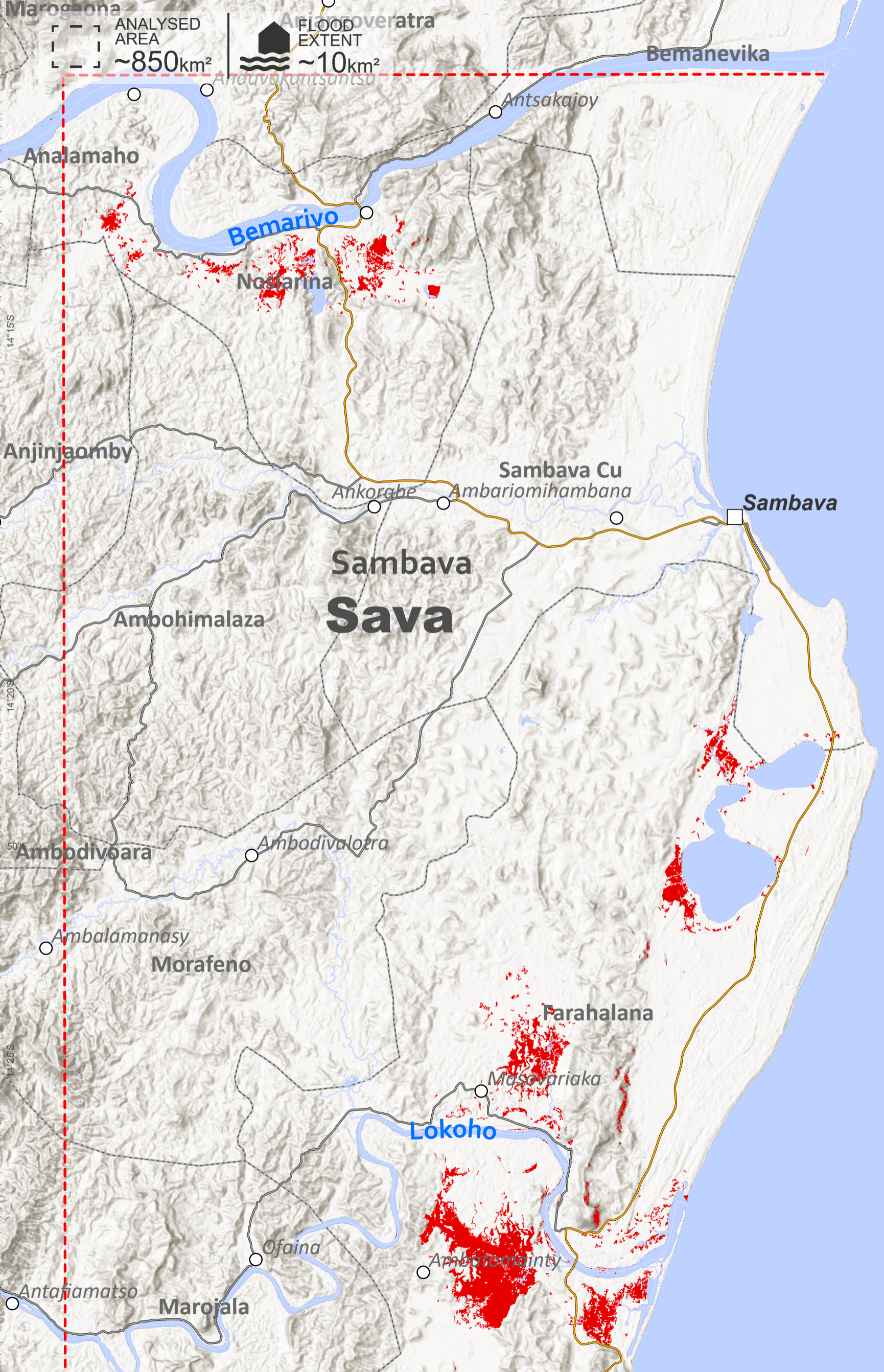
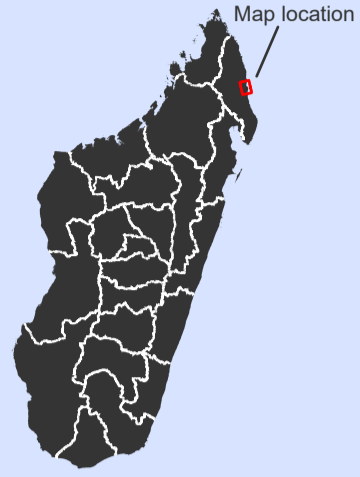
# MADAGASCAR

## SAMBAVA & VOHEMAR DISTRICTS, SAVA REGION

IMAGERY ANALYSIS: 01/04/2024 PUBLISHED 04/04/2024 V1



**TROPICAL CYCLONE**  
TC20240328MDG



**Satellite detected water extent over Sambava and Voahemmar Districts, Sava Region, Madagascar, as of 01 April 2024**

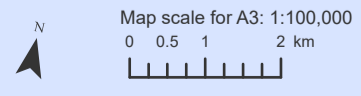
This map illustrates satellite-detected water extent in Sambava and Voahemmar Districts, Sava Region, Madagascar as observed from a TanDEM-X satellite image acquired on 01 April 2024 at 18:09 local time (15:09 UTC). Within the analysed area of about 850 km<sup>2</sup>, a total of about 10 km<sup>2</sup> of lands appear to be affected with flood waters.

This is a preliminary analysis and has not yet been validated in the field. Please send ground feedback to the United Nations Satellite Centre (UNOSAT).

Important note: Flood analysis from radar images may underestimate the presence of standing waters in built-up areas and densely vegetated areas due to backscattering properties of the radar signal.

### Legend

- City / Town
- Village
- Analysis extent
- Region boundary
- District boundary
- Commune boundary
- Primary road
- Secondary road
- Tertiary road
- Permanent water
- Satellite detected water [01 Apr. 2024]



Spatial Reference  
Name: WGS 1984 UTM Zone 39S  
PCS: WGS 1984 UTM Zone 39S  
GCS: GCS WGS 1984

Satellite Imagery: TanDEM-X  
Imagery Date: 01 April 2024, 15:09 UTC  
Resolution: 3m  
Copyright: © DLR e.V. (2024), Distribution Airbus DS  
Geo GmbH  
Source: DLR  
Boundary data: UNOCHA FISS, HDX

Waterways: OpenStreetMap  
Road data: OpenStreetMap  
Populated place: OpenStreetMap  
Population data: Worldpop unconstrained [2020]  
Landcover data: © ESA WorldCover project [2021]  
Contains modified Copernicus Sentinel data [2021], processed by ESA WorldCover consortium

Analysis: United Nations Satellite Centre (UNOSAT)  
Production: United Nations Satellite Centre (UNOSAT)

The boundaries and names shown, and the designations used on this map do not imply official endorsement or acceptance by the United Nations. The United Nations Satellite Centre - UNOSAT is not responsible for the misuse or misrepresentation of the map.