

OCCUPIED PALESTINIAN TERRITORY

1 KM STRETCH OF LAND FROM THE ARMISTICE LINE, GAZA STRIP

IMAGERY ANALYSIS: 29 February 2024 / PUBLISHED: 09 April 2024 / V1



UNOSAT Comprehensive Damage Assessment

This map illustrates a satellite-imagery based comprehensive damage assessment (CDA) to detect damage and destruction within a stretch of land 1 km from the Armistice Demarcation Line in the Gaza Strip, Occupied Palestinian Territory. This analysis includes a CDA from several dates, including 15 October 2023, 7 November 2023, 26 November 2023, 7 January 2024 and 29 February 2024.

Statistical analysis shows the rapid increase in damaged and destroyed buildings within the zone, from 15% to 90% between October 2023 and February 2024. Satellite-derived analysis undertaken on 29 February 2024 on 4,042 buildings within the zone, shows 3,033 destroyed, 593 damaged (severely or moderately damaged) and 416 with no visible damage.

This is a preliminary analysis and has not yet been validated in the field.

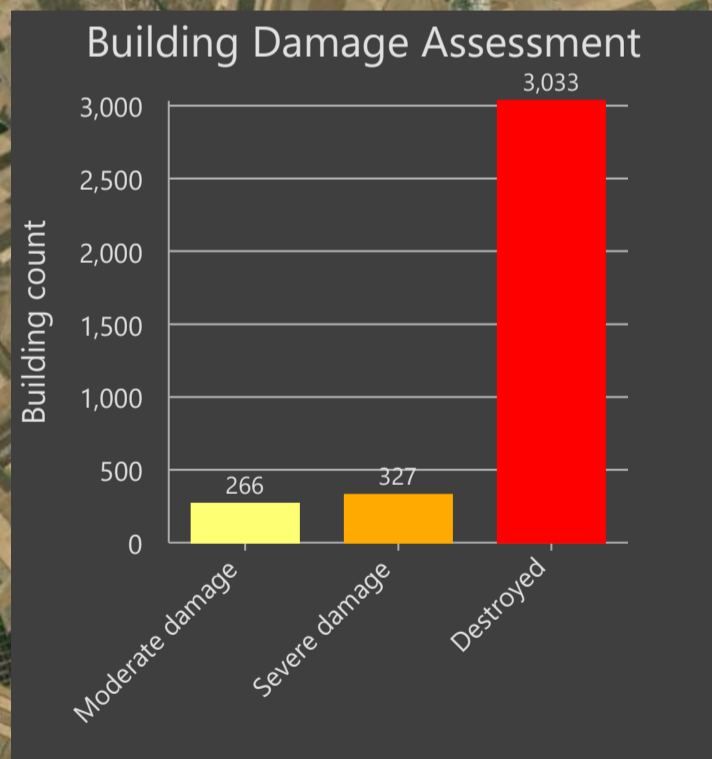
Legend

- Damage Assessment
- Damage level
- Destroyed
 - Severe Damage
 - Moderate Damage
 - Armistice Demarcation Line
 - International boundary
 - Governorate boundary

INSET 1: Gaza Industrial Estate, Gaza Governorate



INSET 2: Destroyed buildings, Khan Younis Governorate



Satellite derived analysis dates	15-Oct-23	7-Nov-23	26-Nov-23	7-Jan-24	29-Feb-24
Total Destroyed	183	656	867	2454	3033
Total Damaged	409	844	847	607	593
Total No Visible Damage	3449	2541	2327	980	416
% affected buildings	15%	37%	42%	76%	90%

The boundaries and names shown and the designations used on this map do not imply official endorsement or acceptance by the United Nations.

Map scale for A3: 1:160,000
0 0.75 1.5 3 KM