

# OCCUPIED PALESTINIAN TERRITORY

## 1 KM STRETCH OF LAND FROM THE ARMISTICE LINE, GAZA STRIP

IMAGERY ANALYSIS: 21 February 2024 / PUBLISHED: 11 April 2024 / V1



**COMPLEX EMERGENCY**  
CE20231007PSE



### UNOSAT Agricultural Assessment

This map illustrates satellite-detected changes in agricultural areas in a stretch of land 1 km from the Armistice Demarcation Line in the Gaza Strip, Occupied Palestinian Territory. UNOSAT conducted an analysis utilising Sentinel-2 satellite imagery captured between January 2018 and 2024, performing a Normalised Difference Vegetation Index (NDVI) analysis as well as a multi-temporal classification to identify notable changes in agricultural areas during that time frame. The decline in the health and density of the crops can be observed due to the impact of activities such as razing, heavy vehicle activity, bombing, shelling, and other conflict-related dynamics. The analysis includes damage assessment for permanent crop fields, arable land, and fallow lands.

UNOSAT analysis and statistics presented show the damaged agricultural area in sq km, percentage and percentage change for only the area contained within the zone. Statistical analysis shows an increase on the percentage of damaged agricultural land in October 2023 from 5.36% to 33.13% of damaged land in February 2024.

### Legend

Damaged agricultural land  
■ February 2024  
■ October 2023

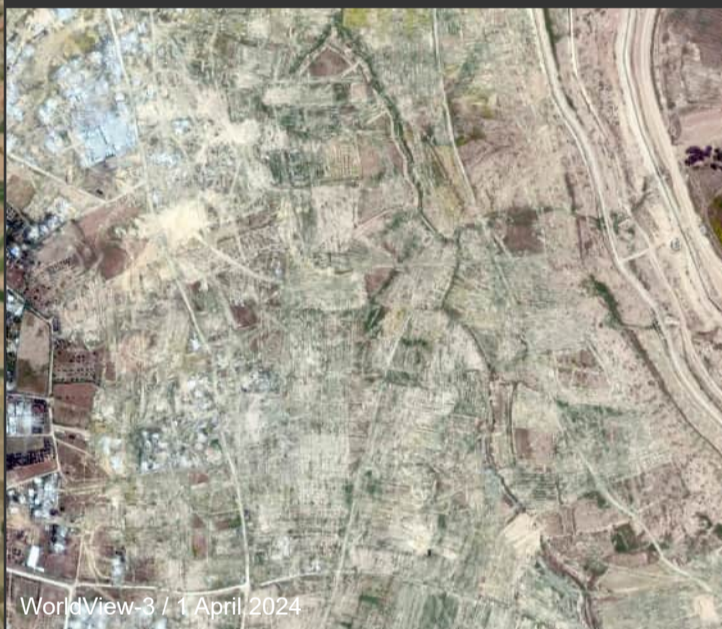
--- Armistice Demarcation Line  
--- International boundary  
--- Governorate boundary

The boundaries and names shown and the designations used on this map do not imply official endorsement or acceptance by the United Nations.

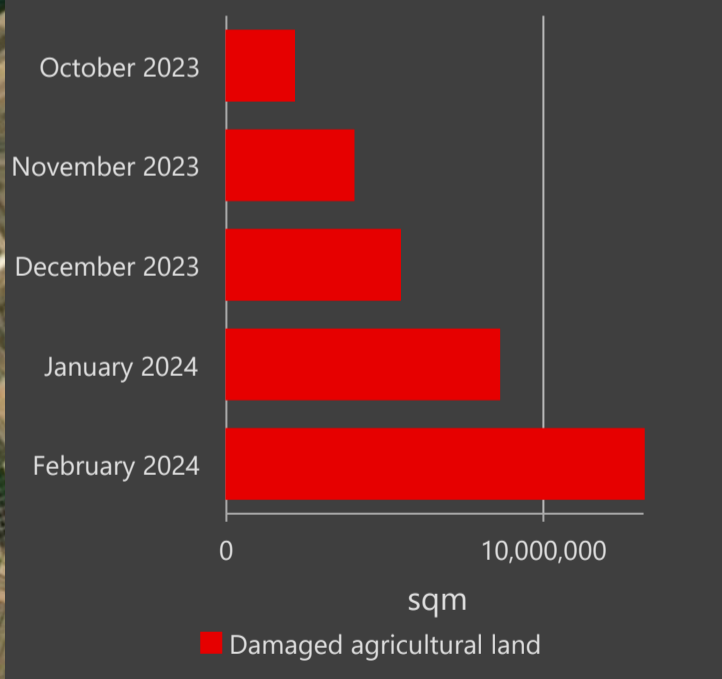
INSET 1: Damaged agricultural land, Deir al-Balah Governorate



INSET 2: Damaged agricultural land, Khan Younis Governorate



### Damaged Agricultural Land



	October 2023	November 2023	December 2023	January 2024	February 2024
Area (km <sup>2</sup> )	2.131	4.007	5.472	8.601	13.163
%	5.36%	10.08%	13.77%	21.64%	33.13%
% Change		88.03%	36.56%	57.18%	53.04%

Spatial Reference  
 Name: WGS 1984 Web Mercator Auxiliary Sphere  
 PCS: WGS 1984 Web Mercator Auxiliary Sphere  
 GCS: GCS WGS 1984  
 Datum: WGS 1984

Satellite Imagery (1): Sentinel-2  
 Imagery Date: December 2017-2024  
 Resolution: 10 m  
 Copyright: Contains modified Copernicus  
 Sentinel data [2024]  
 Source: European Space Agency

Satellite Imagery (2): WorldView-3  
 Imagery Date: 1 April 2024  
 Resolution: 30 cm  
 Copyright: © Maxar 2023  
 Source: Department of State, Humanitarian  
 Information Unit

Boundaries: OCHA oPt  
 Agricultural data: PCBS, FAO

Analysis: United Nations Satellite Centre (UNOSAT)  
 Production: United Nations Satellite Centre (UNOSAT)

Map scale for A3: 1:160,000  
 0 0.75 1.5 3 KM