

# OCCUPIED PALESTINIAN TERRITORY

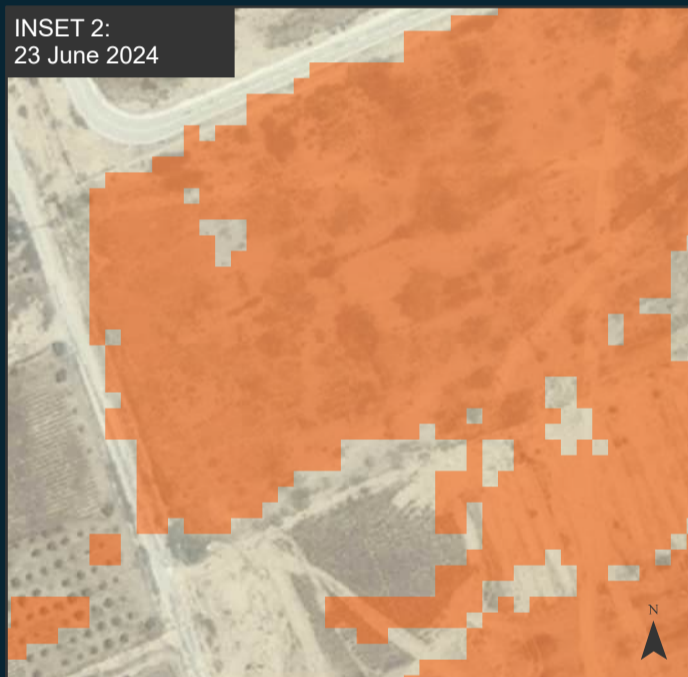
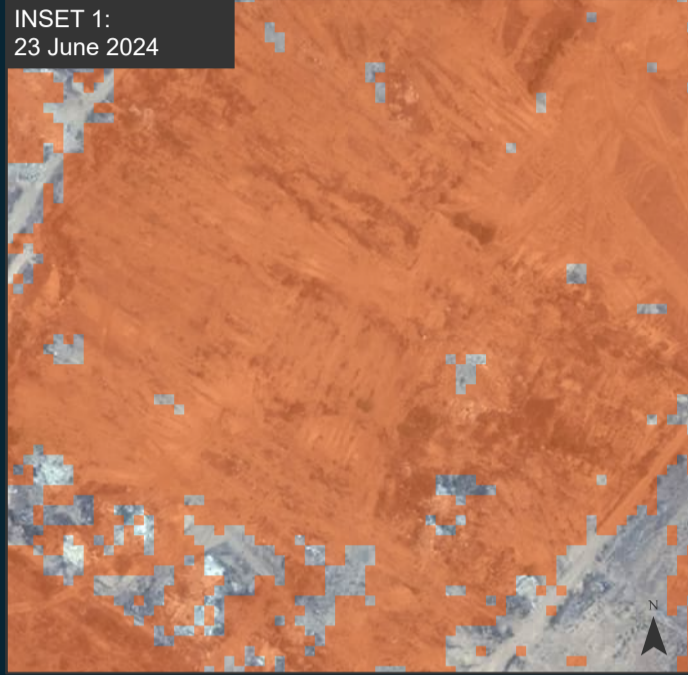
## GAZA STRIP

IMAGERY ANALYSIS: 28 July 2024 / PUBLISHED: 31 July 2024 / V1

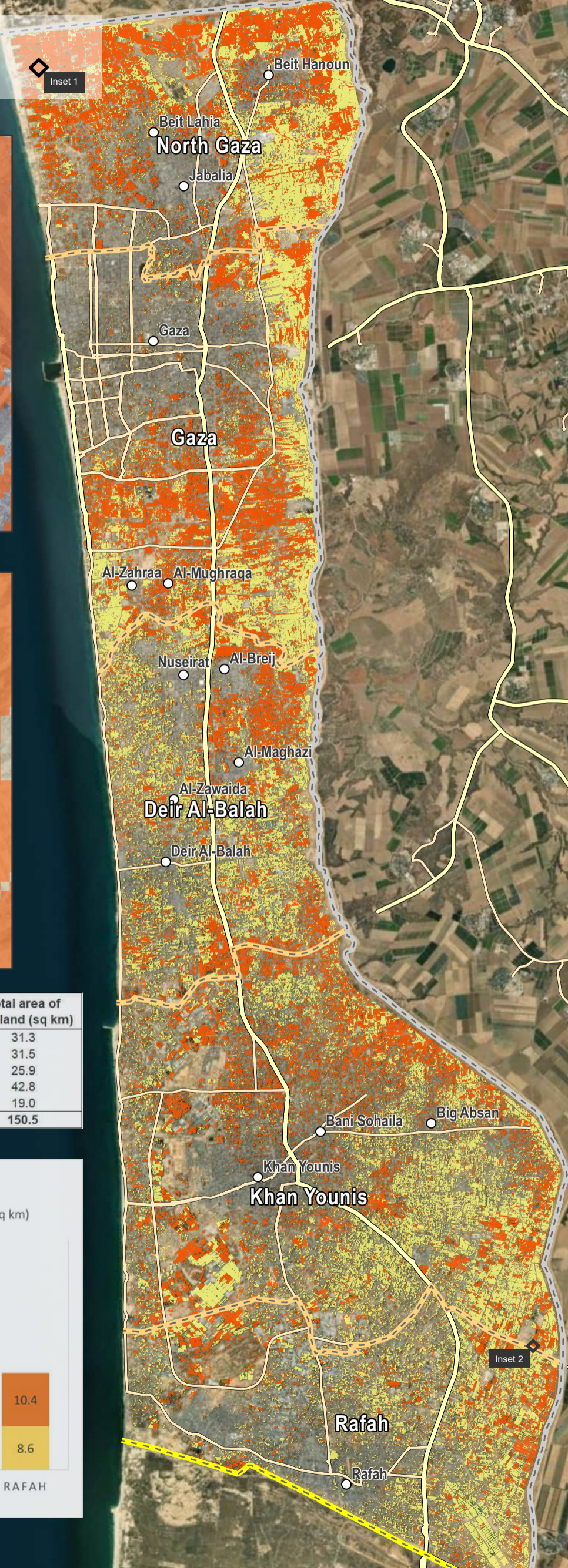
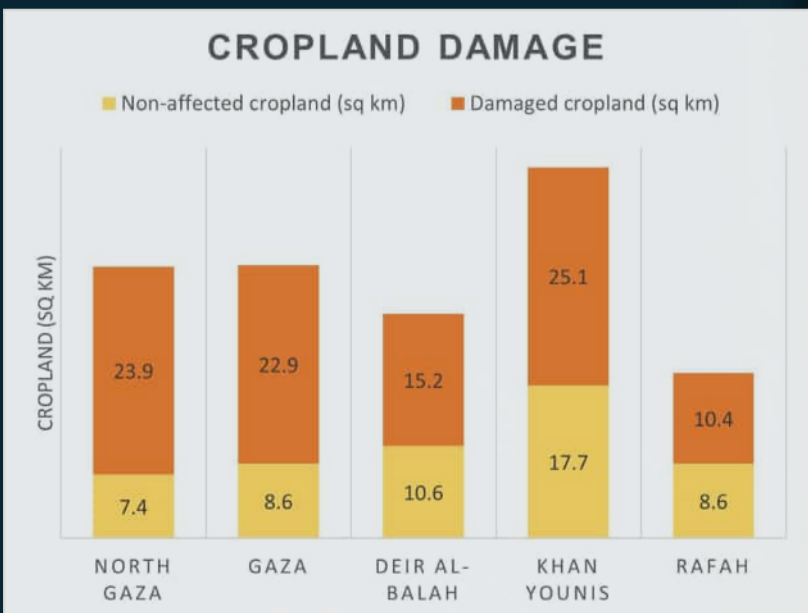
**COMPLEX EMERGENCY**  
CE20231007PSE

AREA OF INTEREST  
365km<sup>2</sup>

DAMAGED CROPLAND  
98km<sup>2</sup>



Governorate	Non-affected cropland (sq km)		Damaged cropland (sq km)		Total area of cropland (sq km)
	Area	Percentage	Area	Percentage	
North Gaza	7.4	24%	23.9	76%	31.3
Gaza	8.6	27%	22.9	73%	31.5
Deir Al-Balah	10.6	41%	15.2	59%	25.9
Khan Younis	17.7	41%	25.1	59%	42.8
Rafah	8.6	45%	10.4	55%	19.0
<b>Total</b>	<b>52.9</b>		<b>97.6</b>		<b>150.5</b>



### UNOSAT Damage to Cropland Overview Map

This map illustrates satellite-detected changes in cropland areas of the Gaza Strip resulting from the decline in the health and density of crops due to the ongoing conflict. UNOSAT conducted an analysis utilising satellite imagery collected by the Sentinel-2 satellite between July 2017 and 2024, performing a Normalized Difference Vegetation Index (NDVI) analysis as well as a multitemporal classification to identify notable changes taking place in agricultural areas during that timeframe. The methodology evaluated the damage as a decline in the health and density of crops in July 2024, in comparison to the preceding seven seasons spanning from 2017 to 2024. The decline in the health and density of the crops can be observed due to the impact of activities such as razing, heavy vehicle activity, bombing, shelling, and other conflict-related dynamics. The analysis includes damage assessment for orchards and other trees, field crops and vegetables. UNOSAT analysis shows that the agricultural extent in the Gaza Strip is estimated to be 150 sq. km, accounting for approximately 41% of the total area of the Gaza Strip, following an extensive land-cover analysis.

Compared to the average of the previous seven years, approximately 65% of the permanent crop fields in the Gaza Strip exhibited a significant decline in health and density in July 2024. In a comprehensive evaluation, it was found that there has been a 4% increase in the proportion of cropland that has been damaged since the previous analysis conducted in June 2024. Additionally, the analysis indicates a notable rise in the destruction of the orchards and other trees, field crops and vegetables in the Gaza Governorate, with a 4-percentage point increase compared to the previous June 2024 analysis. Moreover, there has been a notable escalation in the destruction of cropland within the Rafah Governorate, with the percentage rising from 52% in June 2024 to 55% in July 2024. This is a preliminary analysis and has not yet been validated in the field.

**Legend**

- Damaged cropland
- Non-affected cropland
- Populated place
- Primary road
- Secondary road
- Armistice Demarcation Line
- Governorate boundary
- International boundary

The boundaries and names shown and the designations used on this map do not imply official endorsement or acceptance by the United Nations.