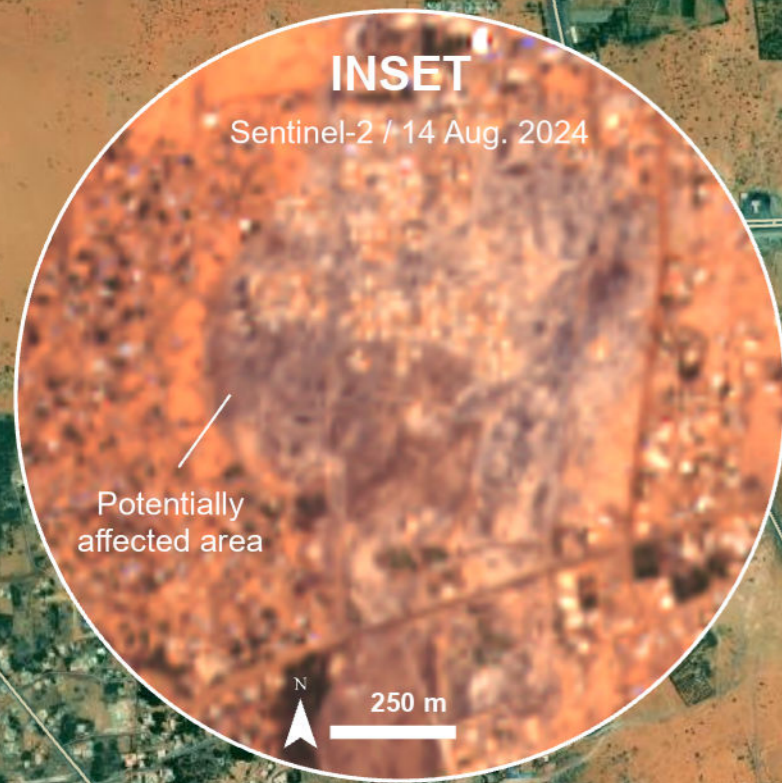


# LIBYA

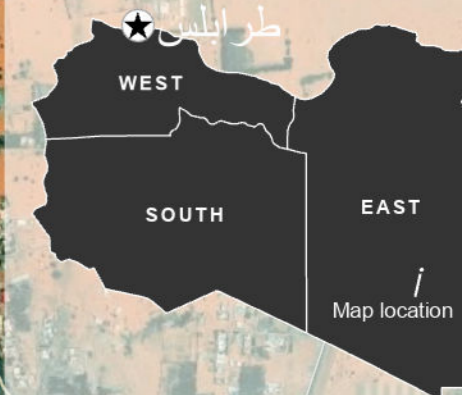
## AL-JAWF TOWN, ALKUFRA GOVERNORATE, EAST PROVINCE

IMAGERY ANALYSIS: 14/08/2024 PUBLISHED 16/08/2024 V1.

ANALYSED AREA ~120 km <sup>2</sup>	POPULATION IN ANALYSED AREA 32,000	POTENTIALLY AFFECTED AREA ~2 km <sup>2</sup>
---------------------------------------	---------------------------------------	---



**FLOOD**  
FL20240812LBY



**Satellite detected water extent in Al-jawf Town, Alkufra Governorate, East Province, Libya as of 14 August 2024**

This map illustrates satellite-detected water extent in Al-jawf Town, Alkufra Governorate, East Province, Libya as observed from a Sentinel-2 satellite image acquired on 14 August 2024 at 11:13 UTC. Within the analysed area of about 120km<sup>2</sup>, a total of about 2 km<sup>2</sup> of lands appear to be affected by flood water.

This is a preliminary analysis and has not yet been validated in the field. Please send ground feedback to the United Nations Satellite Centre (UNOSAT).

**Legend**

- Primary road
- Secondary road
- Road
- Hospital
- School
- City/Town
- Potentially affected area [14 Aug. 2024]