

LIBYA

GHAT CITY, GHAT GOVERNORATE, SOUTH PROVINCE

IMAGERY ANALYSIS: 18/08/2024 PUBLISHED 21/08/2024 V1.

ANALYSED AREA ~65 km ²	GHAT CITY AREA ~15 km ²	FLOOD EXTENT [18 AUG. 2024] ~13 km ²	CITY AREA AFFECTED [18 AUG. 2024] ~5 km ² (30%)
BUILT-UP AREA IN GHAT CITY ~2 km ²	FLOODED BUILT-UP AREA EXTENT [18 AUG. 2024] ~0.5 km ² (25%)	POTENTIALLY AFFECTED ROADS [18 AUG. 2024] ~13 km	



FLOOD
FL20240812LBY



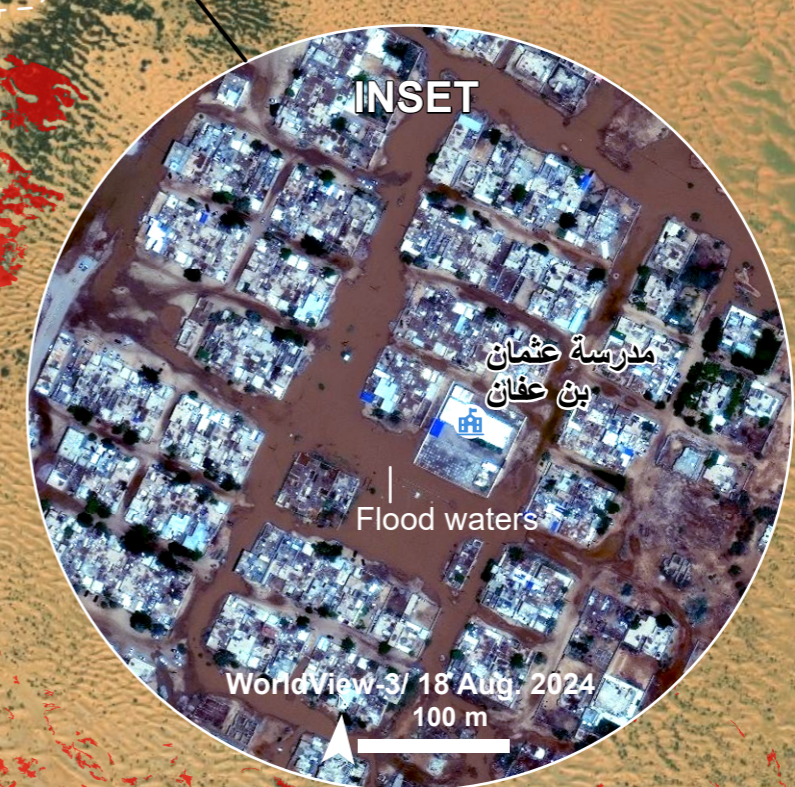
Satellite detected water extent in Ghat City, Ghat Governorate, South Province, Libya as of 18 August 2024

This map illustrates satellite-detected water extent in Ghat City, Ghat Governorate, South Province, Libya as observed from a WorldView-3 satellite image acquired on 18 August 2024 at 11:53 local time (09:53 UTC). Within analysed area of about 65km², a total of about 13 km² of land appears to be affected by floodwaters. In Ghat City, approximately 5 km² (30%) of the city is flooded, which includes around 0.5 km² of built-up area. Additionally, about 13km of road is affected by the flooding

This is a preliminary analysis and has not yet been validated in the field. Please send ground feedback to the United Nations Satellite Centre (UNOSAT)

Legend

- City/Town
- Hospital
- School
- River
- Affected road
- Primary road
- Secondary road
- Road
- Analysis extent
- Ghat city boundary
- Flooded built-up area extent
- Satellite detected water [18 Aug. 2024]



Spatial Reference: Name: WGS 1984 UTM Zone 34N, PCS: WGS 1984 UTM Zone 34N, GCS: GCS WGS 1984, Datum: WGS 1984
 Satellite Imagery: WorldView-3, Imagery Date: 18 August 2024, 09:53 UTC, Resolution: 30 cm, Copyright: © 2024 Maxar, Source: Department of State, HIU, USG Plus License
 Boundary data: UNITAR-UNOSAT, Libyan Bureau of Statistics, WFP, and Global Logistics Cluster, International Organisation for Migration (IOM)
 Waterways: OpenStreetMap, Road data: OpenStreetMap, Populated place: OpenStreetMap
 Built-up area: ESA WorldCover 2021 © ESA WorldCover project [2021] / Contains 10°11'E
 modified Copernicus Sentinel data (2021) processed by ESA WorldCover consortium
 Analysis: United Nations Satellite Centre (UNOSAT)
 Production: United Nations Satellite Centre (UNOSAT)
 The boundaries and names shown, and the designations used on this map do not imply official endorsement or acceptance by the United Nations. The United Nations Satellite Centre - UNOSAT is not responsible for the misuse or misrepresentation of the map.