

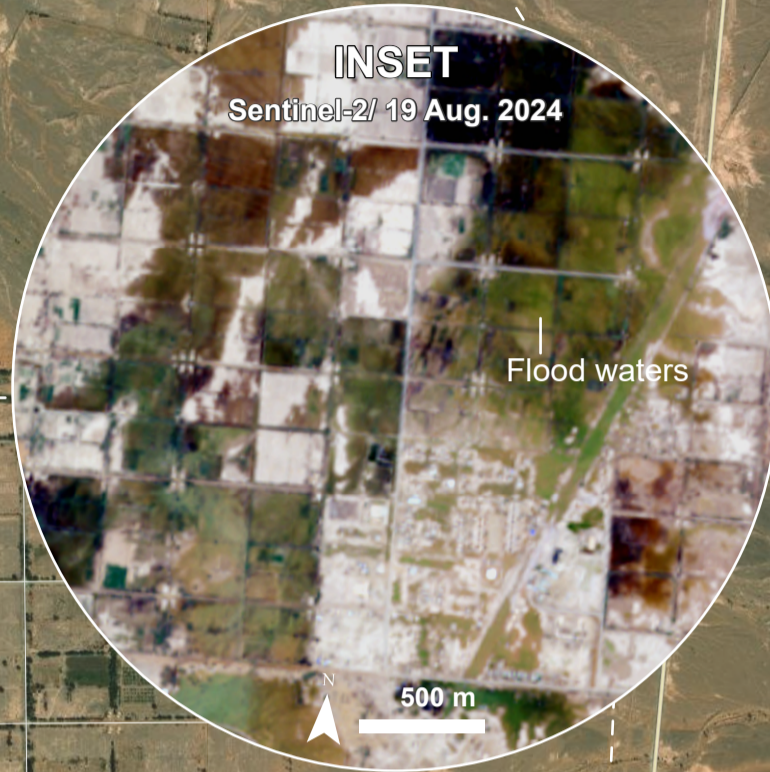
LIBYA

TAHALA VILLAGE, GHAT GOVERNORATE, SOUTH PROVINCE

IMAGERY ANALYSIS: 19/08/2024 PUBLISHED 21/08/2024 V1.

ANALYSED AREA ~100 km ²	TAHALA VILLAGE AREA ~36 km ²	FLOOD EXTENT [19 AUG. 2024] ~5 km ²	CITY AREA AFFECTED [19 AUG. 2024] ~4 km ² (11%)
---------------------------------------	--	---	---

POTENTIALLY AFFECTED ROADS [19 AUG. 2024]
~3 km



FLOOD
FL20240812LBY



Satellite detected water extent in Tahala Village, Ghat Governorate, South Province, Libya as of 19 August 2024

This map illustrates satellite-detected water extent in Tahala Village, Ghat Governorate, South Province, Libya as observed from a Sentinel-2 satellite image acquired on 19 August 2024 at 11:50 local time (09:50 UTC). Within analysed area of about 100 km², a total of about 5 km² of land appears to be affected by floodwaters. In Tahala Village, approximately 4 km² (11%) of the village is flooded. Additionally, about 3 km of road is affected by the flooding.

This is a preliminary analysis and has not yet been validated in the field. Please send ground feedback to the United Nations Satellite Centre (UNOSAT).

Legend

- Village
- Potentially affected road
- Primary road
- Secondary road
- Road
- Analysis extent
- Tahala village boundary
- Satellite detected water [19 Aug. 2024]

Map scale for A3: 1:25,000

