

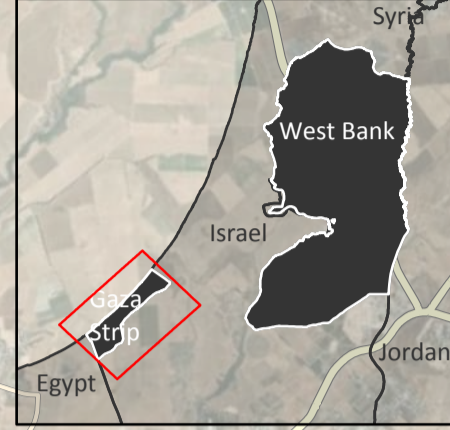
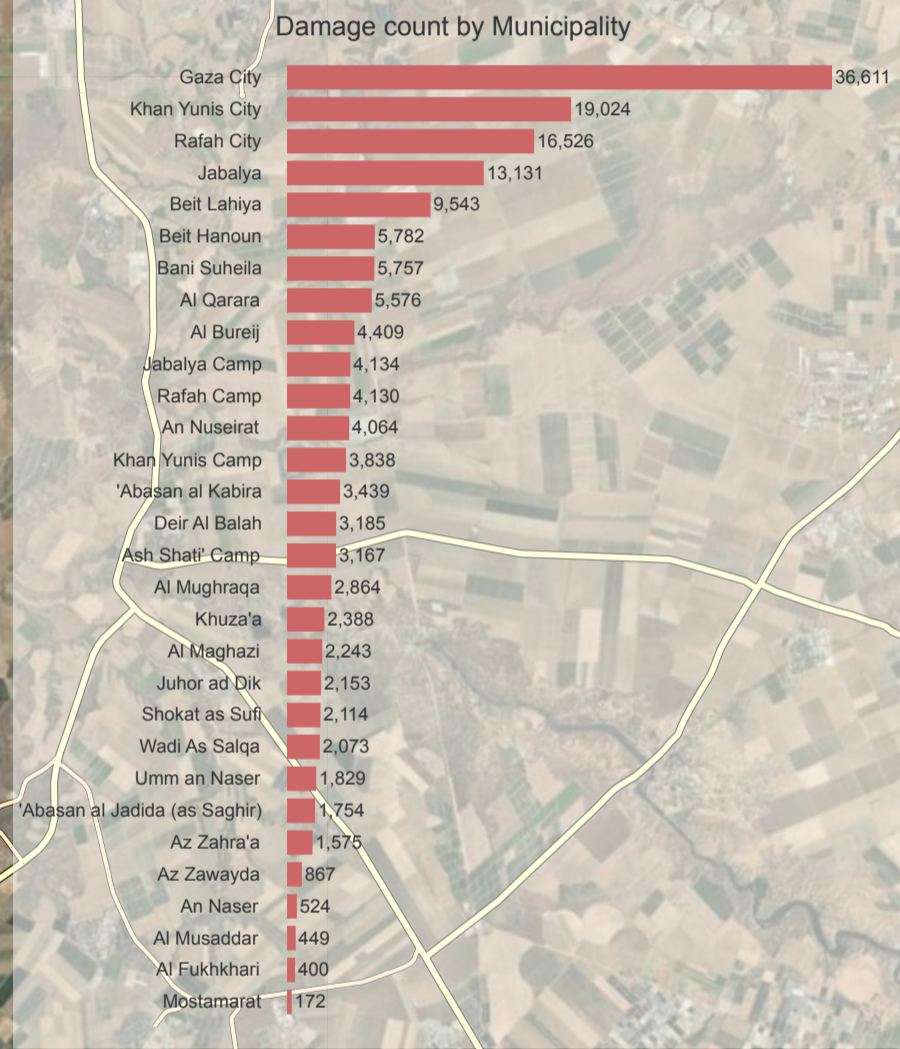
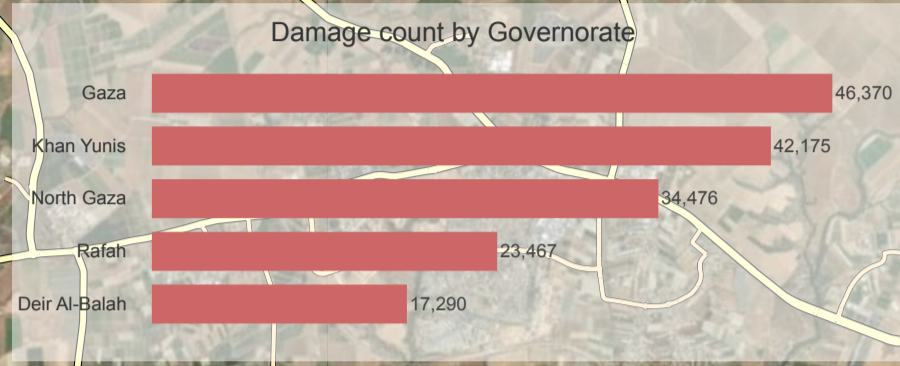
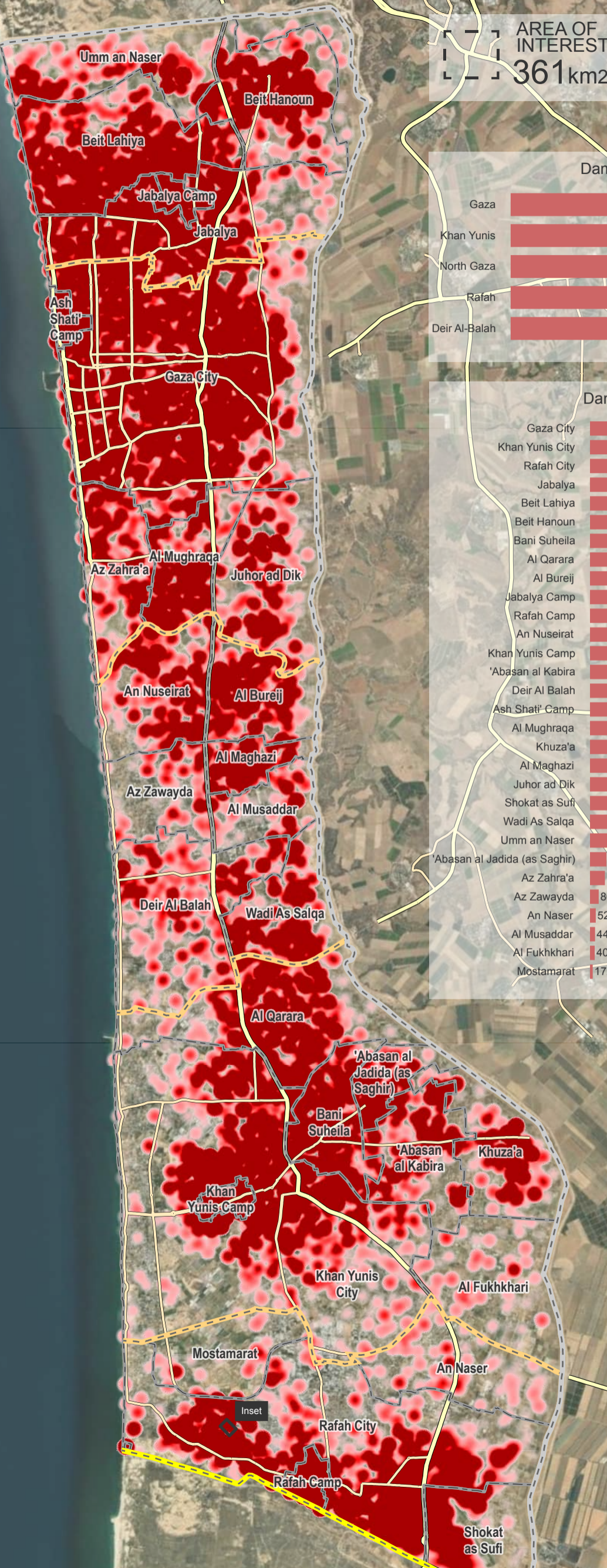
OCCUPIED PALESTINIAN TERRITORY

GAZA STRIP

IMAGERY ANALYSIS: 06 September 2024 / PUBLISHED: 27 September 2024 / V1

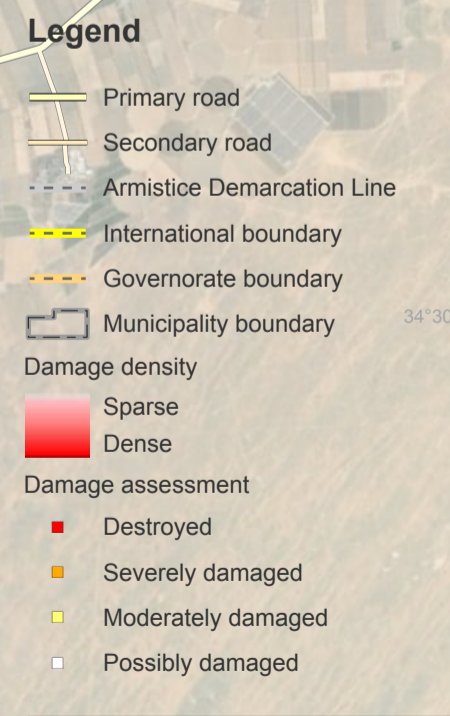


COMPLEX EMERGENCY
CE20231007PSE



UNOSAT Damage Assessment Overview Map

This map illustrates a satellite imagery-based comprehensive assessment of damage and destruction to structures within the area of interest in the Gaza Strip, Occupied Palestinian Territory, based on images collected on 3 and 6 September 2024 when compared to images collected on 1 May 2023, 10 May 2023, 18 September 2023, 15 October 2023, 7 November 2023, 26 November 2023, 6-7 January 2024, 29 February 2024, 31 March - 1 April 2024, 3 May 2024, and 6 July 2024. According to satellite imagery analysis, UNOSAT identified 52,564 destroyed structures, 18,913 severely damaged structures, 56,710 moderately damaged structures, and 35,591 possibly damaged structures for a total of 163,778 structures. These correspond to around 66% of the total structures in the Gaza Strip and a total of 227,591 estimated damaged housing units. The governorates of Khan Yunis and Rafah have experienced the highest rise in damage compared to the 6 July 2024 analysis, with around 1,470 new structures damaged in Khan Yunis and around 3,770 in Rafah. Within Rafah, Rafah City municipality had the highest number of newly damaged structures, totalling 3,289. This is a preliminary analysis and has not yet been validated in the field.



The boundaries and names shown and the designations used on this map do not imply official endorsement or acceptance by the United Nations.