

# OCCUPIED PALESTINIAN TERRITORY

## GAZA STRIP

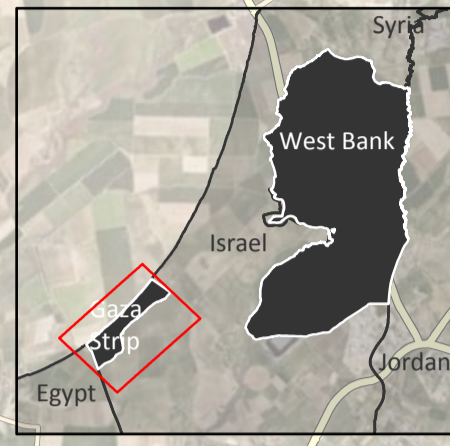
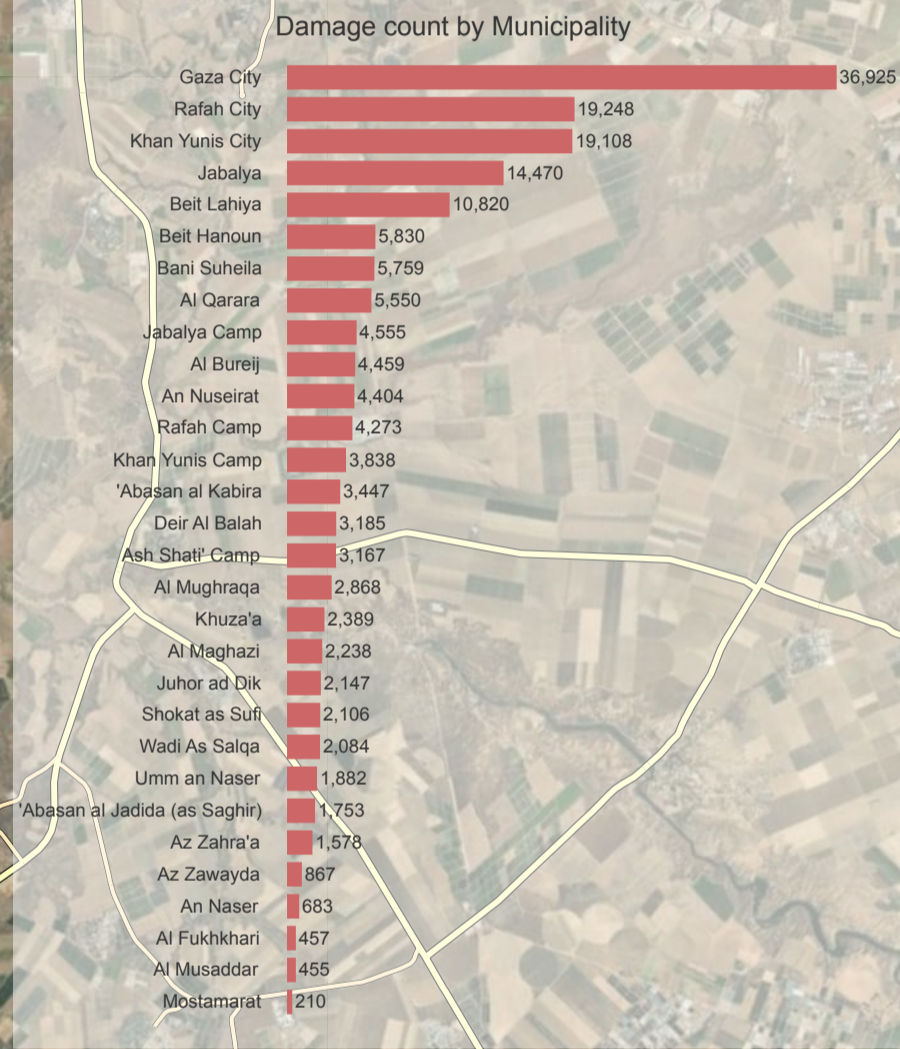
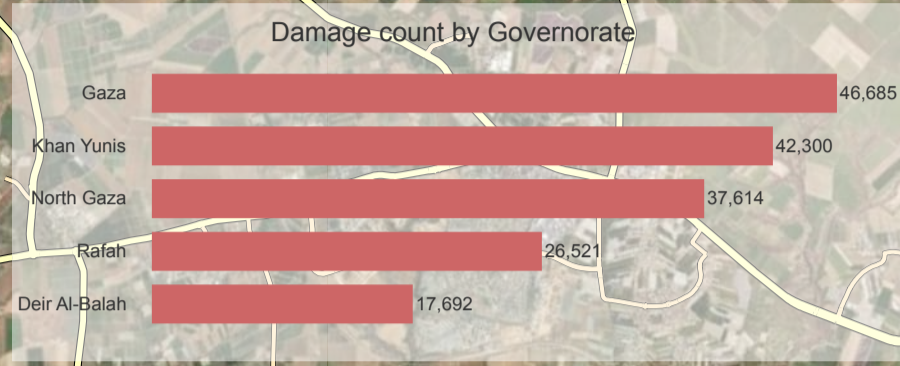
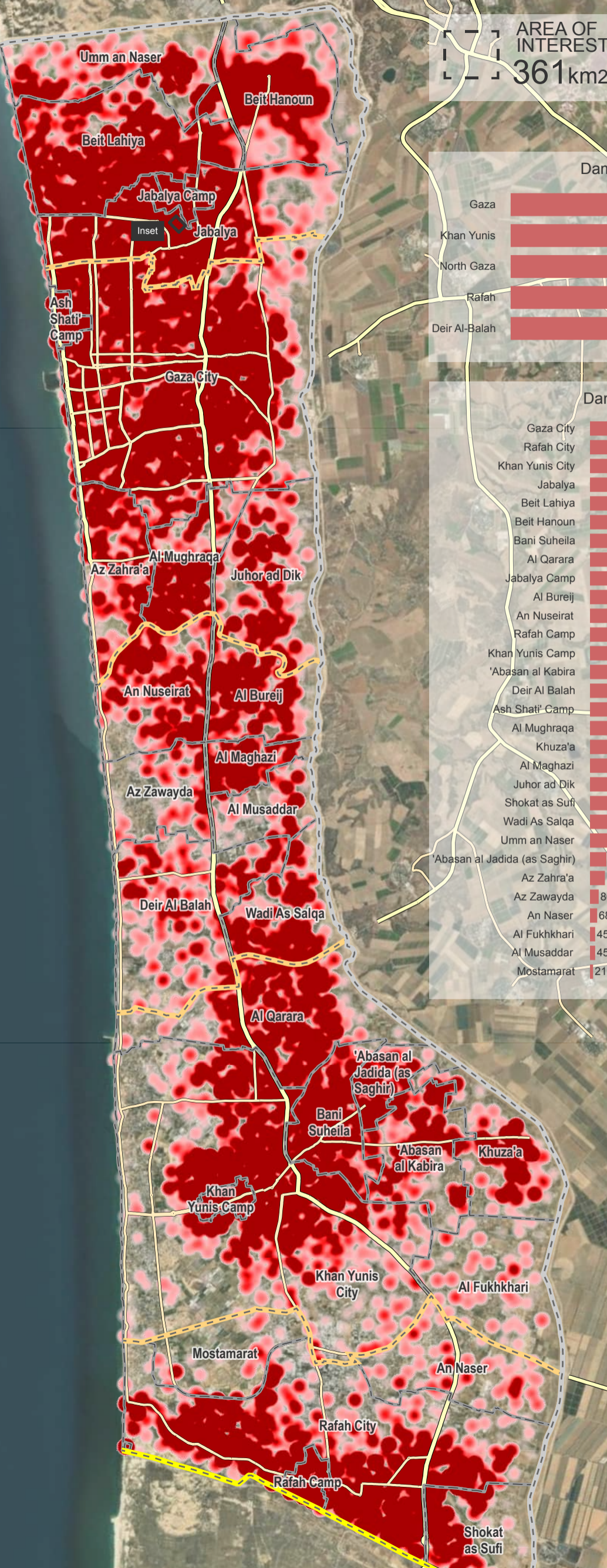
IMAGERY ANALYSIS: 01 December 2024 / PUBLISHED: 13 December 2024 / V1



**COMPLEX EMERGENCY**  
CE20231007PSE

AREA OF INTEREST  
**361km<sup>2</sup>**

DAMAGED BUILDINGS  
**170,812**



### UNOSAT Damage Assessment Overview Map

This map illustrates a satellite imagery-based comprehensive assessment of damage and destruction to structures within the area of interest in the Gaza Strip, Occupied Palestinian Territory, based on images collected on 1 December 2024 when compared to images collected on 1 May 2023, 10 May 2023, 18 September 2023, 15 October 2023, 7 November 2023, 26 November 2023, 6-7 January 2024, 29 February 2024, 31 March - 1 April 2024, 3 May 2024, 6 July 2024, and 3-6 September 2024. According to satellite imagery analysis, UNOSAT identified 60,368 destroyed structures, 20,050 severely damaged structures, 56,292 moderately damaged structures, and 34,102 possibly damaged structures for a total of 170,812 structures. These correspond to around 69% of the total structures in the Gaza Strip and a total of 245,123 estimated damaged housing units. The governorates of North Gaza and Rafah have experienced the highest rise in damage compared to the 6 September 2024 analysis, with around 3,138 new structures damaged in North Gaza and around 3,054 in Rafah. Within North Gaza, Jabalya municipality had the highest number of newly damaged structures, totalling 1,339. This is a preliminary analysis and has not yet been validated in the field.



### Legend

- Primary road
- Secondary road
- Armistice Demarcation Line
- International boundary
- Governorate boundary
- Municipality boundary

### Damage density

- Sparse
- Dense

### Damage assessment

- Destroyed
- Severely damaged
- Moderately damaged
- Possibly damaged

The boundaries and names shown and the designations used on this map do not imply official endorsement or acceptance by the United Nations.