

17 July 2025

United Nations Office for the Coordination of Humanitarian Affairs - UNOCHA

UNOSAT Comprehensive Damage Assessment and Security Analysis
of Tulkarm, Nur Shams and Jenin Refugee Camps in Tulkarm and
Jenin Governorates, West Bank, Occupied Palestinian Territory

WEST BANK



The designations employed and the presentation of material on this map do not imply the expression of any opinion whatsoever on the part of the Secretariat of the United Nations concerning the legal status of any country, territory, city or area or its authorities, or concerning the delimitation of its frontiers or boundaries. The United Nations Satellite Centre - UNOSAT is not responsible for the misuse or misrepresentation of the map.

West Bank - Overview

Image center:
31°52'10.4"N
35°13'14.6"E



UNOSAT conducted a satellite imagery-based comprehensive damage assessment, a road damage assessment and a security assessment within the perimeter of the following refugee camps, in the West Bank, Occupied Palestinian Territory:

- Tulkarem Camp, Tulkarem Governorate.
- Nur Shams Camp, Tulkarem Governorate.
- Jenin Camp, Jenin Governorate.

This report highlights a comprehensive building and infrastructure damage assessment (CDA), a road damage assessment and a security analysis. Based on the severity scale, the CDA has been categorised into three levels: destroyed, severely damaged, and moderately damaged. The confidence level of the analysis was determined by evaluating the extent of visible damage observed on imagery, along with other indicators such as debris. The road damage assessment has been categorised into three levels as well: widened road, damaged road and new road. The Security analysis shows visible military activities on imagery, such as the presence of military vehicles, roadblocks and berms blocking road access.

UNOSAT acquired satellite images collected on 21 May 2025, on 12 March 2025, on 21 October 2023, and on 17 June 2023. These images were then used for comparison and to detect changes within the areas of interest.

The designations employed and the presentation of material on this map do not imply the expression of any opinion whatsoever on the part of the Secretariat of the United Nations concerning the legal status of any country, territory, city or area or its authorities, or concerning the delimitation of its frontiers or boundaries. The United Nations Satellite Centre (UNOSAT) is not responsible for the misuse or misrepresentation of the maps.



COMPREHENSIVE DAMAGE ASSESSEMENT



UNOSAT conducted a satellite imagery-based comprehensive damage assessment within the perimeter of the following refugee camps, in the West Bank, Occupied Palestinian Territory:

- Tulkarem Camp, Tulkarem Governorate.
- Nur Shams Camp, Tulkarem Governorate.
- Jenin Camp, Jenin Governorate.

This report highlights a comprehensive building and infrastructure damage assessment (CDA). Based on the severity scale, the CDA has been categorized into three levels:

- Destroyed
- Severely damaged
- Moderately damaged

The confidence level of the analysis was determined by evaluating the extent of visible damage observed on imagery, along with other indicators such as debris.

UNOSAT acquired satellite images collected on 21 May 2025, on 12 March 2025, on 21 October 2023, and 17 June 2023. These images were then used for comparison and to detect changes within the areas of interest.



[Issam Rimawi – Anadolu Agency, 06 March 2025]



AP, April 2024

Comprehensive damage assessment Jenin Camp



This map illustrates a UNOSAT satellite imagery-based comprehensive assessment of damage and destruction to structures within Jenin Camp, Jenin Governorate, West Bank, Occupied Palestinian Territory, based on images collected on 21 May 2025 when compared to an image collected on 12 March 2025.

The Jenin Camp is located 78 km north of East Jerusalem and covers an area of approximately 0.42 km².

According to the satellite imagery analysis, UNOSAT identified 125 destroyed structures, 101 severely damaged structures, and 322 moderately damaged structures for a total of 548 structures. These correspond to around 43% of the total structures that have been damaged in Jenin Camp. This is a preliminary analysis and has not yet been validated in the field.

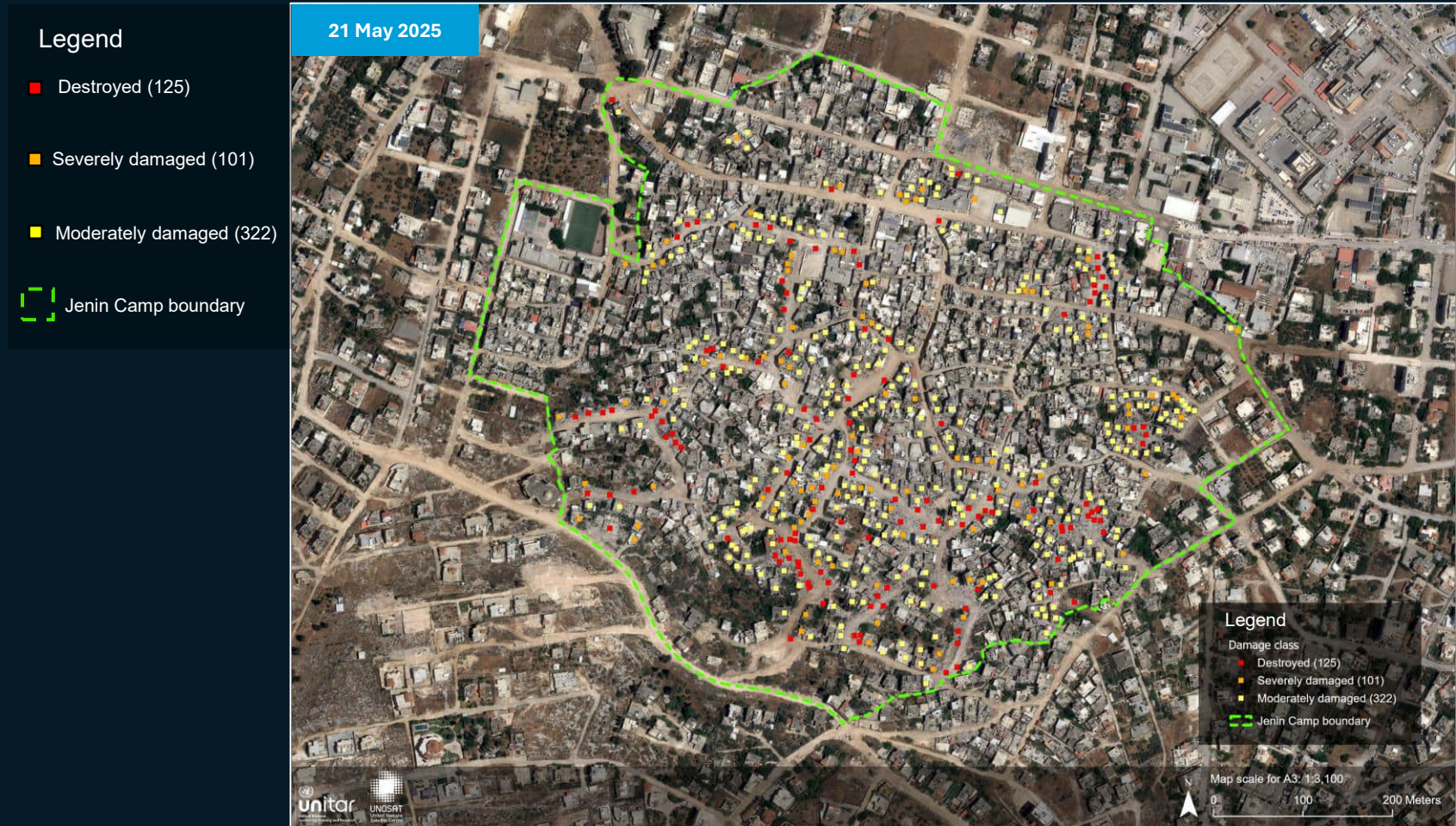


Image center: 32°27'37.2"N 35°17'16.0"E

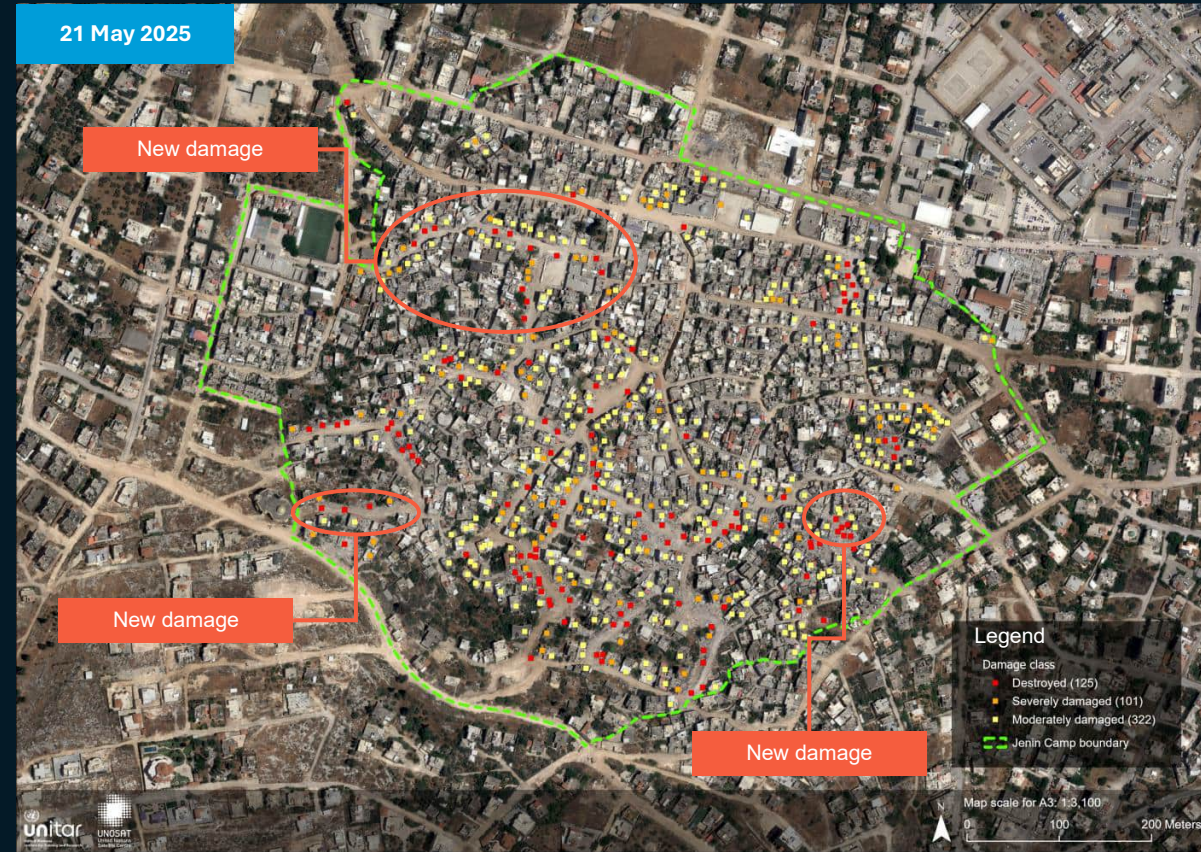
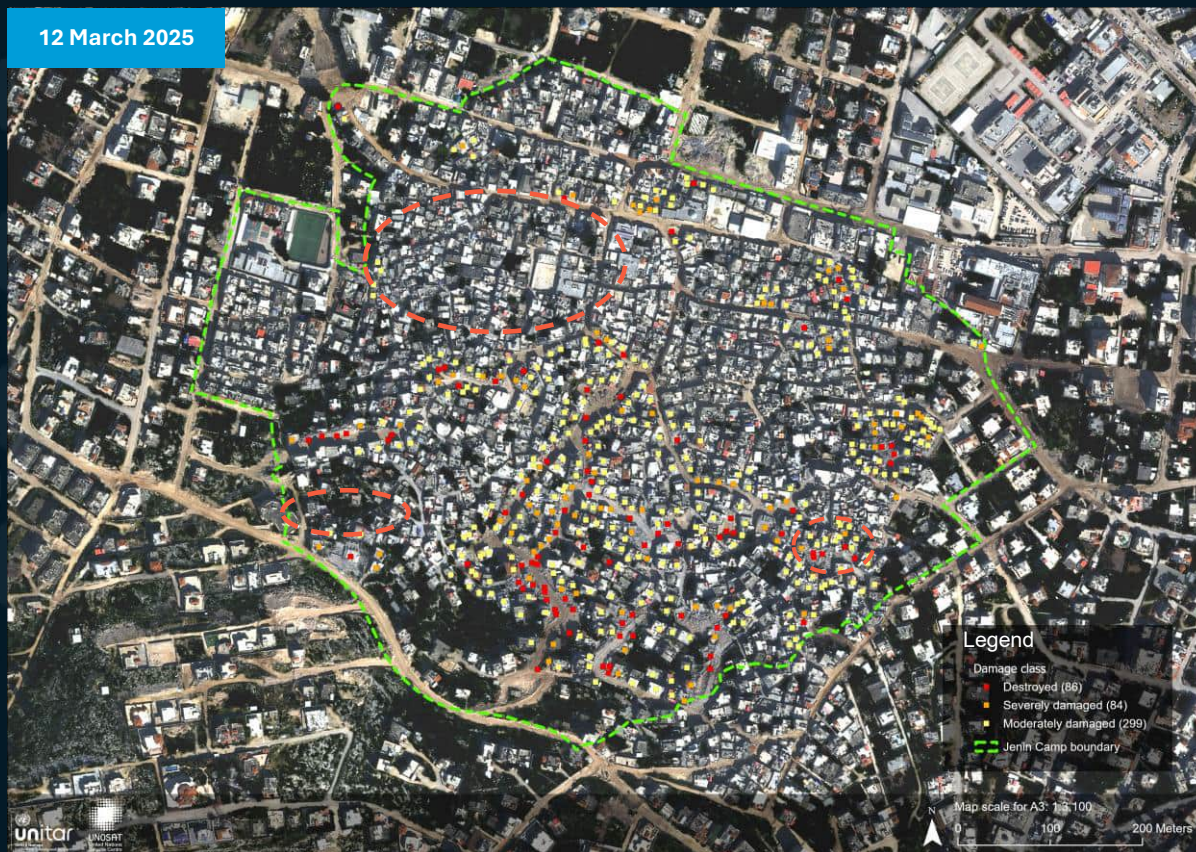
Pleiades NEO image collected on 21 May 2025

Comprehensive damage assessment Jenin Camp

Image center:
32°27'37.2"N
35°17'16.0"E



Changes observed



UNOSAT acquired two Pleiades NEO satellite images of Jenin Camp, Jenin Governorate, West Bank, Occupied Palestinian Territory, collected on 21 May 2025 and 12 March 2025. As of 21 May 2025, when compared to 12 March 2025, new damaged and destroyed buildings were visible, and the total count of damaged and destroyed structures identified in Jenin Camp increased from 469 to 548.

Comprehensive damage assessment Jenin Camp – AOI 1, 2 and 3

Changes observed



AOI 1



AOI 2



AOI 3

Comprehensive damage assessment Nur Shams Camp

This map illustrates a UNOSAT satellite imagery-based comprehensive assessment of damage and destruction to structures within Nur Shams Camp, Tulkarem Governorate, West Bank, Occupied Palestinian Territory, based on images collected on 21 May 2025 when compared to an image collected on 12 March 2025.

The Nur Shams Camp is located 63.5 km northwest of East Jerusalem and covers an area of approximately 0.32 km².

According to the satellite imagery analysis, UNOSAT identified 89 destroyed structures, 35 severely damaged structures, and 156 moderately damaged structures for a total of 280 structures. These correspond to around 35% of the total structures that have been damaged in Nur Shams Camp. This is a preliminary analysis and has not yet been validated in the field.

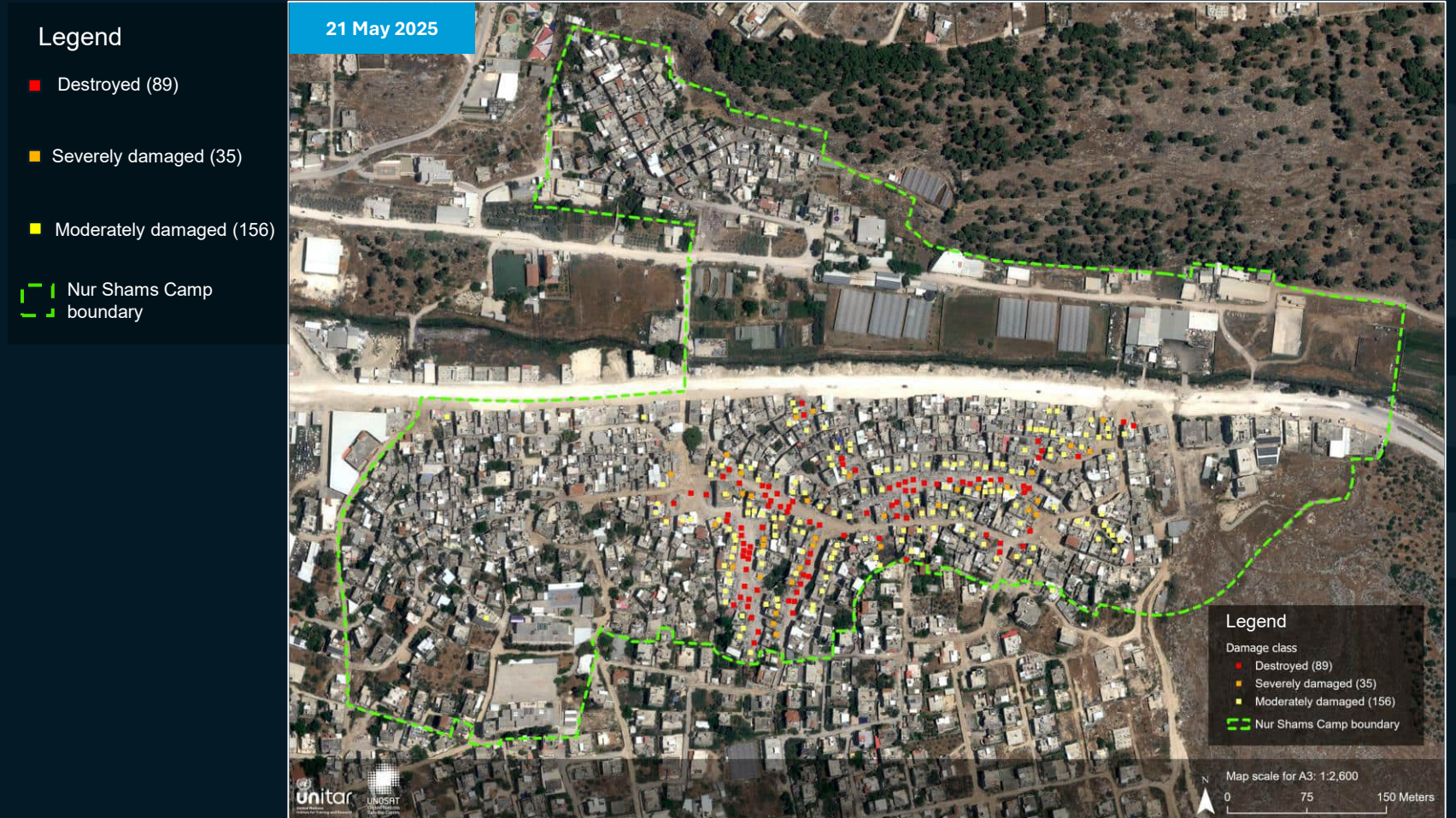


Image center: 32°19'08.7"N 35°03'39.0"E

Pleiades NEO image collected on 21 May 2025

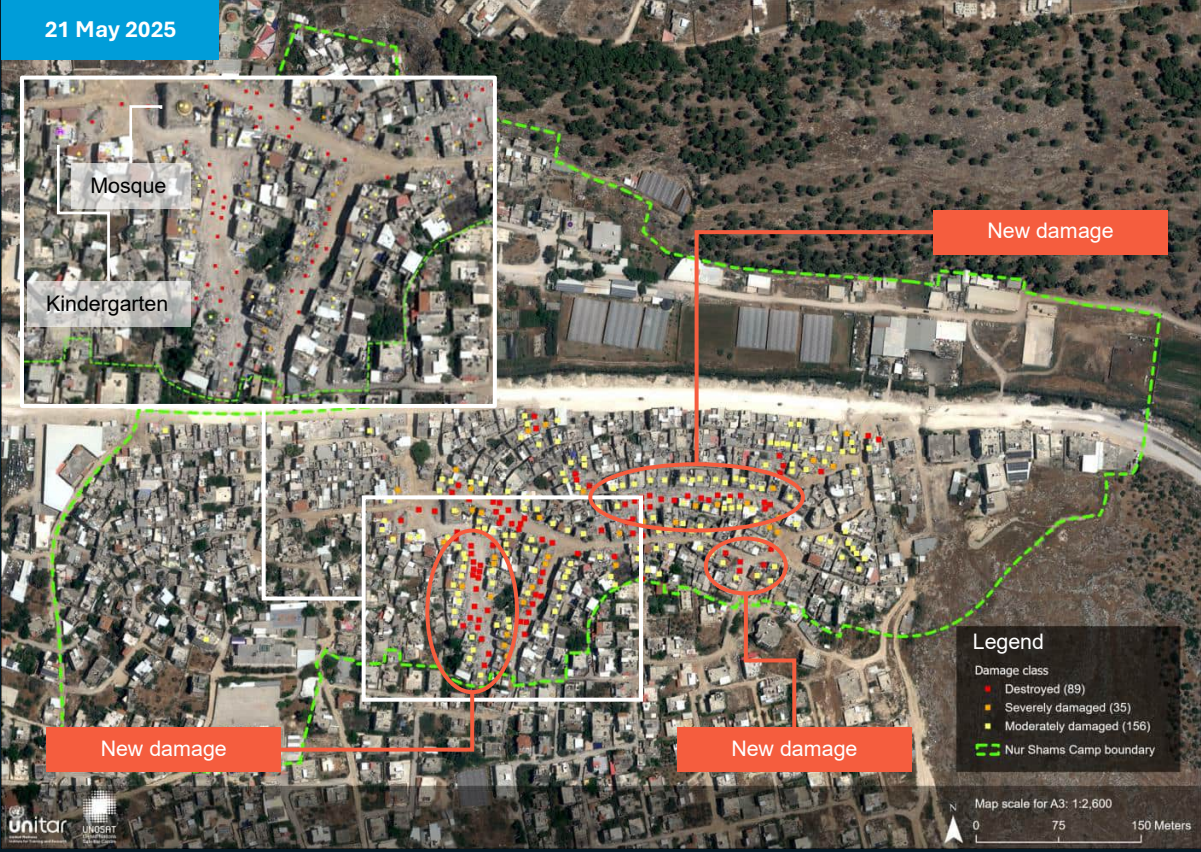
Comprehensive damage assessment

Nur Shams Camp

Image center:
32°19'08.7"N
35°03'39.0"E



Changes observed



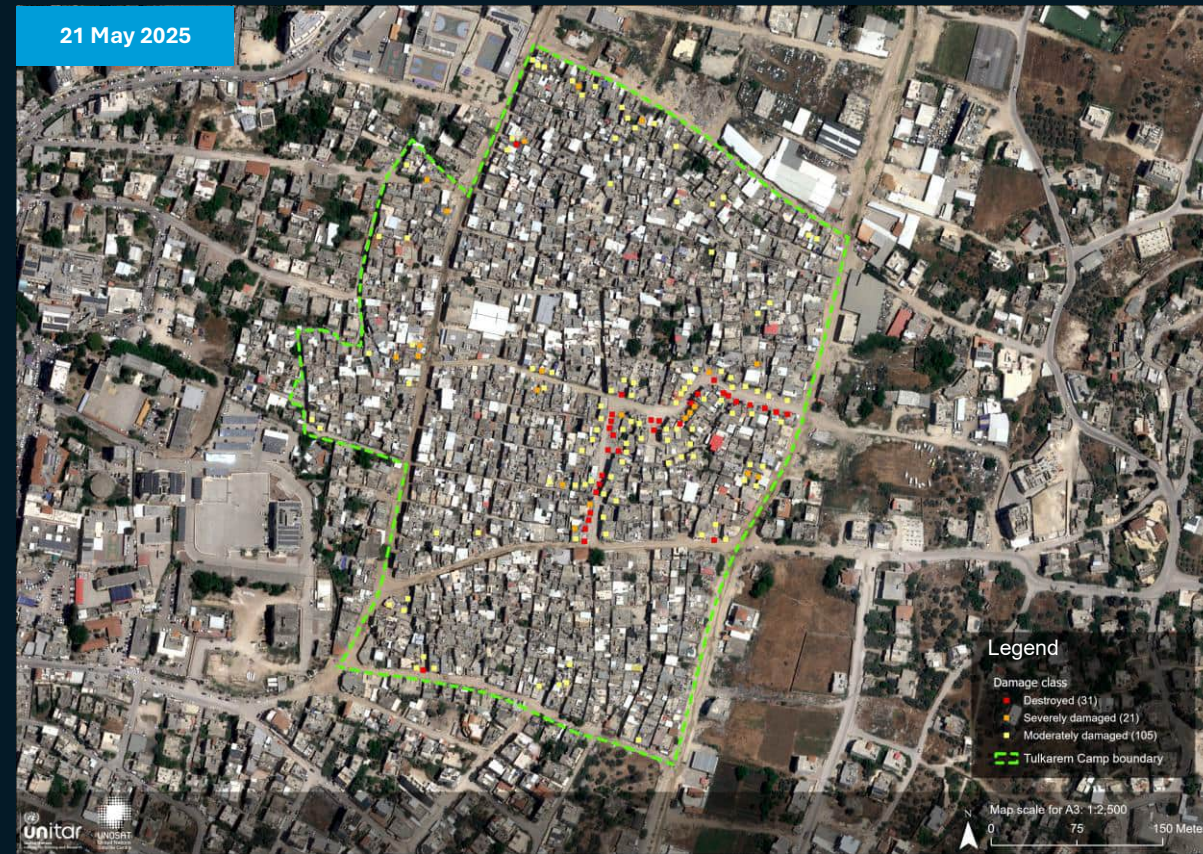
UNOSAT acquired two Pleiades NEO satellite images of Nur Shams Camp, Tulkarem Governorate, West Bank, Occupied Palestinian Territory, collected on 21 May 2025 and 12 March 2025. As of 21 May 2025, when compared to 12 March 2025, new damaged and destroyed buildings were visible, and the total count of damaged and destroyed structures identified in Nur Shams Camp increased from 164 to 280.

Comprehensive damage assessment Tulkarem Camp

Image center:
32°18'48.6"N
35°02'07.8"E



No changes were observed



UNOSAT acquired two Pleiades NEO satellite images of Tulkarem Camp, Tulkarem Governorate, West Bank, Occupied Palestinian Territory, collected on 21 May 2025 and 12 March 2025. As of 21 May 2025, when compared to 12 March 2025, no new damaged building was observed, and the total count of damaged and destroyed structures identified in Tulkarem Camp remains at 157.

ROAD DAMAGE ASSESSMENT



UNOSAT conducted a satellite imagery-based comprehensive damage assessment within the perimeter of the following refugee camps, in the West Bank, Occupied Palestinian Territory:

- Tulkarem Camp, Tulkarem Governorate.
- Nur Shams Camp, Tulkarem Governorate.
- Jenin Camp, Jenin Governorate.

This report highlights a road damage assessment. The road damage assessment three levels:

- **Widened road** (Damaged and widened roads, passing through damaged or destroyed buildings).
- **Damaged road** (Asphalt/concrete removed, or revealing dusty and muddy surfaces).
- **New road** (New road connection, without any visible damaged structures).

UNOSAT acquired satellite images collected on 21 May 2025, on 12 March 2025, on 21 October 2023, and 17 June 2023. These images were then used for comparison and to detect changes within the areas of interest.



The Palestinian Information Center, 3 September 2025

© UNRWA/Tareq Shalash

Road damage assessment Jenin Camp



This map illustrates a UNOSAT satellite imagery-based comprehensive assessment of damage to roads within Jenin Camp, Jenin Governorate, West Bank, Occupied Palestinian Territory, based on images collected on 21 May 2025 when compared to an image collected on 12 March 2025.

According to the satellite imagery analysis, UNOSAT identified several damaged roads and widened roads, in the vicinity of Jenin Camp, as of 21 May 2025.



Image center: 32°27'37.2"N 35°17'16.0"E

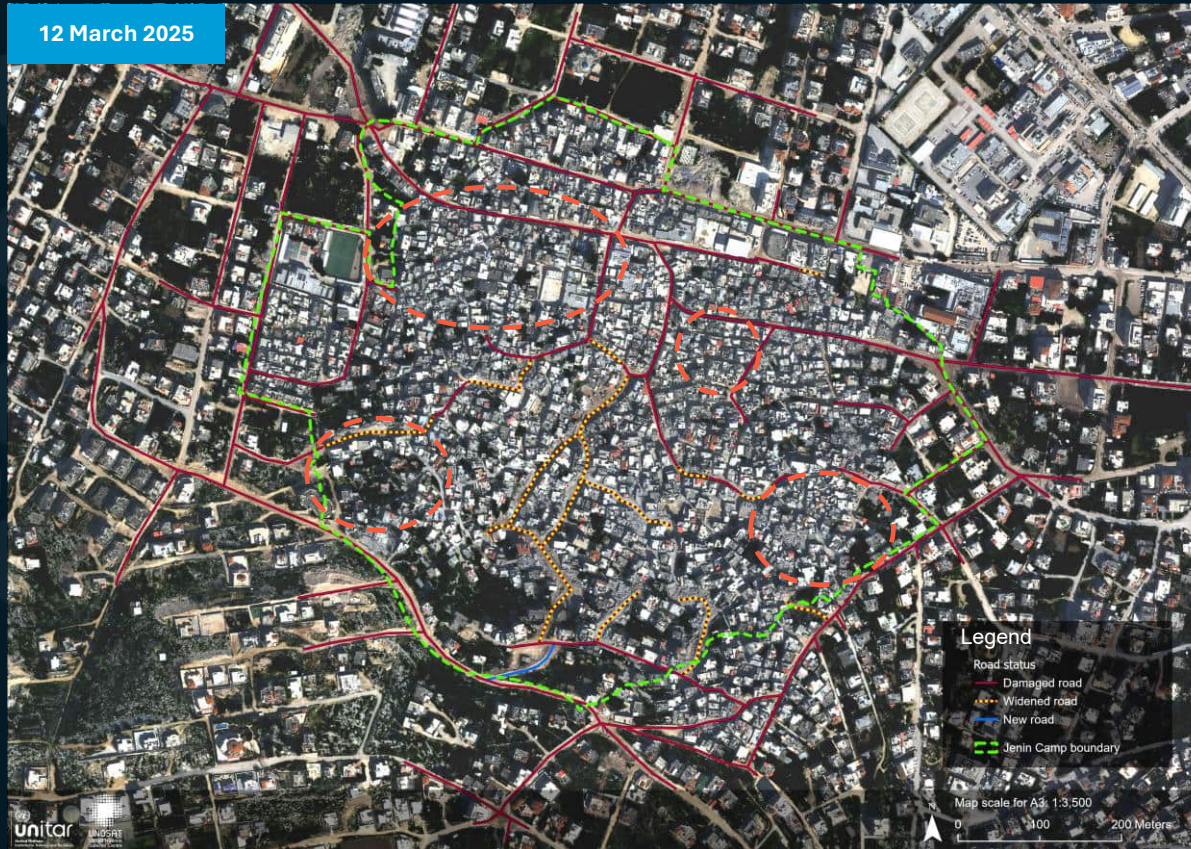
Pleiades NEO image captured on 21 May 2025

Road damage assessment Jenin Camp

Image center:
32°27'37.2"N
35°17'16.0"E



Changes observed



UNOSAT acquired two Pleiades NEO satellite images of Jenin Camp, Jenin Governorate, West Bank, Occupied Palestinian Territory, collected on 21 May 2025 and 12 March 2025. As of 12 March 2025, significant sections of roads in the vicinity of Jenin Camp appeared damaged or widened, making the vehicular access for civilian vehicles extremely difficult or even impossible. Along the widened roads, buildings appeared damaged or destroyed. As of 21 May 2025, when compared to 12 March 2025, new sections of roads appeared damaged or widened.

Road damage assessment Jenin Camp – AOI 1, 2 and 3

Changes observed



AOI 1



AOI 2



AOI 3

Legend

- Damaged road
- Widened road

Road damage assessment Nur Shams Camp



This map illustrates a UNOSAT satellite imagery-based comprehensive assessment of damage to roads within Nur Shams Camp, Tulkarem Governorate, West Bank, Occupied Palestinian Territory, based on images collected on 21 May 2025 when compared to an image collected on 12 March 2025.

According to the satellite imagery analysis, UNOSAT identified several damaged roads and widened roads, in the vicinity of Nur Shams Camp, as of 21 May 2025.

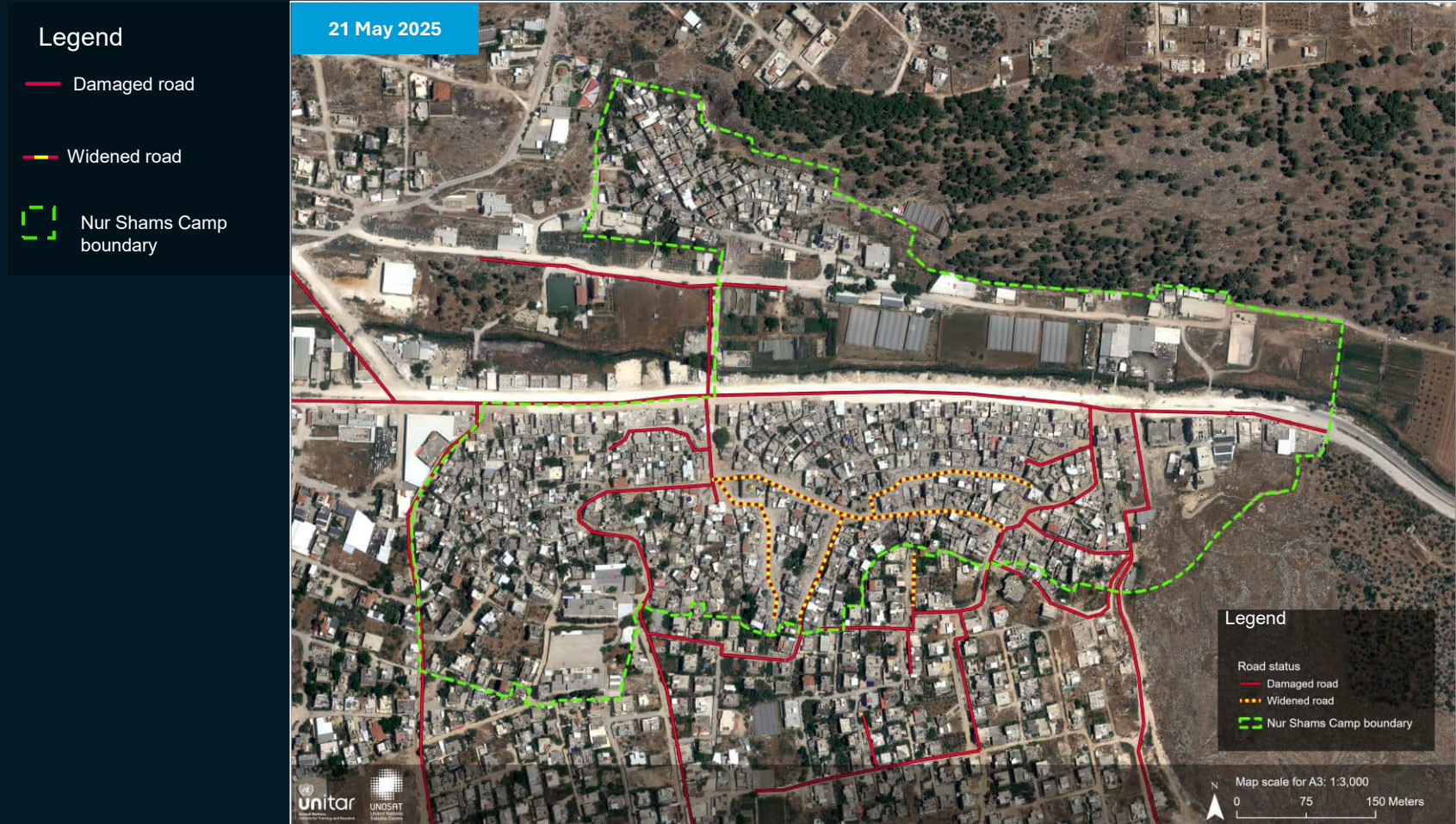


Image center: 32°19'08.7"N 35°03'39.0"E

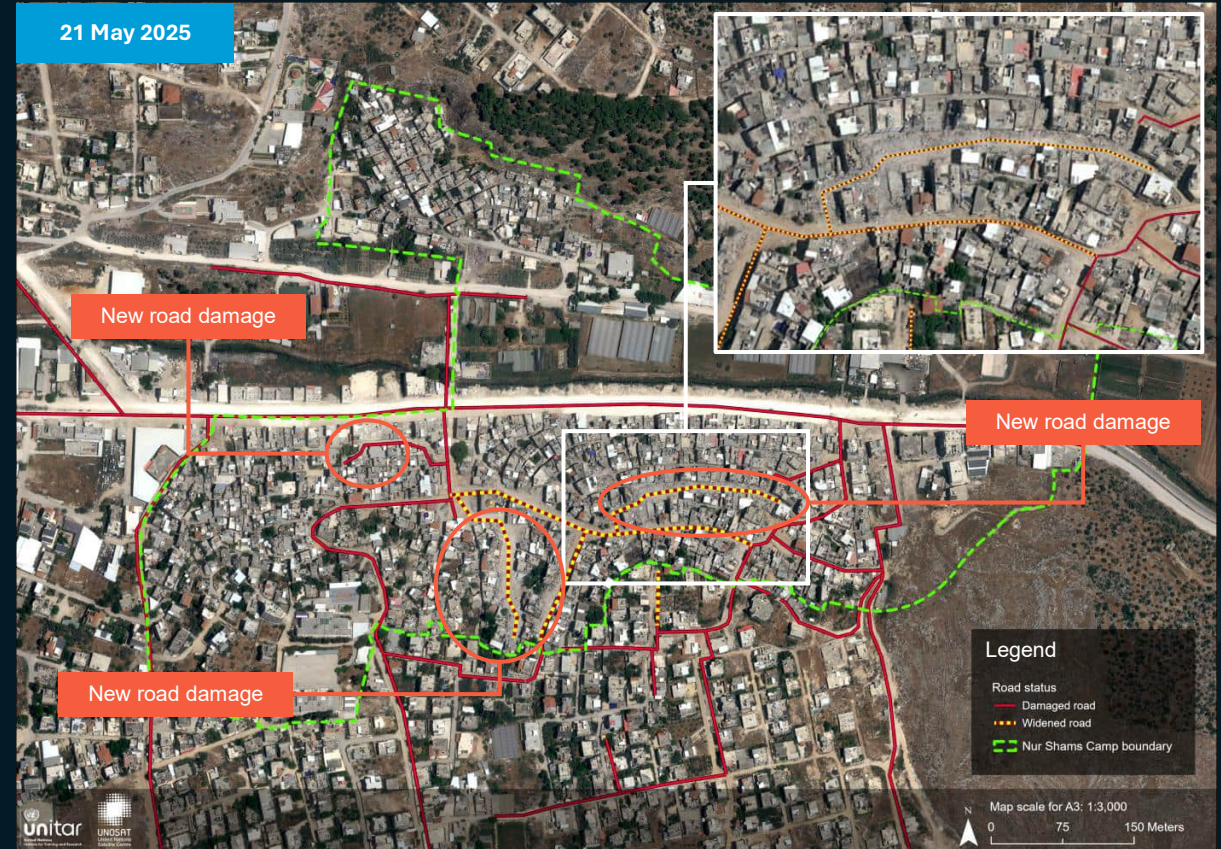
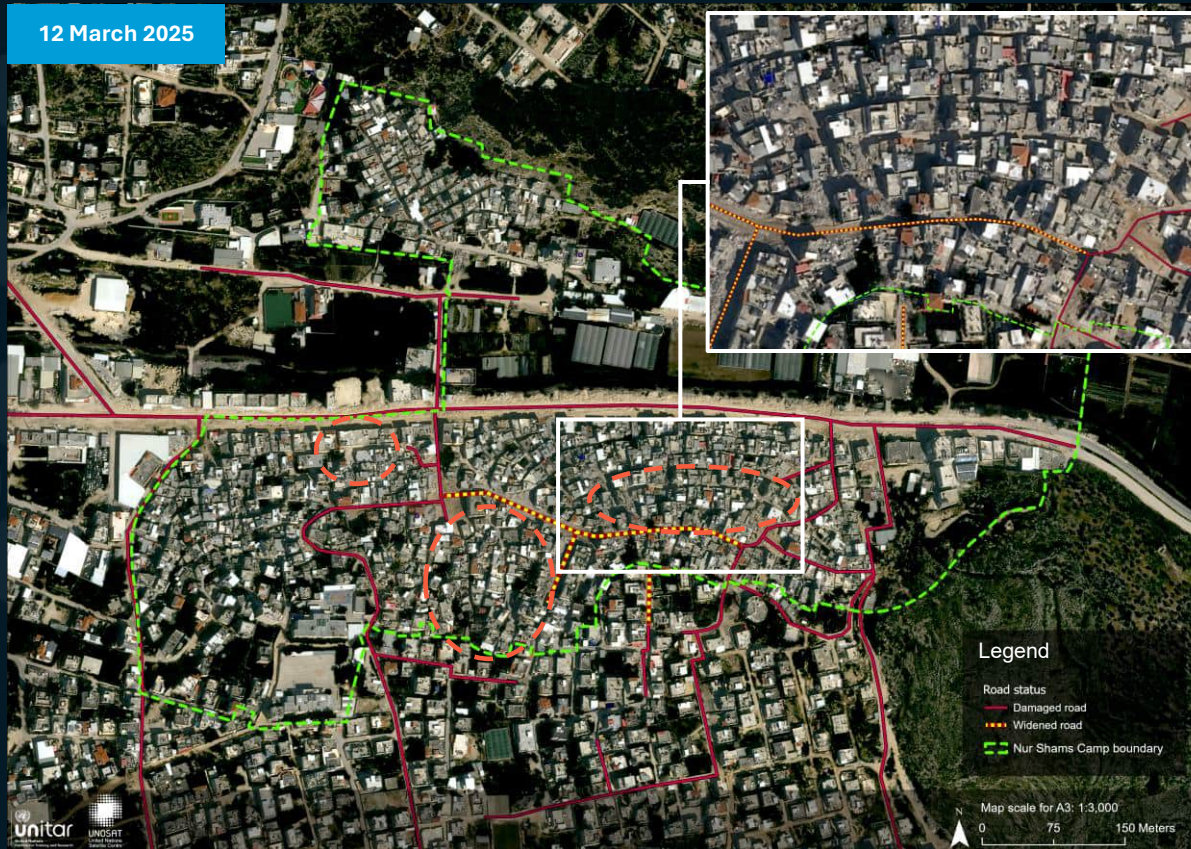
Pleiades NEO image captured on 21 May 2025

Road damage assessment Nur Shams Camp

Image center:
32°19'08.7"N
35°03'39.0"E



Changes observed



UNOSAT acquired two Pleiades NEO satellite images of Nur Shams Camp, Tulkarem Governorate, West Bank, Occupied Palestinian Territory, collected on 21 May 2025 and 12 March 2025. As of 12 March 2025, significant sections of roads in the vicinity of Nur Shams Camp appeared damaged or widened, making the vehicular access for civilian vehicles extremely difficult or even impossible. Along the widened roads, buildings appeared damaged or destroyed. As of 21 May 2025, when compared to 12 March 2025, new sections of roads appeared damaged or widened.

Road damage assessment Tulkarem Camp



This map illustrates a UNOSAT satellite imagery-based comprehensive assessment of damage to roads within Tulkarem Camp, Tulkarem Governorate, West Bank, Occupied Palestinian Territory, based on images collected on 21 May 2025 when compared to an image collected on 12 March 2025.

According to the satellite imagery analysis, UNOSAT has not observed any changes, compared to 12 March 2025, and identified several damaged roads and widened roads, in the vicinity of Tulkarem Camp, as of 21 May 2025.

Legend

— Damaged road

— Widened road

□ Tulkarem Camp boundary

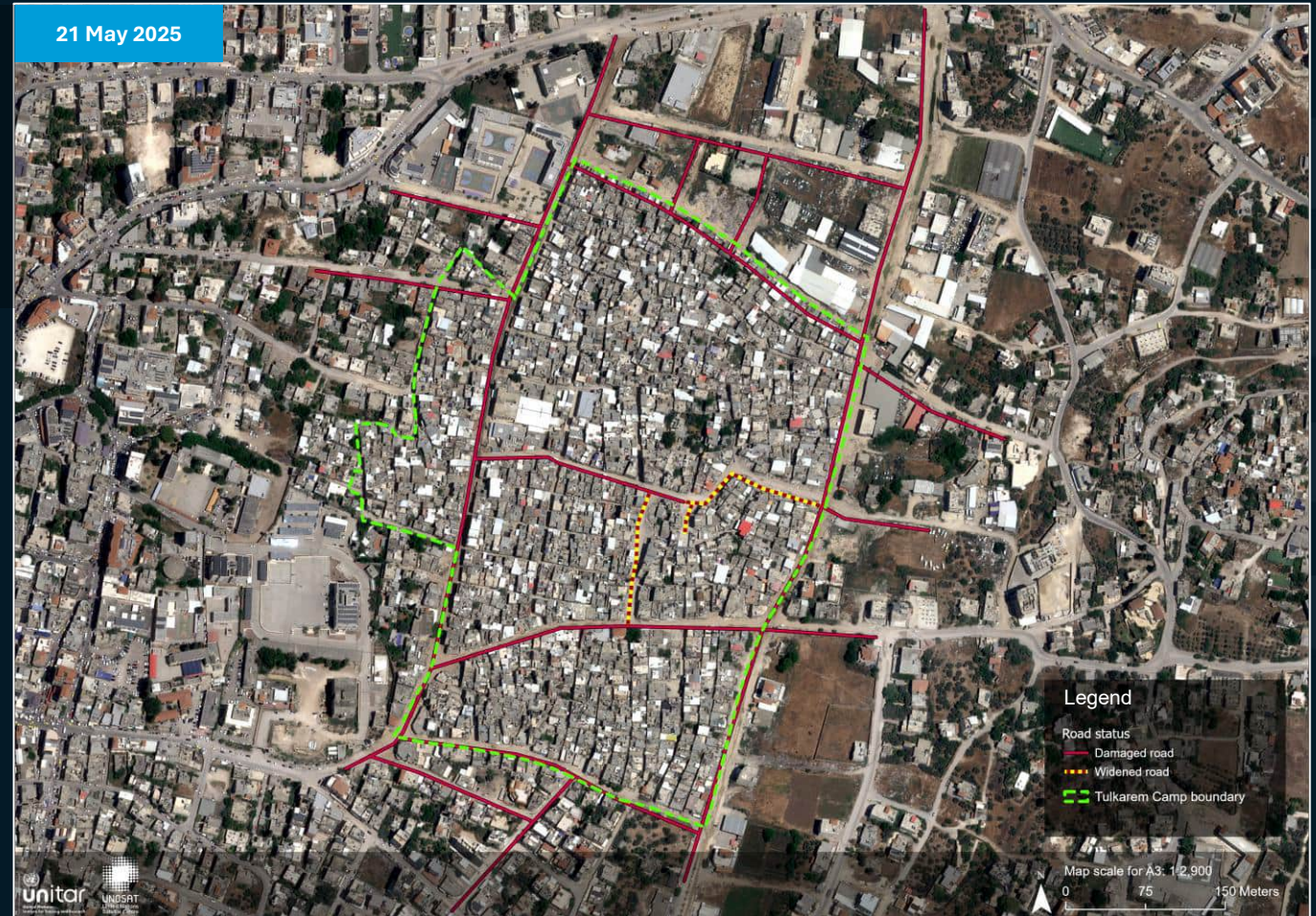


Image center: 32°18'48.6"N 35°02'07.8"E

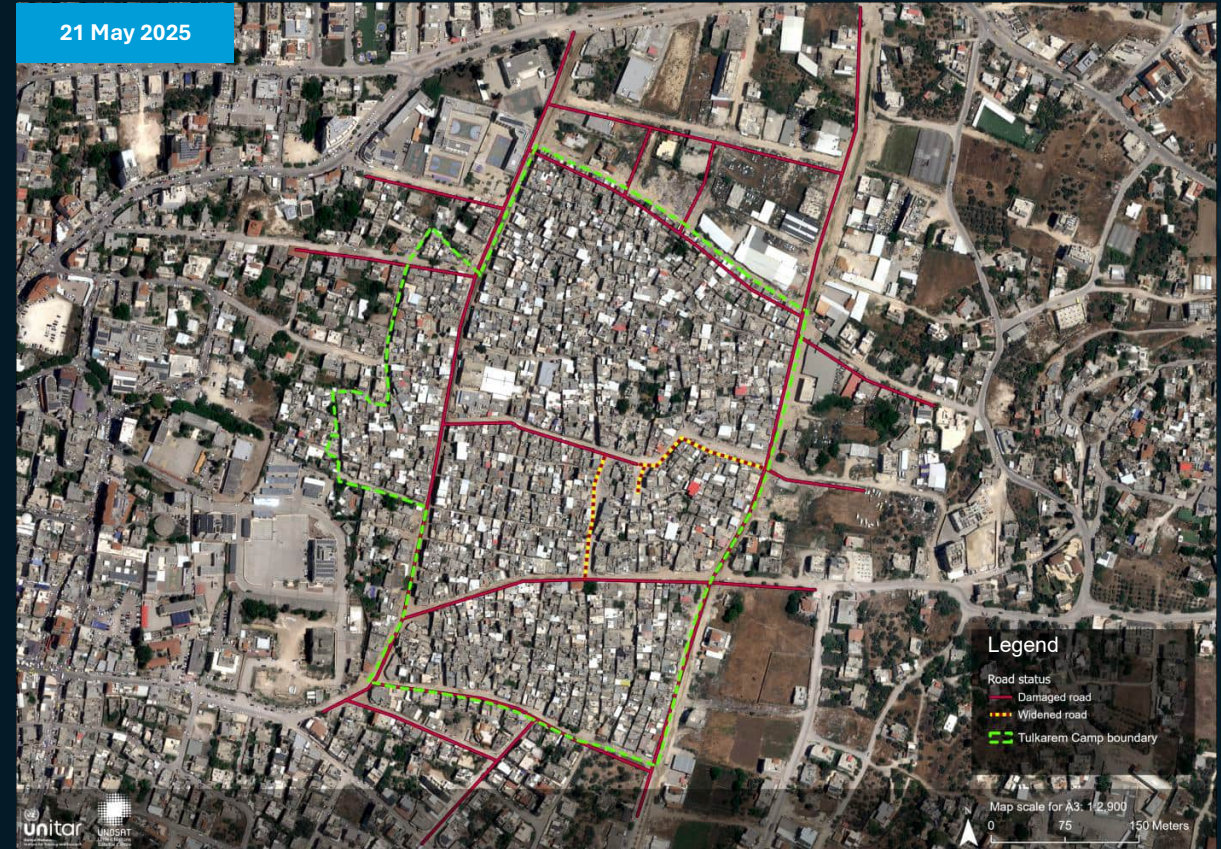
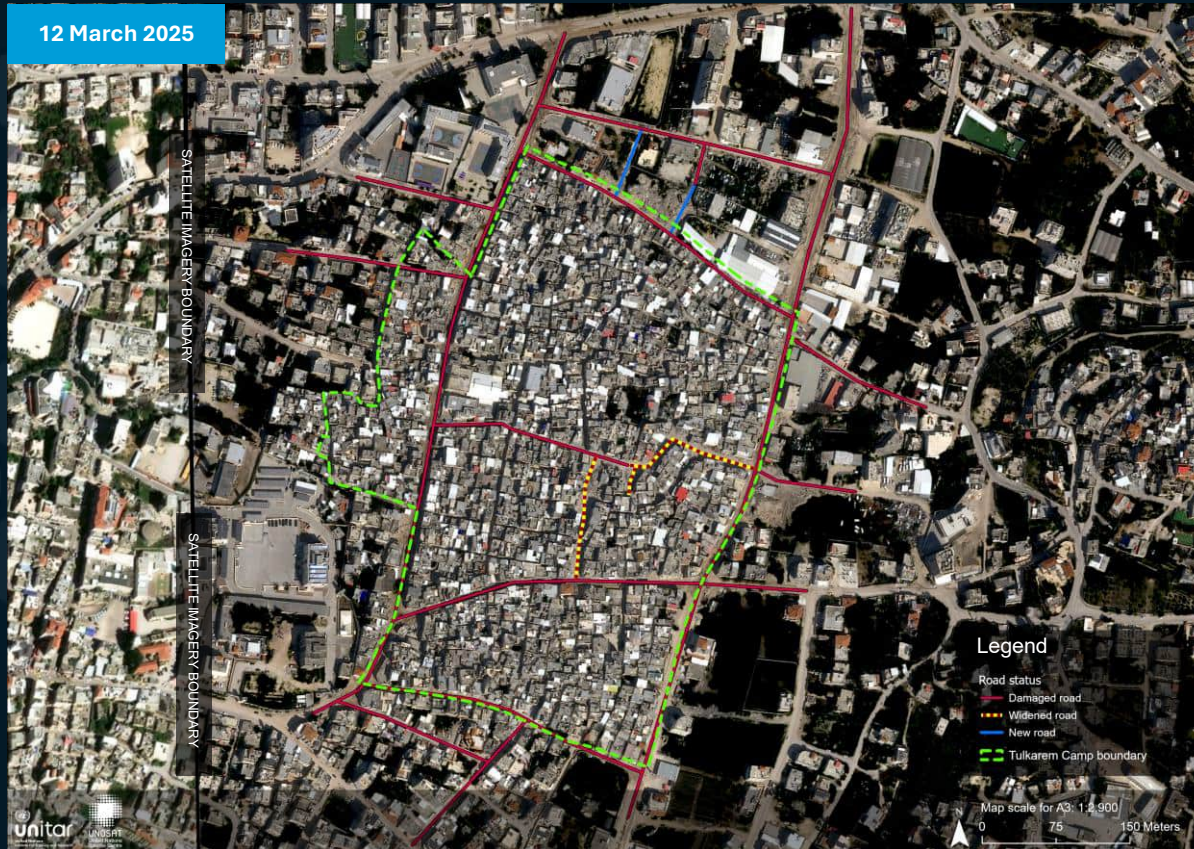
Pleiades NEO image collected on 21 May 2025

Road damage assessment Tulkarem Camp

Image center:
32°18'48.6"N
35°02'07.8"E



No change was observed



UNOSAT acquired two Pleiades NEO satellite images of Tulkarem Camp, Tulkarem Governorate, West Bank, Occupied Palestinian Territory, collected on 21 May 2025 and 12 March 2025. . As of 12 March 2025, sections of roads in the vicinity of Tulkarem Camp appeared damaged or widened, making the vehicular access for civilian vehicles extremely difficult or even impossible. Along the widened roads, buildings appeared damaged or destroyed. As of 21 May 2025, when compared to 12 March 2025, no new damaged road was observed.

SECURITY ASSESSMENT



UNOSAT conducted a satellite imagery-based comprehensive damage assessment within the perimeter of the following refugee camps, in the West Bank, Occupied Palestinian Territory:

- Tulkarem Camp, Tulkarem Governorate.
- Nur Shams Camp, Tulkarem Governorate.
- Jenin Camp, Jenin Governorate.

This report highlights a security analysis. The Security analysis shows military activities visible on imagery, such as the presence of military vehicles, roadblocks and berms on the roads blocking the roads access. Among the military vehicles the presence of military trucks, armored vehicles, bulldozers, and excavators were observed in the vicinity of certain camps.

UNOSAT acquired satellite images collected on 21 May 2025, on 12 March 2025, on 21 October 2023, and 17 June 2023. These images were then used for comparison and to detect changes within the areas of interest.



Qassam Muaddi/Mondoweiss, March 2025



Xinhua, 02 September 2024

Security assessment Jenin Camp



This map illustrates a UNOSAT satellite imagery-based security assessment of Jenin Camp, Jenin Governorate, West Bank, Occupied Palestinian Territory, based on images collected on 21 May 2025 when compared to an image collected on 12 March 2025.

According to the satellite imagery analysis, UNOSAT identified 23 berms and 6 roadblocks surrounding the camp and blocking the civilian vehicular access to the camp, these berms are mainly located on damaged road sections. A total of 5 military construction vehicles, 5 military trucks and one 1 possible armoured vehicle were overserved outside the camp area.

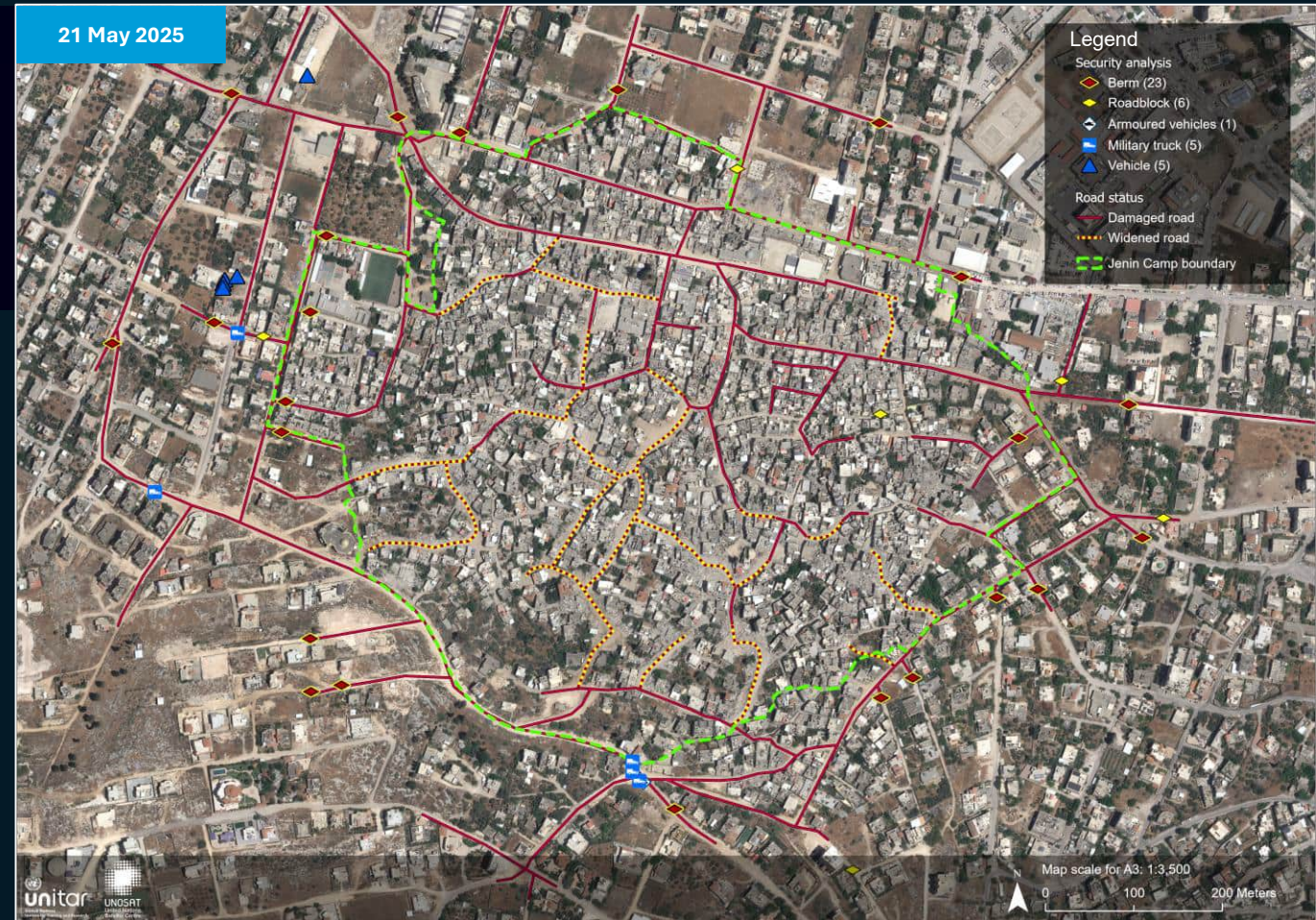
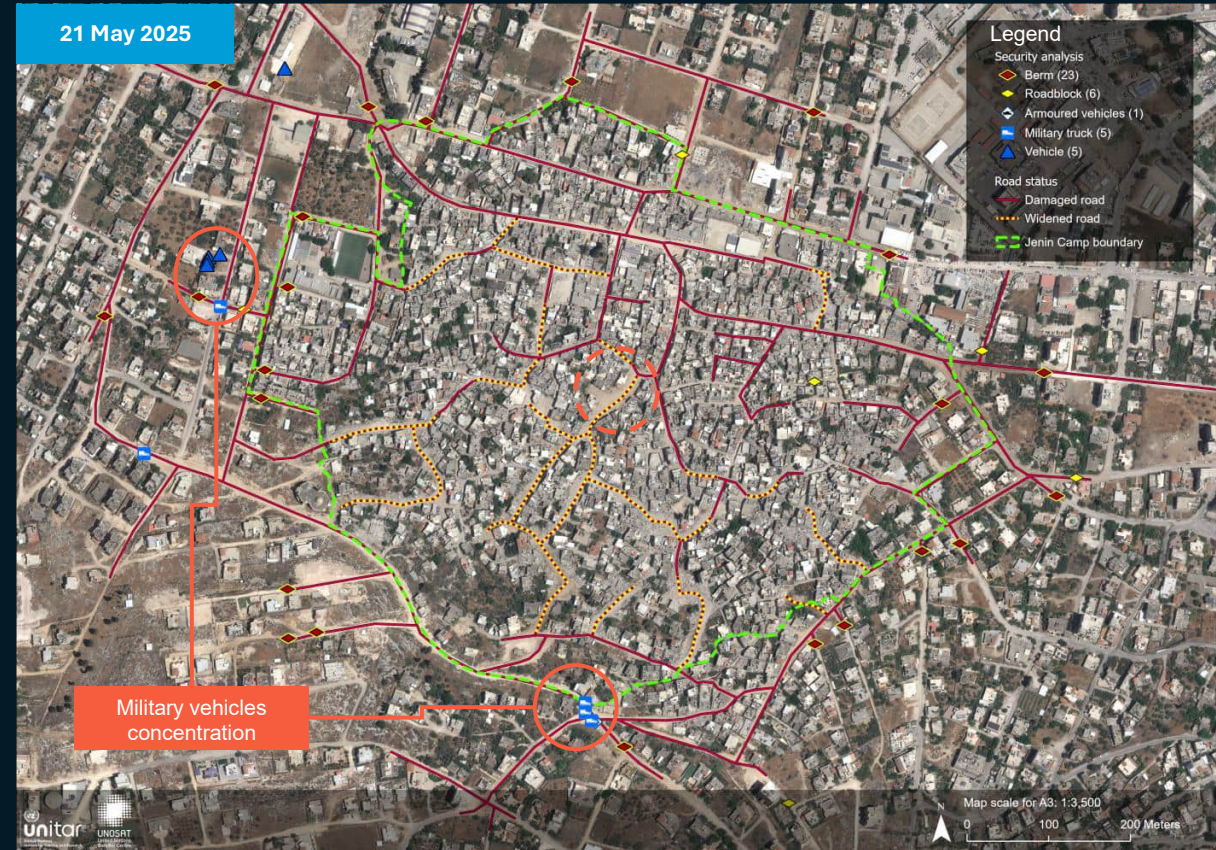
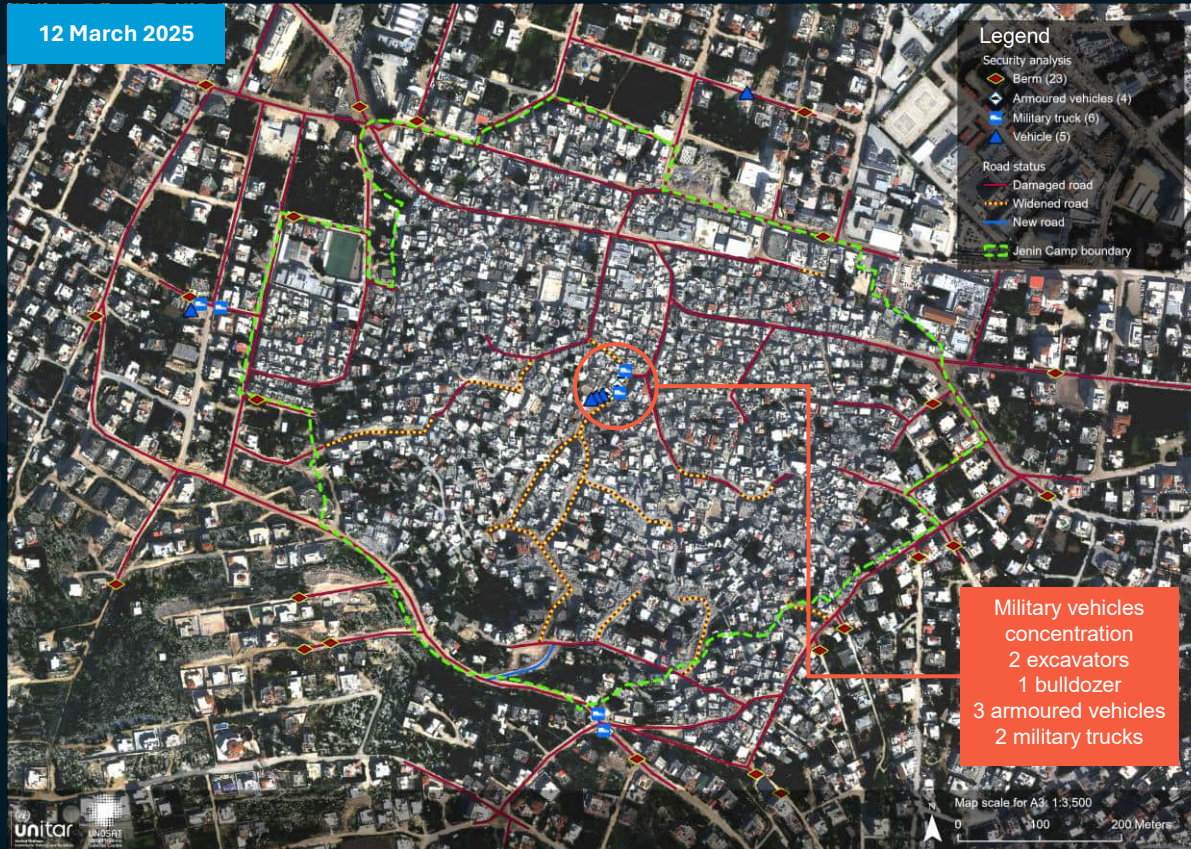


Image center: 32°27'37.2"N 35°17'16.0"E

Pleiades NEO image captured on 21 May 2025

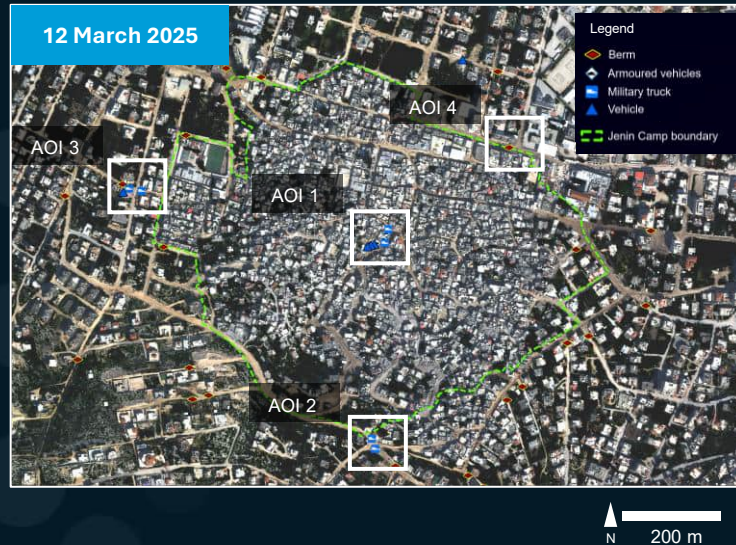
Security assessment Jenin Camp

Image center:
32°27'37.2"N
35°17'16.0"E

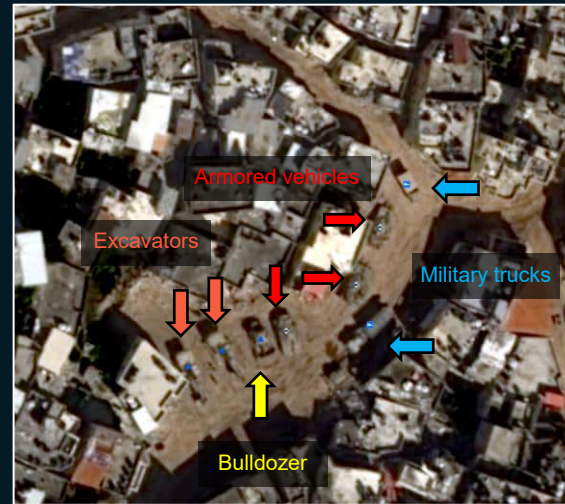


UNOSAT acquired two Pleiades NEO satellite images of Jenin Camp, Jenin Governorate, West Bank, Occupied Palestinian Territory, collected on 21 May 2025 and 12 March 2025. As of 12 March 2025, military vehicles concentrated on damaged roads were overserved in the centre of the camp, with 2 excavators, 1 bulldozer, 3 armoured vehicles, and 2 military trucks. As of 21 May 2025, military vehicles were observed near the camp – see slides 23 and 24 for a detailed description.

Security assessment Jenin Camp – 12 March 2025



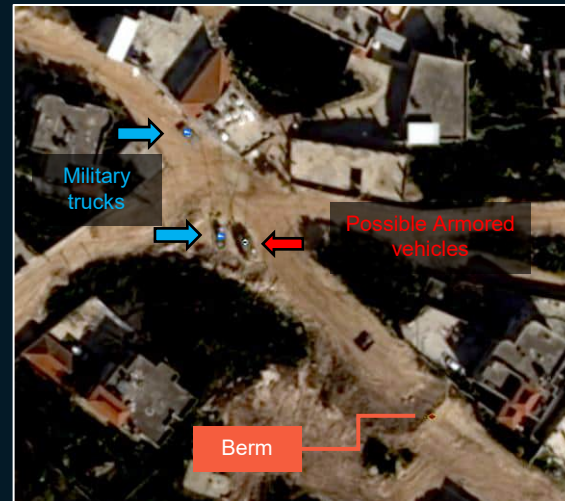
AOI 1



AOI 3



AOI 2



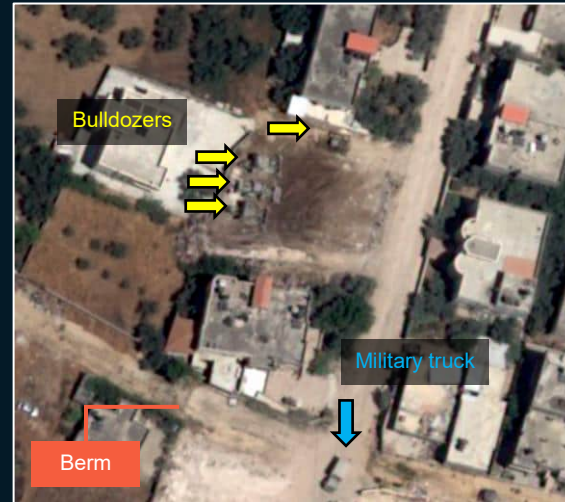
AOI 4



Security assessment Jenin Camp – 21 May 2025



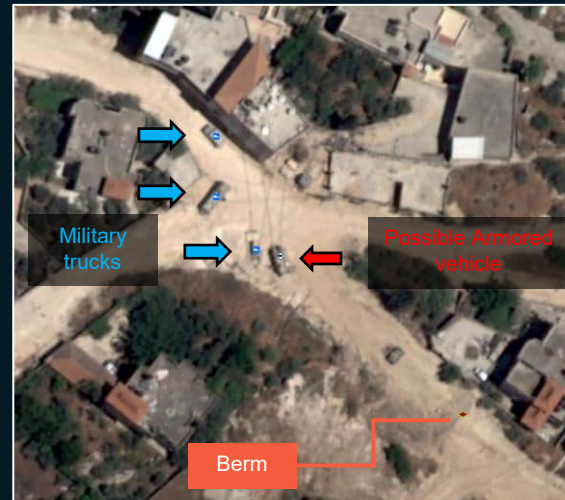
AOI 1



AOI 3



AOI 2



AOI 4



Security assessment Nur Shams Camp

This map illustrates a UNOSAT satellite imagery-based security assessment of Nur Shams Camp, Tulkarem Governorate, West Bank, Occupied Palestinian Territory, based on images collected on 21 May 2025 when compared to an image collected on 12 March 2025.

According to the satellite imagery analysis, UNOSAT identified 1 breached berm, 1 military truck and 1 excavator on the main damaged road crossing the Nur Shams Camp.

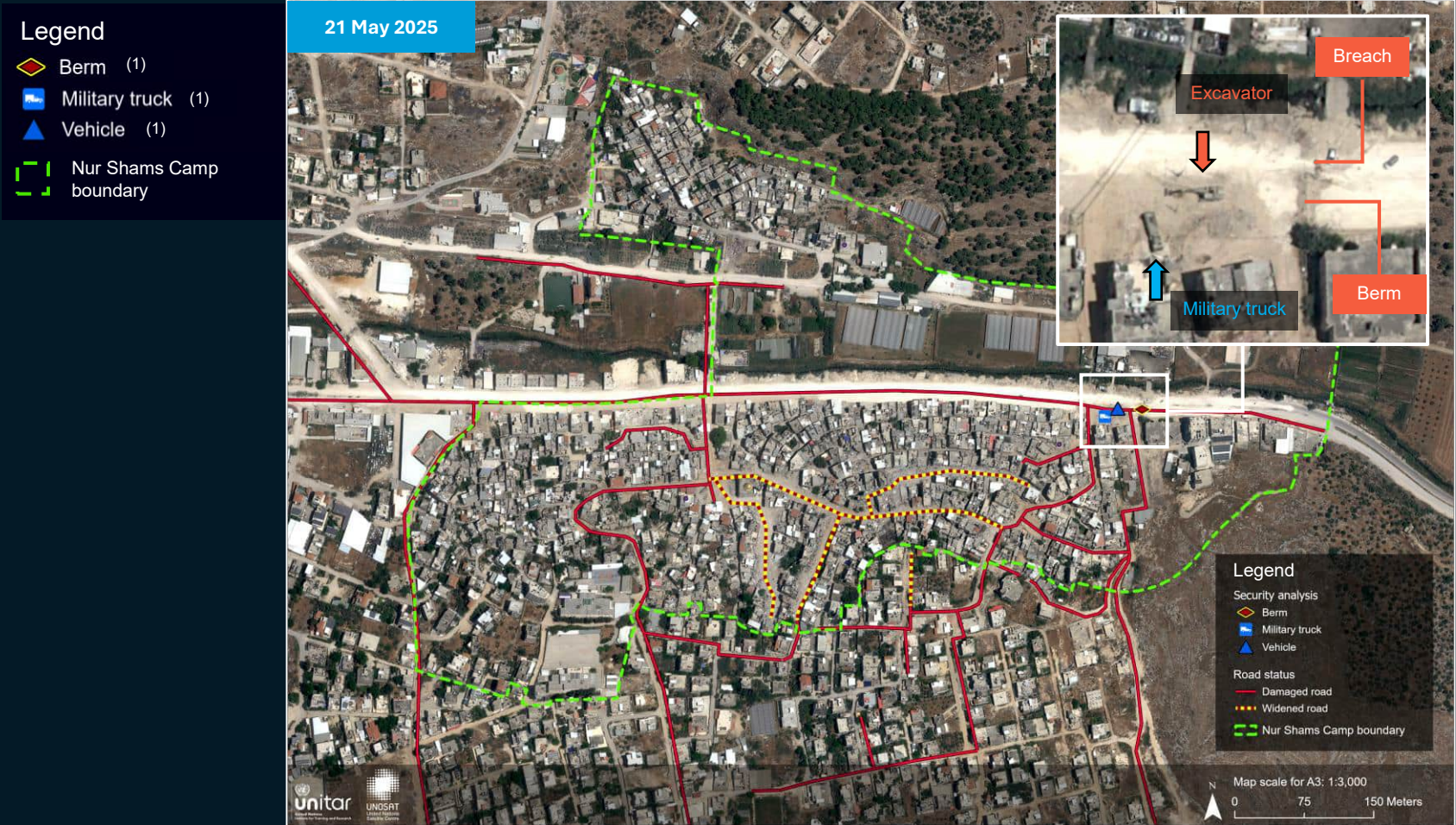


Image center: 32°19'08.7"N 35°03'39.0"E

Pleiades NEO image captured on 21 May 2025

Security assessment Tulkarem Camp

This map illustrates a UNOSAT satellite imagery-based security assessment of Tulkarem Camp, Tulkarem Governorate, West Bank, Occupied Palestinian Territory, based on images collected on 21 May 2025 when compared to an image collected on 12 March 2025.

According to the satellite imagery analysis, No military activity was observed on 21 May 2025 and 12 March 2025, excepted the damage on roads.

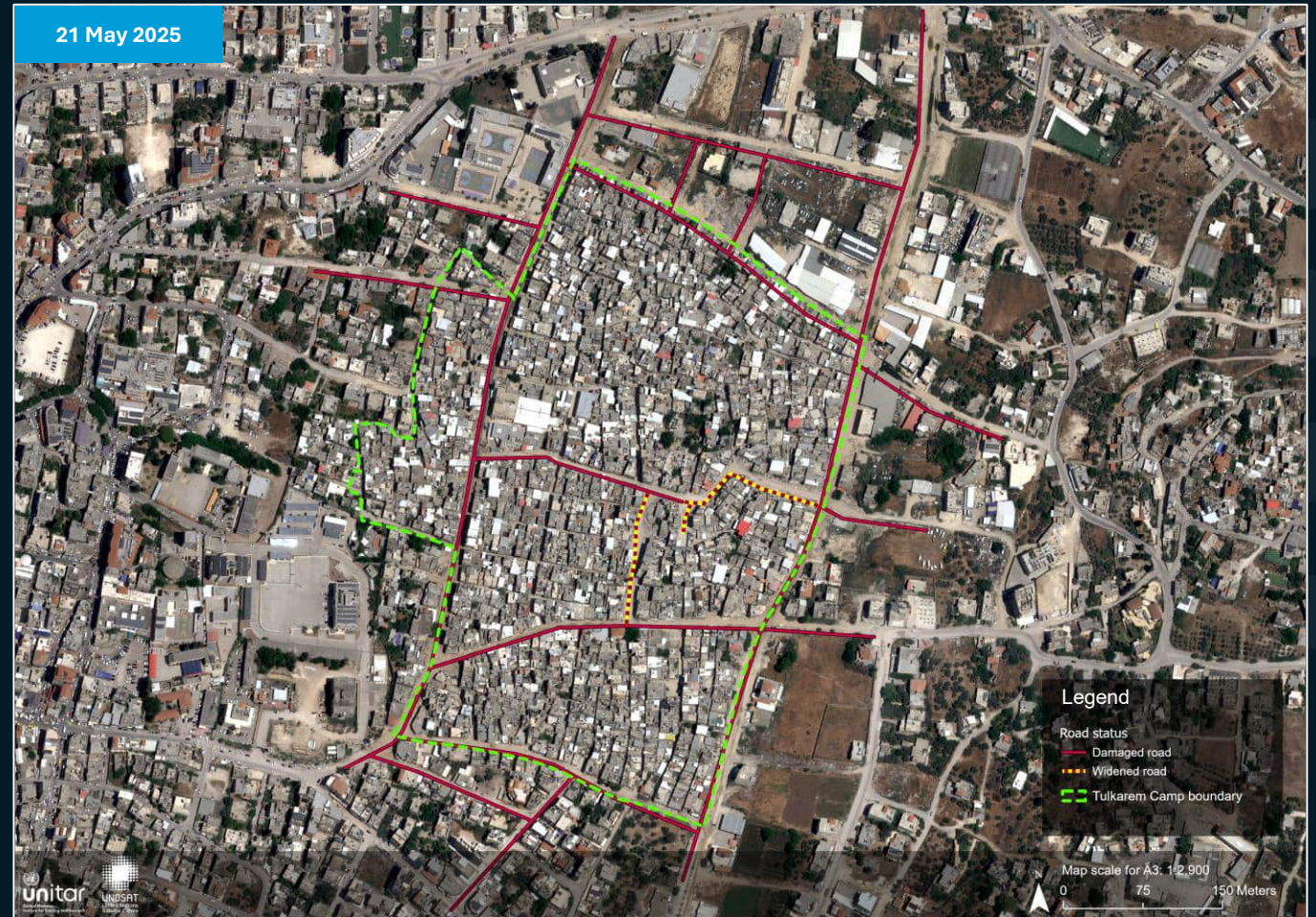


Image center: 32°18'48.6"N 35°02'07.8"E

Pleiades NEO image captured on 21 May 2025

Data sources:

(1) Satellite images

A. Satellite Imagery: WorldView-2

Imagery Date: 17.06.2023, 21.10.2023

Resolution: 50 cm

Copyright: © Maxar 2023

Note: not shown on report

B. Satellite Imagery: Pléiades-NEO

Imagery Date: 12.03.2025, 21.05.2025

Resolution: 30 cm

Copyright: CNES 2025

Source: Airbus D&S – Pléiades-NEO

(2) Ancillary data

Boundaries: OCHA OPT, PCBS

Roads: UNOSAT, UN-Habitat

Damage assessment: UNOSAT

Security analysis: UNOSAT

Analysis: United Nations Satellite Centre (UNOSAT)

Production: United Nations Satellite Centre (UNOSAT)

The designations employed and the presentation of material on this map do not imply the expression of any opinion whatsoever on the part of the Secretariat of the United Nations concerning the legal status of any country, territory, city or area or of its authorities, or concerning the delimitation of its frontiers or boundaries. The United Nations Satellite Centre - UNOSAT is not responsible for the misuse or misrepresentation of the map.



@UNOSAT



@UNOSAT



@UNITAR.unosat