

OCCUPIED PALESTINIAN TERRITORY

GAZA STRIP

IMAGERY ANALYSIS: 28 July 2025/ PUBLISHED: 29 July 2025 / V1

AREA OF INTEREST

365km²

DAMAGED CROPLAND

130km²

 **COMPLEX EMERGENCY**
CE20231007PSE

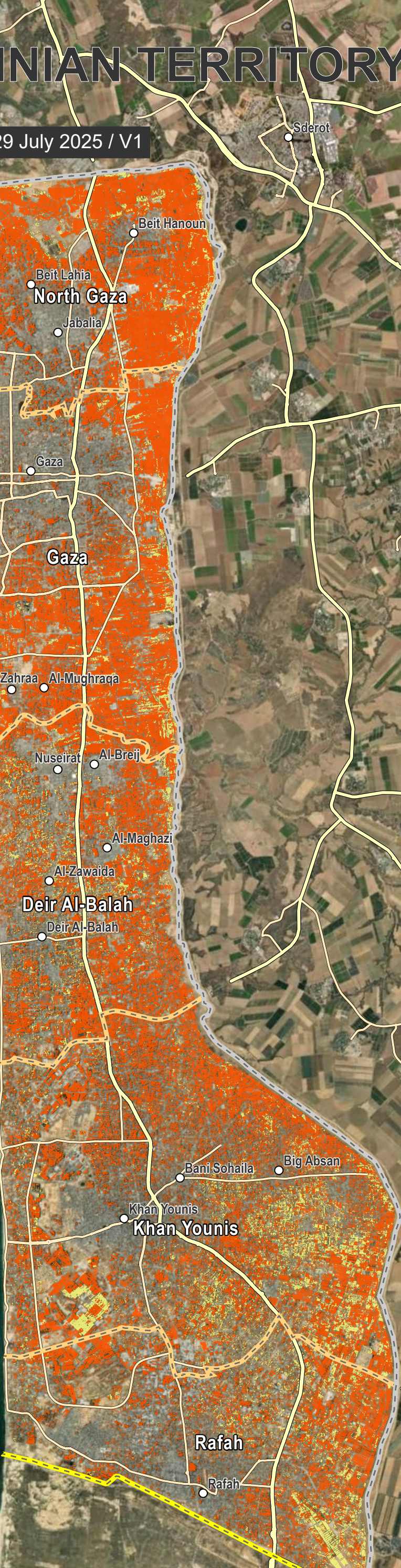
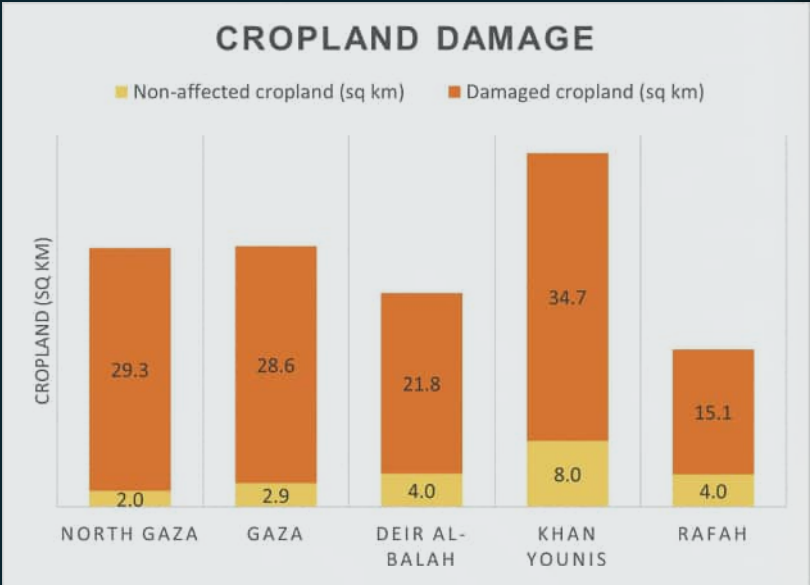


UNOSAT Damage to Cropland Overview Map

This map illustrates satellite-detected changes in cropland areas of the Gaza Strip resulting from the decline in the health and density of crops due to the ongoing conflict. UNOSAT conducted an analysis utilising satellite imagery collected by the Sentinel-2 satellite between July 2017 and 2025, performing a Normalised Difference Vegetation Index (NDVI) analysis as well as a multi-temporal classification to identify notable changes taking place in cropland areas during that timeframe. The methodology evaluated the damage as a decline in the health and density of crops in July 2025, in comparison to the preceding six seasons spanning from 2017 to 2025. The decline in the health and density of the crops can be observed due to the impact of activities such as razing, heavy vehicle activity, bombing, shelling, and other conflict-related dynamics. The analysis includes damage assessment for orchards and other trees, field crops and vegetables. UNOSAT and FAO analysis shows that the cropland extent in the Gaza Strip is estimated to be 150 sq. km, accounting for approximately 41% of the total area of the Gaza Strip, following an extensive land-cover analysis.

Compared to the average of the previous seven years, approximately 86% of the permanent crop fields in the Gaza Strip exhibited a significant decline in health and density in July 2024. In a comprehensive evaluation, it was found that there has been an 3% increase in the proportion of cropland that has been damaged since the previous analysis conducted in April 2024. Additionally, the analysis indicates a notable rise in the destruction of the orchards and other trees, field crops and vegetables in the Khan Younis Governorate, with a 4-percentage point increase compared to the previous April 2024 analysis. Moreover, there has been a notable escalation in the destruction of cropland within the North Gaza Governorate, with the percentage rising from 91% in April 2024 to 94% in July 2025. This is a preliminary analysis and has not yet been validated in the field.

Governorate	Non-affected cropland (sq km)		Damaged cropland (sq km)		Total area of cropland (sq km)
North Gaza	2.0	6%	29.3	94%	31.3
Gaza	2.9	9%	28.6	91%	31.5
Deir Al-Balah	4.0	16%	21.8	84%	25.9
Khan Younis	8.0	19%	34.7	81%	42.8
Rafah	4.0	21%	15.1	79%	19.0
Total	20.9		129.6		150.5



Damaged cropland

Non-affected cropland

Populated place

Primary road

Secondary road

Armistice Demarcation Line

Governorate boundary

International boundary

The boundaries and names shown and the designations used on this map do not imply official endorsement or acceptance by the United Nations.