

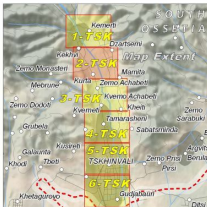
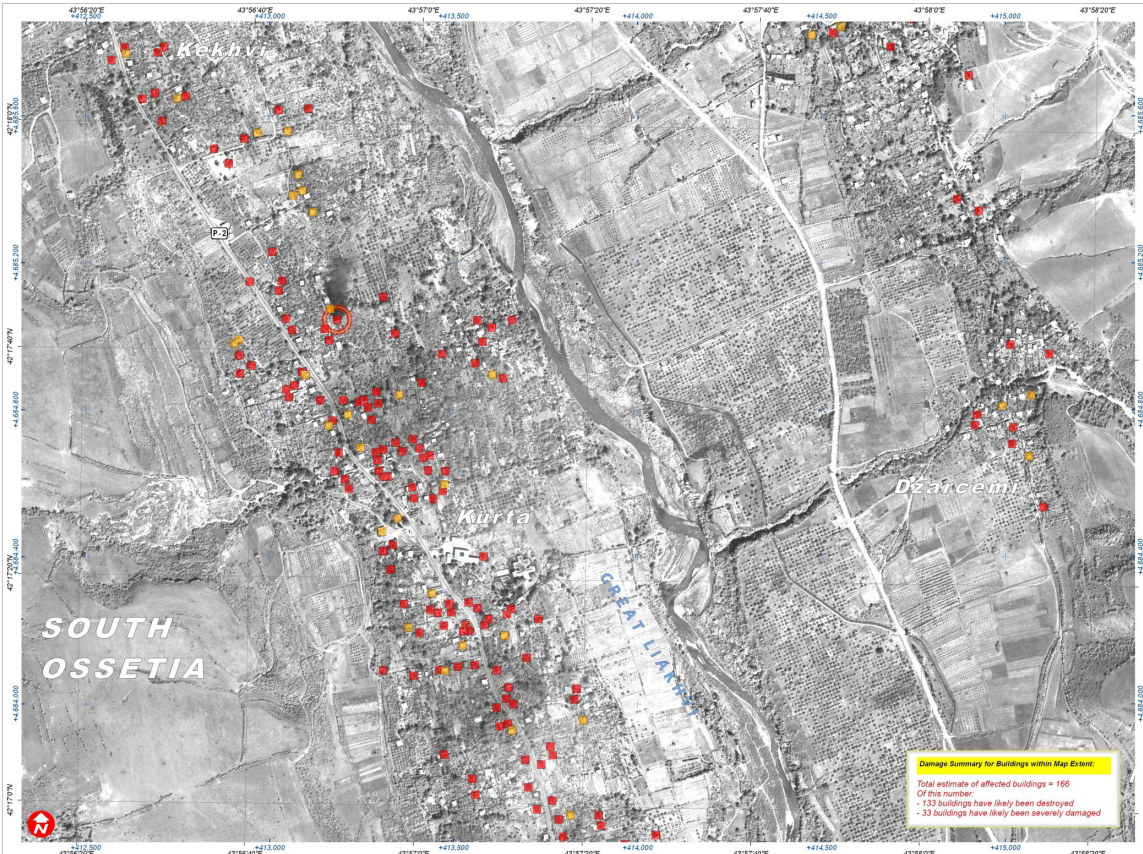
VILLAGE DAMAGE ATLAS: FROM KEKHVI TO TSKHINVALI, SOUTH OSSETIA, GEORGIA

Damage Assessment with WorldView-1 & Formosat-2 Satellite Imagery Recorded on 19 August 2008

This atlas map presents a satellite-based damage described in the damage summary box below. Affected assessment for the affected areas between Kekhvi and buildings have been classified either as destroyed or severely damaged. An important preliminary finding of this conflict between Georgian and Russian military forces in satellite damage analysis is the observed heavy August 2008. Damaged buildings have been identified with concentration of damage within clearly defined residential WorldView-1 and Formosat-2 satellite imagery acquired on areas. Please note, this is an initial damage assessment 19 August 2008. The estimated number of affected and has not yet been independently validated on the buildings within the mapped extent of this sheet is ground. Please send additional comments to UNOSAT.

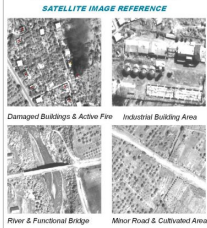


Fire & Armed Conflict 26 August 2008
ATLAS SHEET: 2-TSK



Map Legend

- Approximate South Ossetia Boundary
- SATELLITE DAMAGE ASSESSMENT**
- Building Likely Destroyed
- Building Likely Damaged
- Building on fire during sat image acquisition



Damage Summary for Buildings within Map Extent

Total estimate of affected buildings = 166
 Of this number:
 - 133 buildings have likely been destroyed
 - 33 buildings have likely been severely damaged

Map Scale for A3: 1:9,250

0 20 40 60 80 100 120 140 160 180 200 220 240 260 280 300 meters

Satellite Data WorldView-1
 Resolution 50 cm
 Imagery Date 19 August 2008
 Copyright Digital Globe (2008)
 Source U.S. Department of State - HIU
 Access Rules NextView "EULA" - 2008
 Additional Imagery Formosat-2 (China partnership)
 Imagery Copyright NSPO 2008
 Imagery Date 19 August 2008
 GIS Data USGS, UNEP, UNOSAT
 Damage Analysis UNOSAT
 Projection Pulkovo 1995 GK Zone 8N
 Datum Pulkovo 1995

The depiction and use of boundaries, geographic names and related data shown here are not guaranteed to be accurate nor do they imply official endorsement or acceptance by the United Nations. This map was produced by the United Nations Satellite Centre, Geneva, and distributed by the Operational Satellite Applications Programme (UNOSAT). UNOSAT provides satellite imagery & analysis products, information & UN humanitarian & development agencies & their implementing partners.

UNOSAT

satellite solutions for all

Contact information: info@unosat.org
 24/7 Hotline: +41 74 41 42 4998
www.unosat.org