

OVERVIEW OF VILLAGE DAMAGE ATLAS: KEKHVI TO TSKHINVALI, SOUTH OSSETIA, GEORGIA

Damage Assessment with WorldView-1 & Formosat-2 Satellite Imagery Recorded on 19 August 2008

**Hyperlinked
Map Sheets**

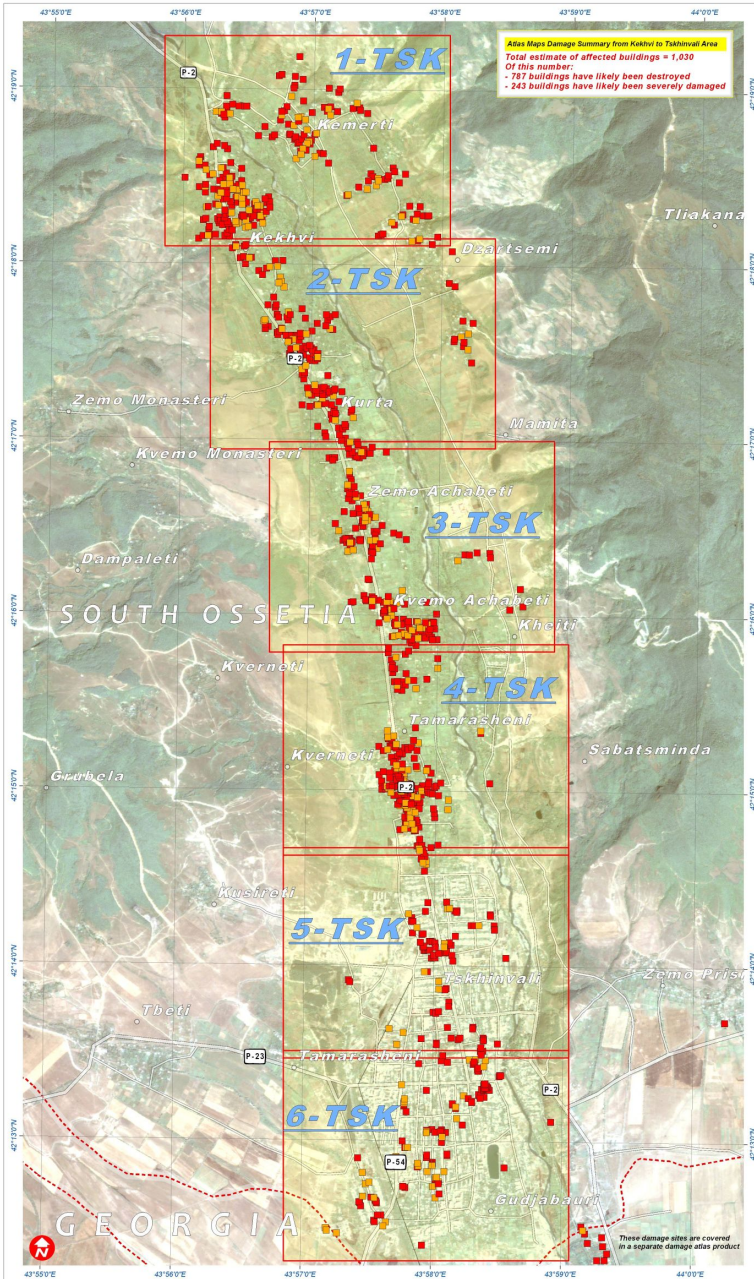
(Move PDF cursor over the desired atlas map sheet)

Fire & Armed Conflict 26 August 2008

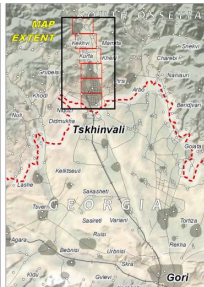


Version 1.0

UNOSAT-2008-000147



Atlas Maps Damage Summary from Kekhvi to Tskhinvali Area
 Total estimate of affected buildings = 1,030
 Of this number:
 - 787 buildings have likely been destroyed
 - 243 buildings have likely been severely damaged



Analysis Description

This atlas overview presents a satellite-based damage assessment for the affected area between Kekhvi and Tskhinvali, South Ossetia, Georgia following the armed conflict between Georgian and Russian military forces, August 2008. Damaged buildings have been identified with WorldView-1 & Formosat-2 satellite imagery acquired on 19 August 2008. Affected buildings have been classified either as destroyed or severely damaged by image interpretation methods. Destroyed buildings were defined either by the total collapse of the structure or where it was standing but with less than 50% of the roof still intact. Severely damaged buildings were defined as having visible structural damage to a limited portion of one wall or where a portion of the roof was damaged but with more than 50% of the roof still intact.

The estimated number of affected buildings within the mapped extent of each atlas sheet is described in a damage summary box. The damage total number of affected buildings for the whole of the atlas series is 1,030. Of this total 787 buildings have likely been destroyed and 243 buildings have likely been severely damaged. Also marked within the atlas are buildings which were visibly burning when the satellite image was recorded on 19 August 2008.

An important preliminary finding of this satellite damage analysis is the observed heavy concentration of damages within clearly defined residential areas.

Each atlas map sheet shown in this overview is hyperlinked either to the individual maps on-line or within the PDF document. Atlas map sheets have been produced at a scale of 1:9,250 for A3 printing. Please note, this is an initial damage assessment and has not yet been independently validated on the ground. Please send any additions or corrections to UNOSAT at info@unosat.org or call the 24/7 Hotline: +41 76 487 4998.

Map Legend

Transport Pts **Transport Lines**

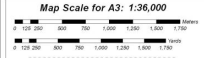
- ✈ Airport
- ⚓ Port
- Main Road
- Secondary Road
- Railroad

Administrative

- International Border
- ***** Approximate South Ossetia Boundary

SATELLITE DAMAGE ASSESSMENT

- Building Likely Destroyed
- Building Likely Severely Damaged



Satellite Data	WorldView-1
Resolution	50 cm
Imagery Date	19 August 2008
Copyright	Digital Globe (2008)
Source	U.S. Department of State - HSI
Access Rules	NextView "ESLA" - 2008
Additional Imagery	Formosat-2 (Chir pushoverpass)
Imagery Copyright	NPO 2008
Imagery Date	19 August 2008
File Data	MOCS Aqua - Terra (NASA)
File Processing	U. of Maryland, NASA
File Dates	7 - 22 August 2008
GIS Data	USC&I, UNOSAT
Damage Analysis	UNOSAT
Projection	ProjWGS 1995 GK Zone 3N Datum 1995

The depiction and use of boundaries, geographic names and related data shown here are not guaranteed to be error-free nor do they imply official endorsement or acceptance by United Nations. This atlas was produced by the United Nations Institute for Training and Research (UNITAR) Operational Satellite Applications Program (UNOSAT). UNOSAT provides satellite imagery & related geographic information to UN humanitarian & development agencies & their implementing partners.

UNOSAT
 satellite solutions for all
 Contact Information: info@unosat.org
 24/7 Hotline: +41 76 487 4998
 www.unosat.org