

DAMAGE ASSESSMENT OF ALEPPO, ALEPPO GOVERNORATE, SYRIA

Analysis with WorldView-2 Data Acquired 23 May 2014, 23 September 2013 and 21 November 2010

This map illustrates satellite-detected damage and destruction in a portion of the city of Aleppo, Aleppo Governorate, Syria. Using satellite imagery acquired 23 May 2014, 23 September 2013, and 21 November 2010, UNITAR / UNOSAT identified a total of 3,875 affected structures within the area of this map. Approximately 630 of these were destroyed, 2,127 severely damaged, and 1,118 moderately damaged. The city-wide analysis of Aleppo revealed a total of 8,510 affected structures, of which 1,543 were

destroyed, 4,847 severely damaged, and 2,120 moderately damaged. While much of the city was damaged by 23 September 2013, 7,937 structures were newly damaged and 17 structures experienced an increase in damage between that date and 23 May 2014. This analysis was done of the REACH initiative for the U.S. Office of Foreign Disaster Assistance. This is a preliminary analysis and has not yet been validated in the field. Please send ground feedback to UNITAR / UNOSAT.

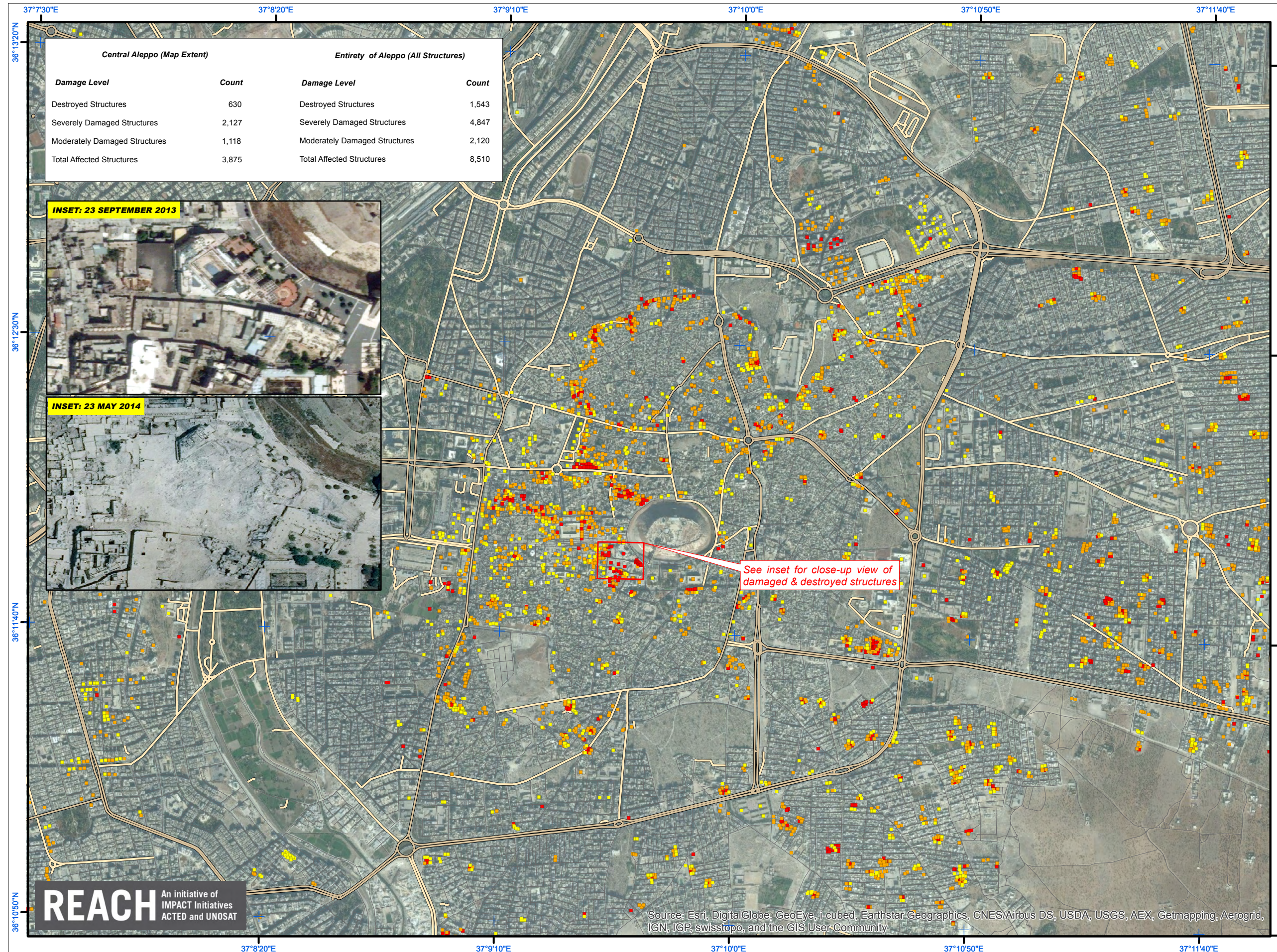
Complex Emergency



Production Date: 11/6/2014

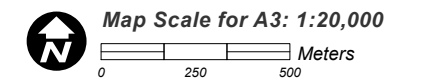
Version 1.0

Activation Number: CE20130604SYR



LEGEND

- Destroyed Structure
- Severely Damaged Structure
- Moderately Damaged Structure
- Highway / Primary Road
- Secondary Road
- Local / Urban Road



Satellite Data: WorldView-2
 Imagery Dates: 23 May 2014, 23 September 2013, 21 November 2010
 Resolution: 50 cm
 Copyright: DigitalGlobe
 Sources: European Space Imaging, US Department of State, Humanitarian Information Unit, NextView License
 Road Data: Google Map Maker / OSM / ESRI
 Other Data: USGS, UNCS, NASA, NGA
 Analysis: UNITAR / UNOSAT
 Production: UNITAR / UNOSAT
 Analysis conducted with ArcGIS v10.2

Coordinate System: WGS 1984 UTM Zone 37N
 Projection: Transverse Mercator
 Datum: WGS 1984
 Units: Meter

The depiction and use of boundaries, geographic names and related data shown here are not warranted to be error-free nor do they imply official endorsement or acceptance by the United Nations. UNOSAT is a program of the United Nations Institute for Training and Research (UNITAR), providing satellite imagery and related geographic information, research and analysis to UN humanitarian and development agencies and their implementing partners.

This work by UNITAR/UNOSAT is licensed under a Creative Commons Attribution-NonCommercial-



UNOSAT

Contact Information: unosat@unitar.org
 24/7 Hotline: +41 76 487 4998
www.unitar.org/unosat

REACH An initiative of IMPACT Initiatives ACTED and UNOSAT

Source: Esri, DigitalGlobe, GeoEye, i-cubed, Earthstar Geographics, CNES/Airbus DS, USDA, USGS, AEX, Getmapping, Aerogrid, IGN, IGP, swisstopo, and the GIS User-Community